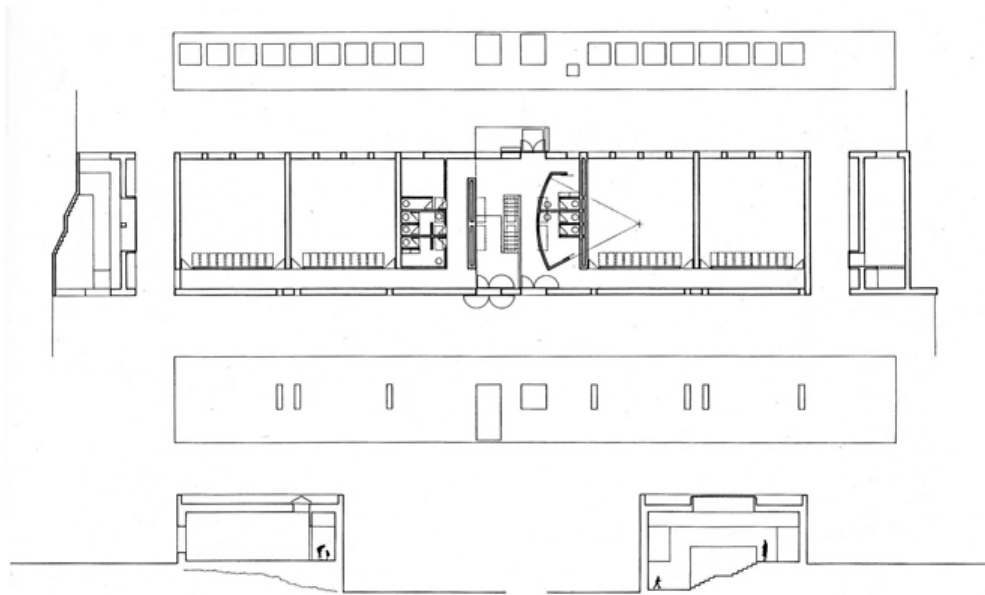
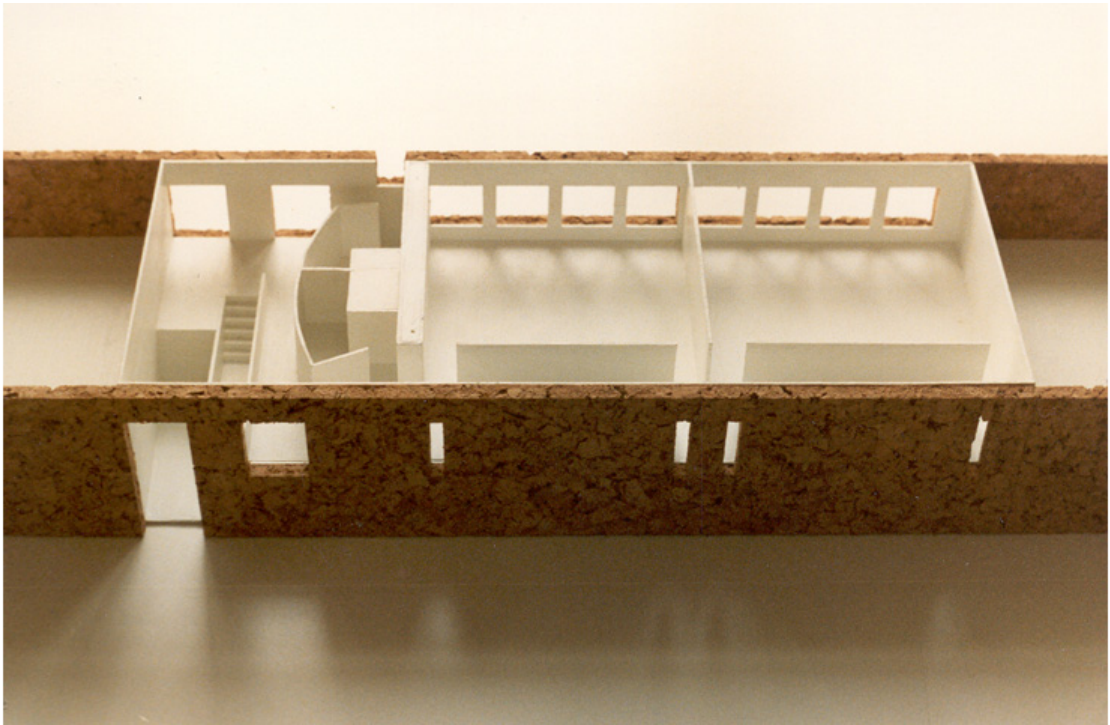


# CLASSROOM BUILDING I, LOECHES, MADRID (1989)





The town of Loeches rises on hill, dominating the open landscape of surrounding fields. There, above, between two large constructions, two 17th century churches and convents, a school had unfortunately been built, a totally out-of-place element. The problem was resolved by creating a wall building with the same stone as the enclosing convent walls, capable of covering the first, and in decided continuity with the historical condition.

The program is developed between two walls. The northern facade silently appears as yet another fence wall, and the classrooms open to the south, to the sunlight. In the hall, which absorbs the site's sectional changes, the landscape is framed by two large window openings. The corridor is illuminated by light from the classroom skylights as it passes through the glassblock interior divisions.

The intentions of the project are realized, a profound relationship with the context is established and a lost order is recuperated.

*Spanish version >*

*La villa de Loeches se alza sobre una colina que domina el amplio paisaje llano circundante. Allá arriba, entre dos grandes edificaciones, iglesias convento del siglo XVII, se habían construido unas desafortunadas escuelas que aparecían como un elemento extraño. Se resolvió el problema creando una edificación-muro con la misma piedra que las tapias de los conventos, capaz de tapar lo anterior y en decidida continuidad con la situación decantada por la Historia.*

*El programa se desarrolla entre muros. La fachada norte aparece silenciosa como una tapia más, y las aulas se abren a sur, a la luz del sol. En el vestíbulo, que recoge con un cambio de niveles la pendiente del terreno, se enmarca el paisaje a través de dos grandes huecos. El pasillo se ilumina a través de los tabiques de pavés con la luz de los lucernarios del interior de las aulas.*

*Se ha conseguido el objetivo de partida de profundo entendimiento del lugar y de recuperación del orden anteriormente perdido.*