



DEPARTMENTS

Emerging Technologies

Erratum:

Improving the Presentation of Results of Logistic Regression with R.

In the Emerging Technologies section of the January 2005 issue, *ESA Bulletin* (Volume 85, No. 1, p. 42), the article, “Improving the presentation of the results of logistic regression with R,” contained an incorrect version of Fig. 3, “Fitted logistic Gaussian regression curve” The correct version appears below.

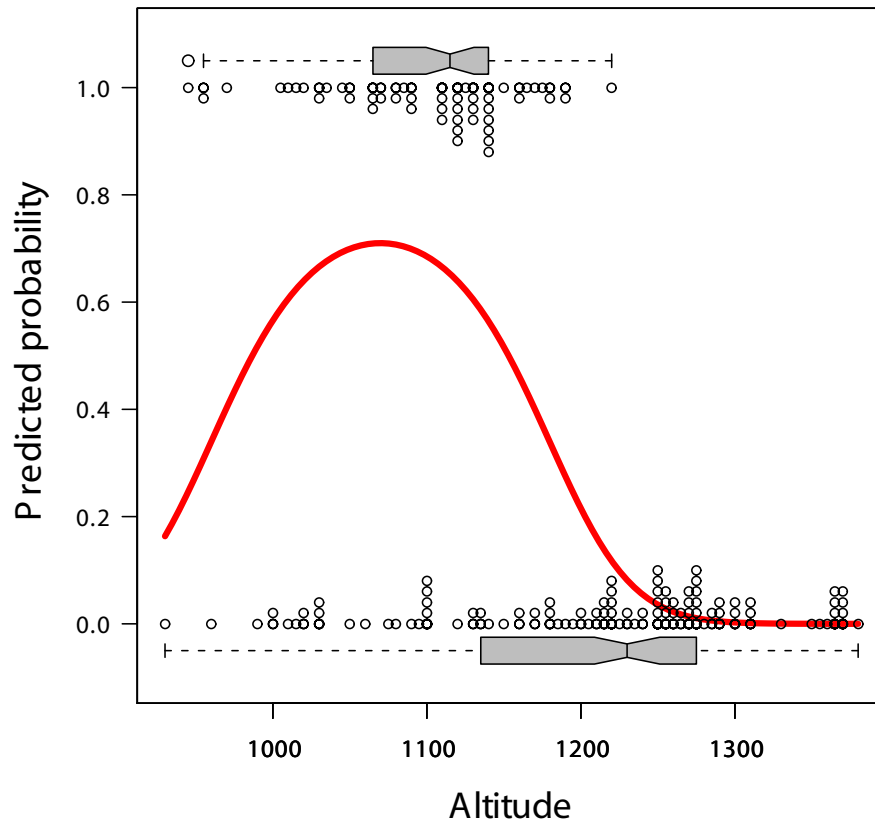


Fig. 3. Fitted logistic Gaussian regression curve with dit plots and box plots of dependent variable categories.