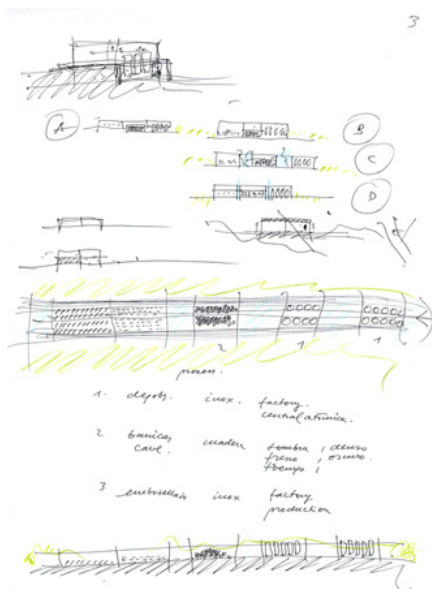
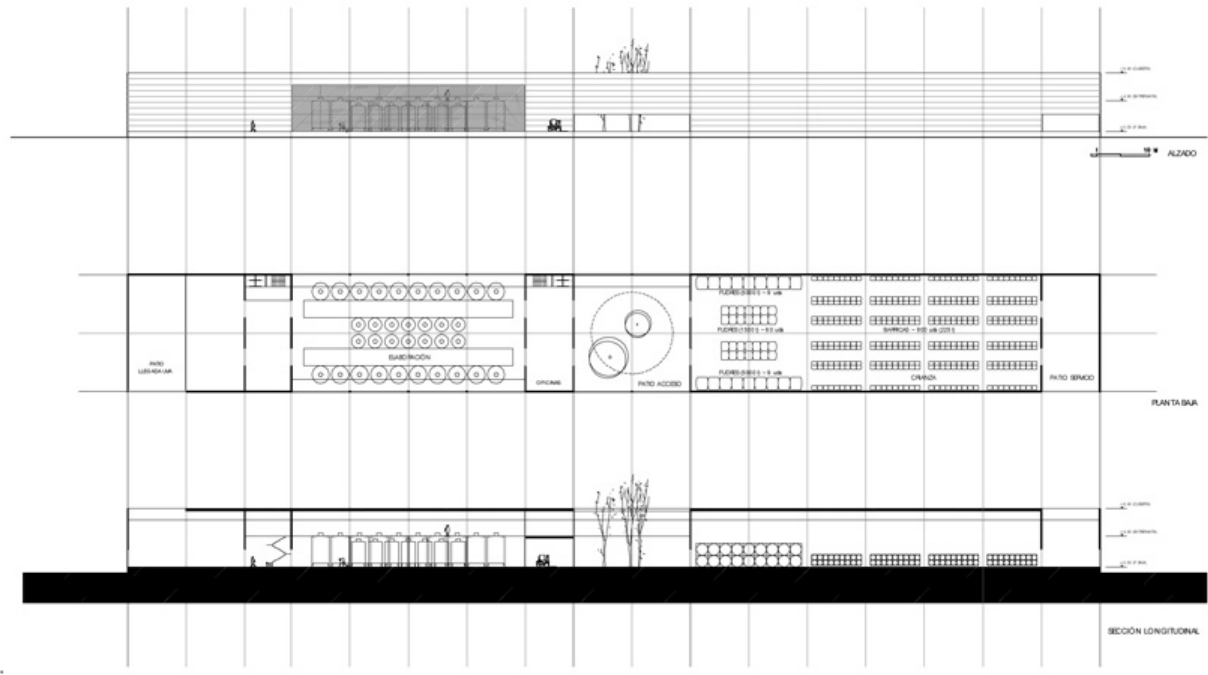
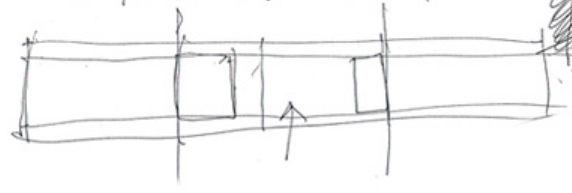
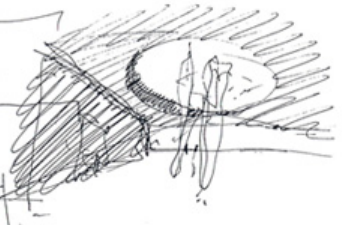
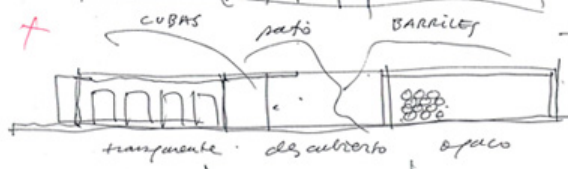
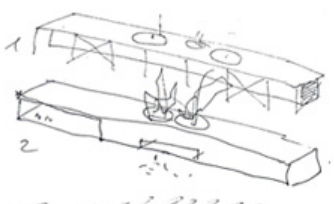
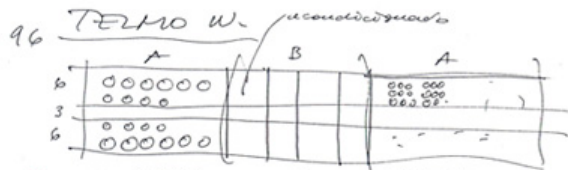


# WINERY





Given the proliferation of arbitrary forms in winery architecture in recent years, we propose the simplest form: a simple elongated metal box that sits on the ground like an artifact, like a machine.

We distinguish two zones clearly: that of the wine production, the winery properly speaking, and that of the mechanization and bottling.

For the winery, we created a well-insulated and very inert box, with all of the different conditions that this space requires for the optimal fermentation of the fruit in its casks. This space has a very clear circulation diagram.

We created a very transparent box that acts as a huge display window for the elaboration and bottling area, in this way its state of the art machinery of great visual interest may be seen.

Between the two areas, a principal entrance courtyard unites the two, at the same time separating them. The upper floor of the elaboration zone is presided over the offices that act as a control bridge, open also to the courtyard. The other side is a service space.

The entire complex is flanked by two end courtyards that serve various functions. Outside, the building looks like a large metal box, as if it were a piece of large machinery. The walls and roof are resolved with a continuous skin of matte finished stainless steel panels.

*Spanish version >*

*Frente a la proliferación de formas arbitrarias que han surgido en los últimos años en la arquitectura de bodegas, proponemos la forma más sencilla: una simple caja metálica alargada que, como un artefacto, una máquina, se posa en el terreno.*

*Diferenciamos dos zonas con claridad: la de la producción del vino, la bodega propiamente dicha, y la de la mecanización y embotellado.*

*Para la bodega creamos una caja con gran inercia, bien aislada y con las condiciones de todo tipo que requiere este espacio para la óptima fermentación de los caldos en odres y barricas. Con unos esquemas de circulación muy claros.*

*Para la elaboración y embotellado, con una maquinaria actual de gran interés visual, creamos una caja muy transparente, como un gran escaparate donde todo puede ser visto.*

*Entre las dos áreas, un patio principal de acceso que une y separa a la vez ambas zonas. La zona de elaboración es presidida por unas oficinas en planta alta, a modo de puente de mando, que también se abren al patio. A su otro costado, un espacio de*