

Supplementary material

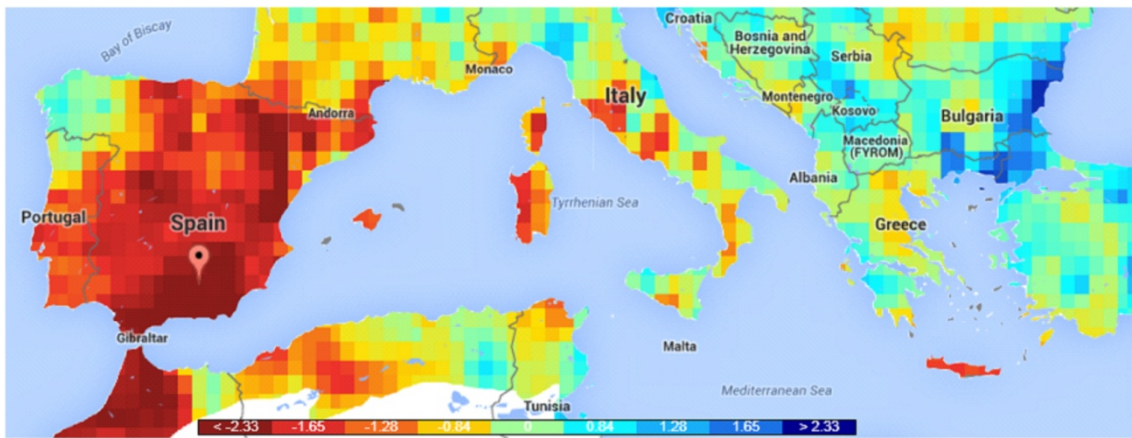


Figure S1. Map of the Mediterranean Basin with the SPEI values for December 1995 (minimum SPEI for the period 1950-2015). Blue and red indicate high and low values of SPEI, respectively. The location of the study is marked. The map was obtained using the SPEI Global Drought Monitor web page (<http://sac.csic.es/spei/map/maps.html>).

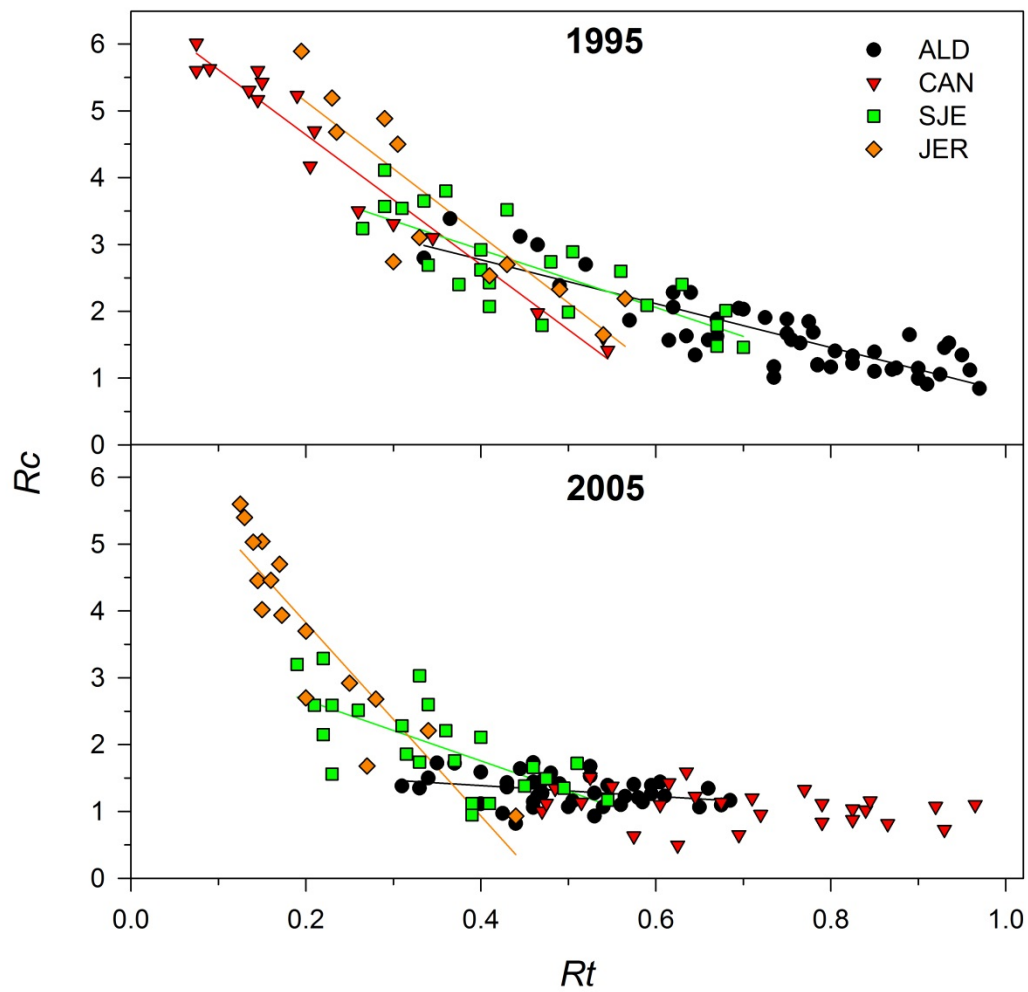


Figure S2. Relationships observed between two resilience indices (R_t , R_c) calculated for the four Scots pine plantations (sites are abbreviated with three-letter codes) and considering the 1995 (upper plot) and 2005 (lower plot) droughts.

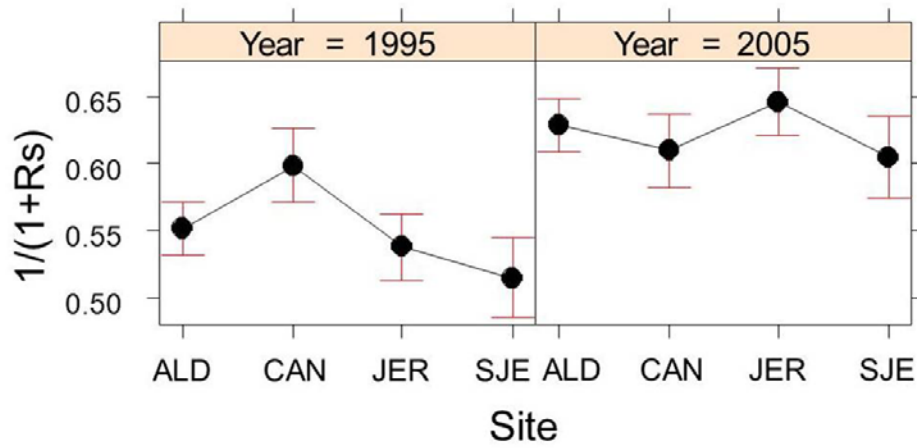


Figure S3. Effects of the interactions between dry years and site on R_s for planted pines. The means and the 95% confidence intervals are shown. Note that low values of y-axis indicate high values of R_s , and vice versa, due to the inverse transformation of the variable.