

Figure A2.1. Location of the regions of provenance (RPs) studied for *Pinaceae* species. The red color was assigned to the X coordinates (first PCoA axis) of the RPs centroids and green to the Y coordinates (second PCoA axis) of the centroids.

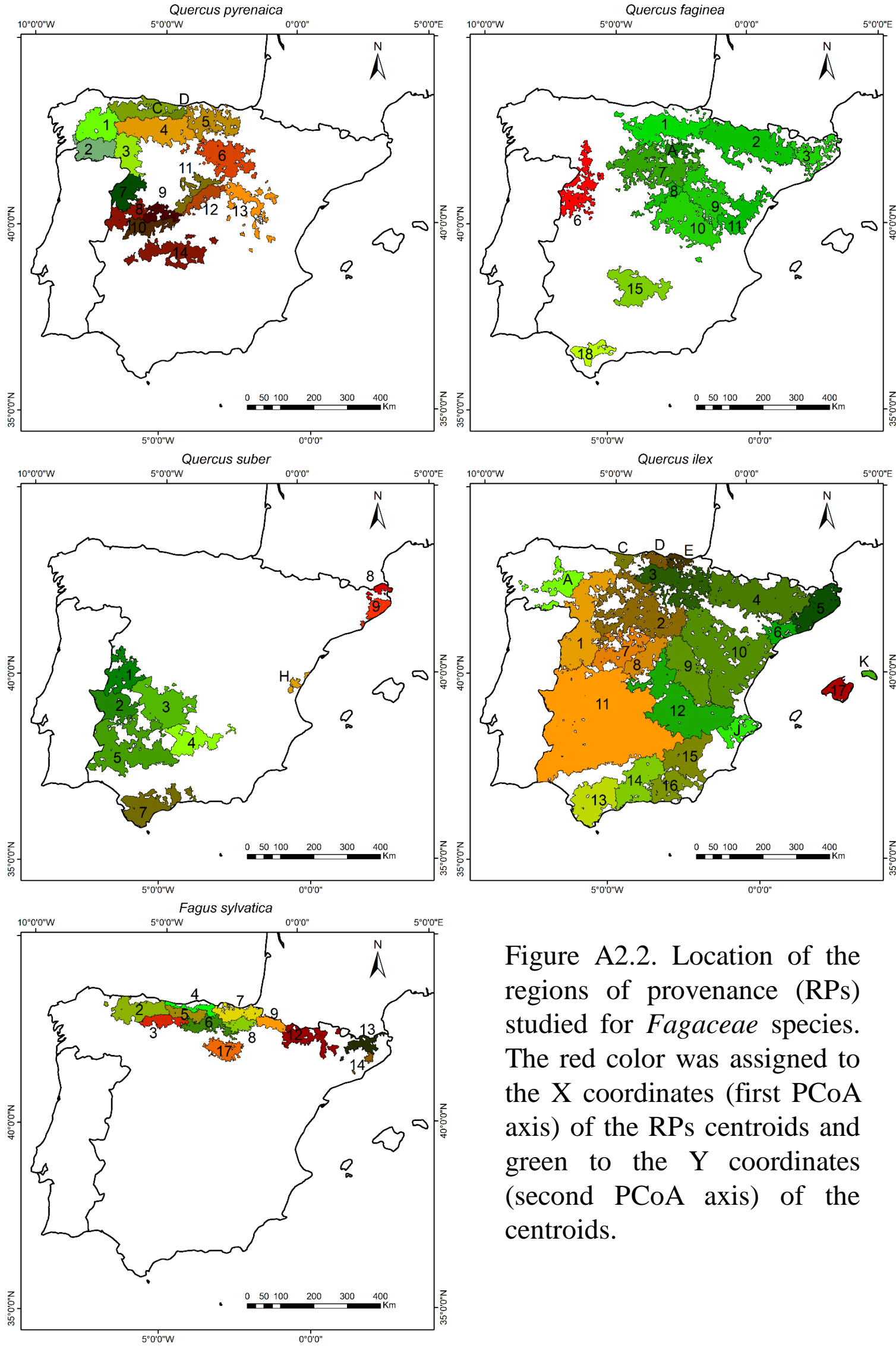


Figure A2.2. Location of the regions of provenance (RPs) studied for *Fagaceae* species. The red color was assigned to the X coordinates (first PCoA axis) of the RPs centroids and green to the Y coordinates (second PCoA axis) of the centroids.