

## 6. APPENDIX



## 6.1 Database-assisted research

The dissertation focuses on understanding the number and geographical distribution of the existing Chinese Buddhist and Cistercian monasteries, laying the foundation for the next steps: case selection, analysis, and comparison. Therefore, two databases [buddhist.wiki](#) [Fig.1] and [cistercian.wiki](#) [Fig.2] are created to aid the research. Many aspects affect the effectiveness of the database, the most important of which is the accuracy of the data source.

In 2018, the way of analysis through database was considered and adopted into the dissertation when I conducted research in Graduate School of Arts and Sciences of Harvard as a Visiting Fellow. In the World Map developed by Harvard University, a database of Buddhist Sites (2006) BGIS1 was published by the editor Lex Berman. Together with map of environment, map of transportation, map of energy, etc., it seems practical useful to have Buddhist Sites, which can conduct several possibilities research directions. The further communication with Lex Berman got me to understand the source of this database. It was originally done and shared by Wujiang, professor in the Department of East Asian Studies, director of Center for Buddhist Studies in Arizona University. It was published on the website<sup>2</sup> of Arizona University. The data source is the book Zhongguo Fojiao Siyuan Minglu(中国佛教寺院名录)<sup>3</sup> published in 2006. As they claimed “*The project aims to build a searchable relational database of Buddhist monasteries in the world by using Geographic Information System (GIS) tools. Combining the power of data science and electronic mapping, the GIS software can integrate different types of information about monasteries and illustrate them visually on maps.*”<sup>4</sup>

However, this data source is not accurate at all. The information contained in the book is collected by September 2005, and the content is only accurate to the county and city. The total numbers of Buddhist Monasteries recorded by the database on the website is 18938. However, there are only 6172 distinct geo points, among which 3123 points have no duplicates. It means that 83.51% (1-3123/19938) of the monastery locations are incorrect. Among the rest of 16.49% (3123 points), 20 monasteries are randomly selected and manually verified with their geo locations. All these geo locations do not precisely relate to 20 monasteries. Actually, only 8 out of 20 geo locations have monasteries nearby, just take Yuantong Chansi(圆通禅寺) as an example, which exact location is around 10 kilometers far away from the geo locations showed in the excel [Fig.3].

According to the Religious Affairs Regulations (Order No. 426 of the State Council of the People's Republic of China announced on November 30, 2004, revised and approved by the 176th Executive Meeting of the State Council on June 14, 2017), Article 7 sets The establishment, change and cancellation of religious organizations shall be registered in accordance with the relevant regulations administered by the state social organizations.<sup>5</sup> Therefore, we have reasons to believe that the full list of venues for religious activities published by the National Religious Affairs Administration is trustworthy.

To deal with data of monasteries, the dissertation uses MySQL as database with MySQL Workbench and Microsoft Office Access as its clients. Then it uses SQL and Javascript (NodeJS) to process data programmatically. Crawl two sets of data from the website<sup>6</sup> of National Religious Affairs

1 <http://www.worldmap.harvard.edu/chinamap/>  
2 <https://geo.library.arizona.edu/?ogpids=uarizona-china-buddhisttemplelocations-2006>  
3 江苏佛教协会. 中国佛教寺院名录. 香港: 中华佛教出版社.  
4 <https://cbs.arizona.edu/buddhist-geographical-information-system-bgis>  
5 宗教事务条例 (2004年11月30日中华人民共和国国务院令426号公布, 2017年6月14日国务院第176次常务会议修订通过) 第七条: 宗教团体的成立、变更和注销, 应当依照国家社会团体管理的有关规定办理登记。  
6 <http://www.sara.gov.cn/zjhdcjsjbx/index.jhtml>



Fig.1 Database of Han Buddhist Monasteries in China, from buddhist.wiki.

Administration (国家宗教事务局): A full list of venues for religious activities (hereinafter referred to as monastery list)[Fig. 4], which has the following five fields: Address, place\_name, religion\_name, person\_charge, sect. A list<sup>7</sup> of three levels of administrative divisions - province, city and district - in mainland China (hereinafter referred to as division list). There are spaces (leading, trailing, middle) in some of the data, remove them. Most addresses are well formatted: starting strictly with “xx省 (Province)xx市 (City) xx区 (District)”, but there is still a certain amount of addresses that are not. For those well formatted addresses, extract province, city and district using the division list. For the rest: Call Baidu map geocoder API<sup>8</sup> to get coordinate (latitude and longitude) by address. Call Baidu map reverse geocoder API<sup>9</sup> to get province, city, and district. After the processing, we get the province, city, and district information of all monasteries. Save them separately in three new fields.<sup>10</sup> Call Baidu geocoder API to get coordinate by place\_name and city. The result has a field called “comprehension” representing the accuracy. Call Baidu reverse geocoder API to get address (including province, city, district, formatted address, etc.) by coordinate. The result is in the current administrative division. However, some county-level administrative regions directly subordinate to province (e.g. 湖北省仙桃市, 海南省定安县). For them, we manually fill the city field with district. Now we get coordinates and address details of all the monasteries. However, many of them are not accurate. The following ones are filtered out: (1) The original province, city and district are different from those in reverse geocoding result. (2) Duplicate coordinates. Baidu geocoding API

7 <http://www.sara.gov.cn/r/cms/gjzsjw/gjzsjw/themes/js/data.js>  
8 <http://lbsyun.baidu.com/index.php?title=webapi%2Fguide%2Fwebservice-geocoding>  
9 <http://lbsyun.baidu.com/index.php?title=webapi%2Fguide%2Fwebservice-geocoding-abroad>  
10 NOTE: You may ask: on the website, you can do a filter by province, city and district, why not leverage on that to fill these 3 fields? That's because after some investigation with the help of F12 (Google Chrome Developer Tools), it can be inferred that the website does the filter by simply creating a string of “xx省xx市xx” consisting of province, city and district and then checking the address' prefix. It does not work for those not well formatted addresses.



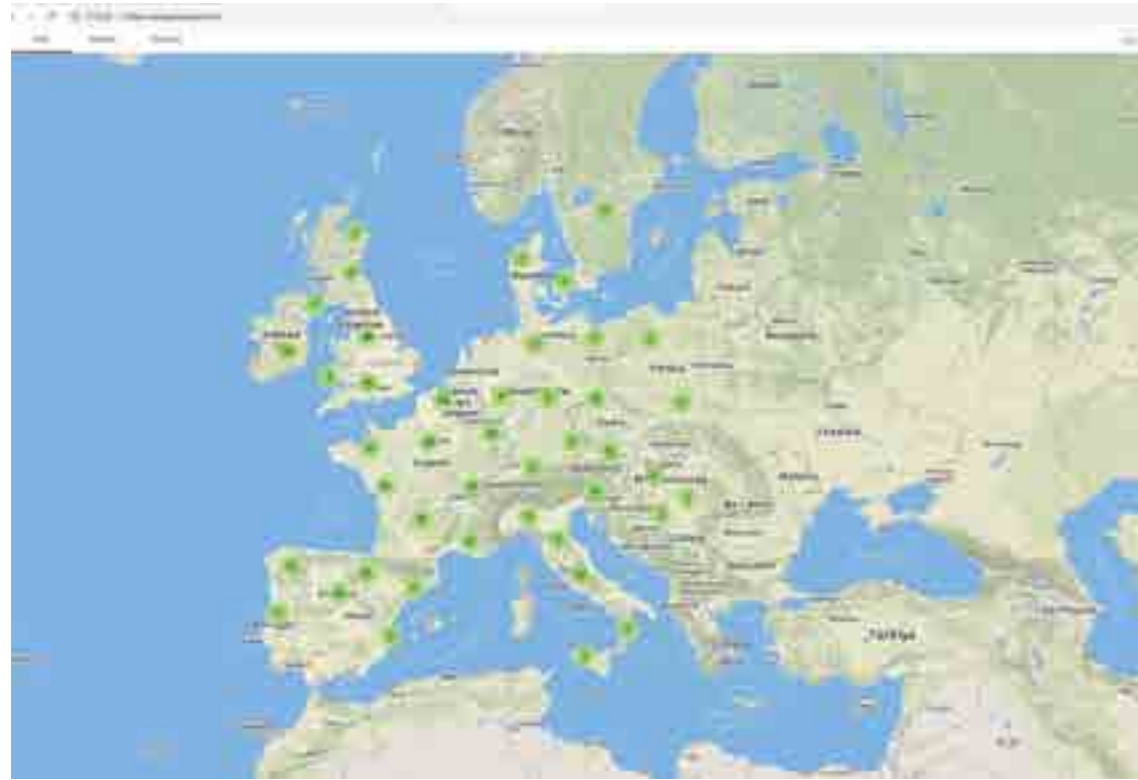


Fig.2 Database of Cistercian Monasteries in Europe, from cistercian.wiki.

sometimes returns the coordinate of the city/district center regardless where it actually is, which results in many duplicate coordinates. (3) "comprehension" is less than 50. In the end, we get a list of trustworthy locations of monasteries.

It is worth noting that the full list of venues for Buddhist sites including three sects: Mahāyāna, Theravāda and Tibetan. In China, Mahāyāna Buddhism is also called Chinese Buddhism or Han Buddhism. Among data on 34098 Buddhist monasteries from the official website of the National Religious Affairs Administration, there are 28558 Han Buddhist monasteries. Then among accurate coordinates of 12647 Buddhist monasteries on Baidu Map, there are 10758 Han Buddhist monasteries.

Regarding the Cistercian Monasteries, the data was processed in a similar way. The data source for the location of the Cistercian Monasteries is mainly based on the following data: Map of member Cistercian abbeys<sup>11</sup> of European Charter of Abbeys and Cistercian sites from the official website of Europe Cister, the List of Cistercian monasteries from Wikipedia<sup>12</sup>[Fig.5], Principales Abbayes Montrant L'expansion de L'art Cistercien Au XIIe Et Au XIIIe Siècle<sup>13</sup>[Fig.6], Principales Abbayes Cisterciennes Et Leur Filiation<sup>14</sup>[Fig.7], Map of the Expansion of the Cistercian Order in the Exposition of Monastery of Santes Creus [Fig.8]. The Map of member Cistercian abbeys shows very limited data that only 199 Cistercian Abbeys are recorded, including France (109), Germany

11 Notes: <https://www.cister.net/abbayes/map.php>  
 12 Notes: [https://en.wikipedia.org/wiki/List\\_of\\_Cistercian\\_monasteries](https://en.wikipedia.org/wiki/List_of_Cistercian_monasteries)  
 13 Dimier, A., & Zodiaque. (1971). L'art cistercien hors de France (Nuit de temps ; 34). La Pierre-qui-vire, Yonne]: Zodiaque.  
 14 Duby, G. (1976). Saint Bernard, l'art cistercien (Les Grands bâtisseurs ; 1). Paris: Arts et métiers graphiques.

FID	the_geom	OBJECTID	BGHS_ID	NM_ENG	NM_HZ	TYPE_EN	TYPE_HZ	POSTCODE	SRG_HZ	LAT	LONG
2	china_bgis POINT (75	17816	17605	Kaitwendu	喀什地区佛教协会	association	协会	844000	中国佛教	39.48028	75.58778
3	china_bgis POINT (76	17863	17879	Kashgar	喀什地区佛教协会	association	协会	845300	中国佛教	39.70872	76.10120
4	china_bgis POINT (78	13327	17559	Lanzhou	兰州市佛教协会	monastery	寺	730000	中国佛教	36.4925	103.55888
5	china_bgis POINT (79	15228	17563	Ruidi	日土寺	monastery	寺	856100	中国佛教	33.4225	78.82388
6	china_bgis POINT (78	13576	17579	Gugusi	古格寺	monastery	寺	856000	中国佛教	31.45917	79.67620
7	china_bgis POINT (79	13601	17578	Tuoheti	托合台寺	monastery	寺	856000	中国佛教	31.47722	79.76
8	china_bgis POINT (79	17189	17883	Hetianshan	和田地区佛教协会	association	协会	848000	中国佛教	37.11139	79.91583
9	china_bgis POINT (80	18337	17878	Aksu	阿克苏地区佛教协会	association	协会	843000	中国佛教	41.17164	80.25684
10	china_bgis POINT (80	17159	17929	Wuzongzi	乌宗塔拉塔	others	其他	848000	中国佛教	37.00623	80.99006
11	china_bgis POINT (81	12284	17508	Gongbutu	贡不吐寺	monastery	寺	856000	中国佛教	30.48638	81.088
12	china_bgis POINT (81	18588	17605	Shangyuan	上元塔	temple	塔	835600	中国佛教	43.15806	81.1275
13	china_bgis POINT (81	18638	17602	Jingyuan	静远塔	monastery	寺	835000	中国佛教	43.83611	81.14817
14	china_bgis POINT (81	18637	17603	Chabao	查巴塔	monastery	寺	835300	中国佛教	43.83811	81.14817
15	china_bgis POINT (81	12128	17506	Yuanzhen	元真塔	association	协会	856000	中国佛教	30.3125	81.18187
16	china_bgis POINT (81	12129	17510	Chengde	成德塔	monastery	寺	856000	中国佛教	30.3125	81.18187
17	china_bgis POINT (81	12130	17515	Chuguo	楚固塔	monastery	寺	856000	中国佛教	30.3125	81.18187
18	china_bgis POINT (81	12131	17515	Xinsheng	新成塔	temple	塔	856000	中国佛教	30.3125	81.18187
19	china_bgis POINT (81	12132	17516	Gugong	古公塔	temple	塔	856000	中国佛教	30.3125	81.18187
20	china_bgis POINT (81	12050	17507	Kuoguo	库国塔	monastery	寺	856000	中国佛教	30.25917	81.20667
21	china_bgis POINT (81	12066	17512	Kuoguo	库国塔	monastery	寺	856000	中国佛教	30.25917	81.20667
22	china_bgis POINT (81	13183	17509	Guguo	古固塔	monastery	寺	856000	中国佛教	31.07972	81.28828
23	china_bgis POINT (81	13184	17515	Zhonghe	钟合塔	monastery	寺	856000	中国佛教	31.07972	81.28828
24	china_bgis POINT (81	13185	17513	Cuzhu	促朱塔	monastery	寺	856000	中国佛教	31.07972	81.28828
25	china_bgis POINT (81	18628	17812	Huanghe	黄河塔	monastery	寺	835000	中国佛教	43.86333	81.51222
26	china_bgis POINT (81	18629	17813	Jinhe	金河塔	monastery	寺	835000	中国佛教	43.86333	81.51222
27	china_bgis POINT (81	18483	17882	Guandun	关墩塔	others	其他	847300	中国佛教	43.79333	81.60667
28	china_bgis POINT (82	18716	17884	Dezhen	德真塔	temple	塔	833400	中国佛教	44.90167	82.00834
29	china_bgis POINT (82	18720	17885	Lama	喇嘛塔	temple	塔	833400	中国佛教	44.90167	82.00834
30	china_bgis POINT (82	18618	17910	Jicheng	吉成塔	monastery	寺	835700	中国佛教	43.74333	82.60667
31	china_bgis POINT (82	18619	17917	Guangshou	广寿塔	monastery	寺	835700	中国佛教	43.74333	82.60667
32	china_bgis POINT (82	18620	17918	Lama	喇嘛塔	temple	塔	835700	中国佛教	43.74333	82.60667
33	china_bgis POINT (82	17166	17914	Niyu	尼玉塔	monastery	寺	848500	中国佛教	37.06111	82.68672
34	china_bgis POINT (82	17167	17915	Niyu	尼玉塔	others	其他	848500	中国佛教	37.06111	82.68672
35	china_bgis POINT (82	18712	17904	Ba	巴塔	temple	塔	833304	中国佛教	44.57667	82.80639
36	china_bgis POINT (82	18458	17907	Sobashan	苏巴什塔	monastery	寺	842000	中国佛教	41.71556	82.985
37	china_bgis POINT (82	18460	17908	Dabi	大寺	monastery	寺	842000	中国佛教	41.71556	82.985
38	china_bgis POINT (82	18461	17909	Kumudun	库木敦塔	monastery	寺	842000	中国佛教	41.71556	82.985
39	china_bgis POINT (82	18462	17910	Kazi	喀孜塔	monastery	寺	842000	中国佛教	41.71556	82.985
40	china_bgis POINT (82	18463	17911	Semunan	森木南塔	others	其他	842000	中国佛教	41.71556	82.985
41	china_bgis POINT (84	18697	17900	Tatun	塔敦塔	temple	塔	833008	中国佛教	44.37028	84.20194
42	china_bgis POINT (84	18790	17906	Kelamayi	喀拉玛依塔	association	协会	834000	中国佛教	45.58884	84.46722
43	china_bgis POINT (85	18864	17892	Wangji	王吉塔	others	其他	834400	中国佛教	46.79388	85.72817
44	china_bgis POINT (86	18894	17922	Shi	石塔	association	协会	832000	中国佛教	44.29572	86.03806
45	china_bgis POINT (86	18468	17931	Bayingan	巴音阿南塔	association	协会	841000	中国佛教	41.75867	86.13859
46	china_bgis POINT (86	18551	17880	Huanghe	黄河塔	temple	塔	841312	中国佛教	42.00111	86.26225
47	china_bgis POINT (86	18517	17921	Lanling	兰陵塔	monastery	寺	841100	中国佛教	42.05861	86.56883
48	china_bgis POINT (86	18518	17922	Dalong	大东塔	monastery	寺	841100	中国佛教	42.05861	86.56883
49	china_bgis POINT (86	18519	17923	Xin	新塔	monastery	寺	841100	中国佛教	42.05861	86.56883
50	china_bgis POINT (86	18528	17883	Baham	巴哈姆塔	temple	塔	841400	中国佛教	41.87111	86.43823

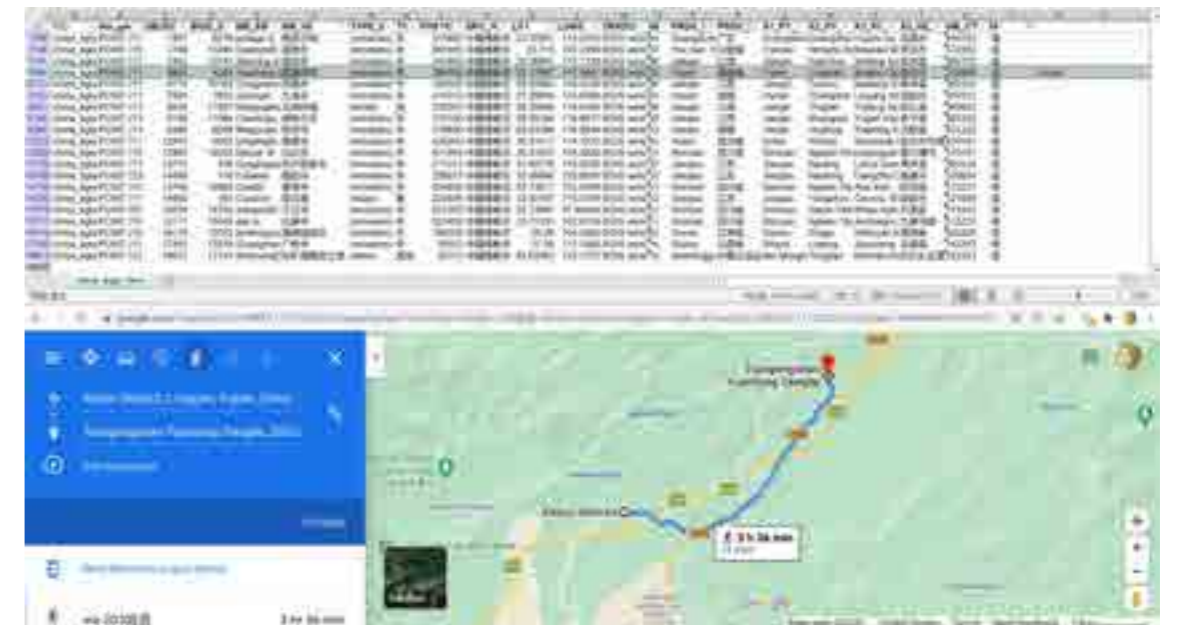


Fig.3 Errors in the geo locations of the database of Buddhist Sites (2006) BGIS by Professor Wujiang of Arizona University.



Fig.4 Cistercian Monasteries in Western Europe, from cister.wangweiqiao.com.



Fig.5 The List of Cistercian monasteries from Wikipedia.

(28), Spain(13), Italy(8), Belgium (13), Portugal (7), Poland (7), Sweden (6), Denmark (2), Switzerland (2), England (2), Netherlands(1), Czech Republic (1). Therefore, combine the above data, there are totally 926 Cistercian Monasteries in the world recorded in the database, 808 of which can be found precisely their location in the Google Map. There are 668 Cistercian monasteries in Europe, of which 18 are Trappist. According to the List of Cistercian monasteries from Wikipedia, Cistercian monasteries are divided into two groups: the Common Observance and the Strict Observance (Trappists), that currently there are nearly 169 Trappist monasteries in the world.

The two databases clearly show the distribution of monasteries. It is especially important that the dense distribution means there are more religious buildings and more likely to have active religious life. This lays the foundation for the next field investigation and selection of research objects. Han Buddhist monasteries are mainly distributed in Southern China, and most of them are in the mountains [Fig.9]. The Cistercian monasteries are more distributed in Western Europe and mostly also in valleys [Fig.10]. Therefore, the preliminary judgment will select 20 monasteries each in Southern China and Western Europe for extensive research.

Before starting the investigation, the preliminary work collects data for each monastery, mainly focusing on collecting books, articles, poems, drawings, old photos, historical maps, and other content related to the monastery architecture.

It is done through the following four channels:

(1) Historical information like monastery records, mountain records, local chronicles, steles, poems,





Fig.6 Principales Abbayes Montrant L'expansion de L'art Cistercien Au XIIe Et Au XIIIe Siècle. Dimier, A., & Zodiaque. (1971). L'art cistercien hors de France (Nuit de temps ; 34). La Pierre-qui-vire, Yonne: Zodiaque.

landscape paintings, and historical atlas related to monasteries, collected from monasteries and libraries like the National Library of Spain, Library of Harvard University and National Library of France, etc.

(2) Modern records like photos and travel notes by photographers, missionaries, architects, and historians from the end of the nineteen century until nowadays.

(3) Mapping drawing like topographic map, drawing on monastic architecture, perspectives are specially collected.

(4) Modern and contemporary research works and surveying papers related to the monastery's history and architecture.

The data is collected and aggregated into the databases at the same time, which is mainly reflected in the establishment of archives for each research monastery. This is not only to facilitate data sorting, but also to lay the foundation for future research on monastic architecture. Besides, monastic architecture data is demonstrated from two dimensions of time and space: the four aspects [Fig.11] of architecture, history, art and personage of Buddhist monasteries can be filtered through the timeline while photos and explanations can show through click on the specific space on the monastery plan.

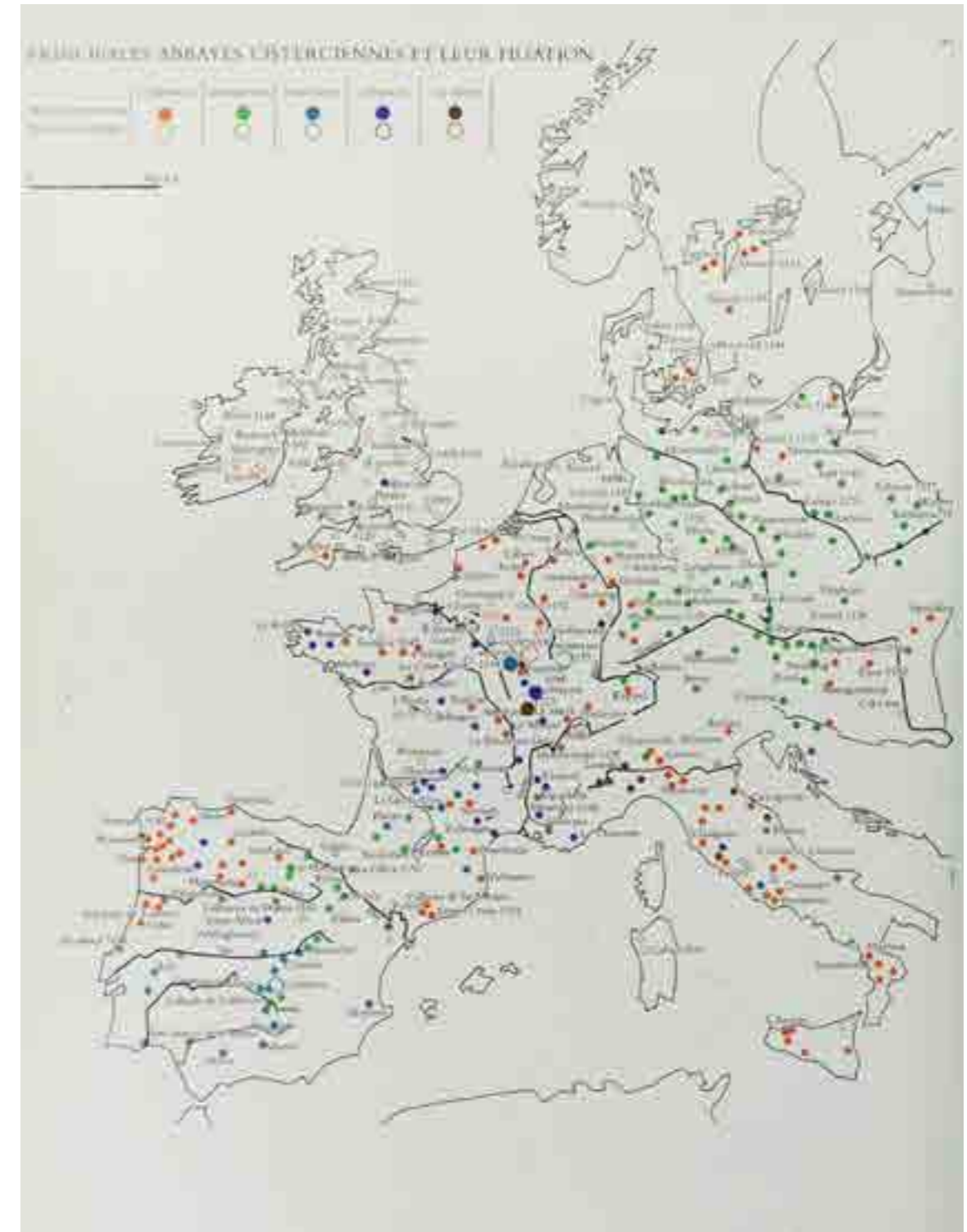


Fig.7 Principales Abbayes Cisterciennes Et Leur Filiation. Duby, G. Saint Bernard, l'art cistercien (Les Grands bâtisseurs ; 1). Paris: Arts et métiers graphiques. 1976.



Fig.8 Image of the Expansion of the Cistercian Order in the Exposition of Monastery of Santes Creus.



Fig.9 Han Buddhist Monasteries in Southern China, from buddhist.wiki.



Fig.10 Cistercian Monasteries in Western Europe, from cister.wangweiqiao.com.

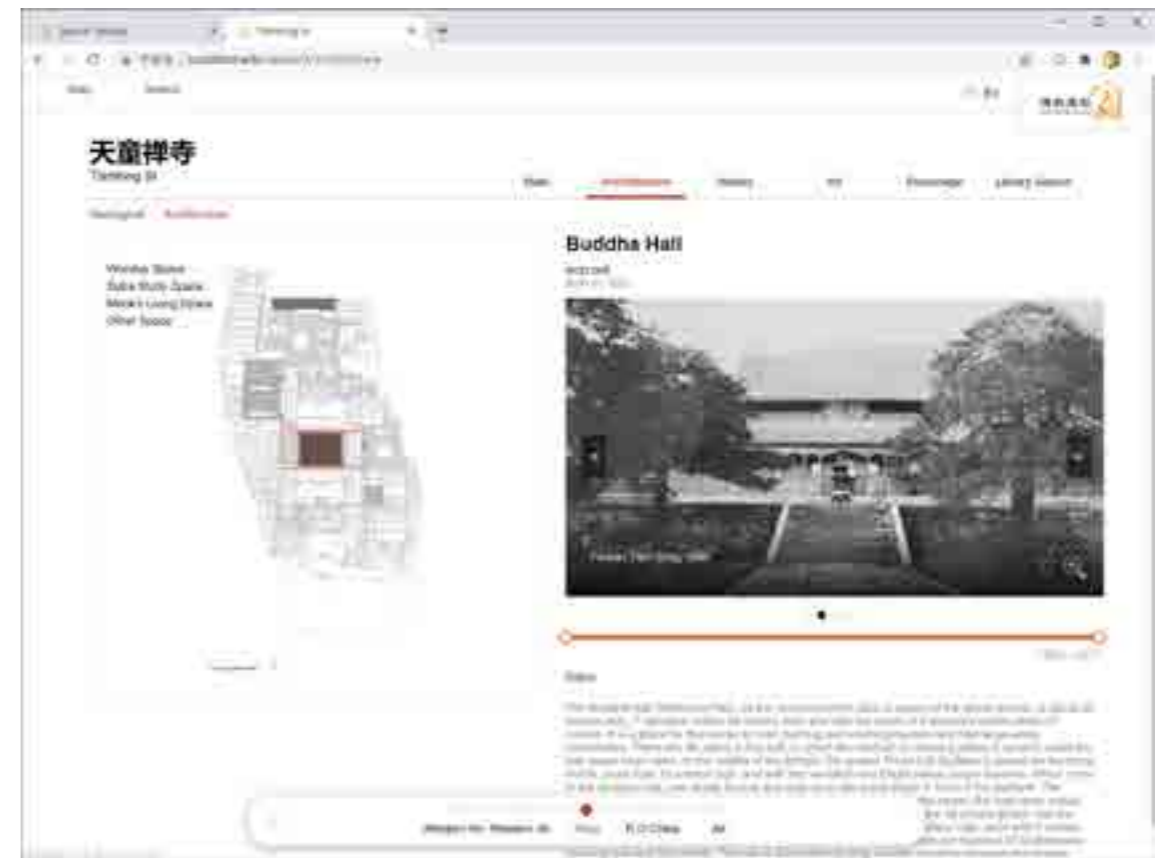
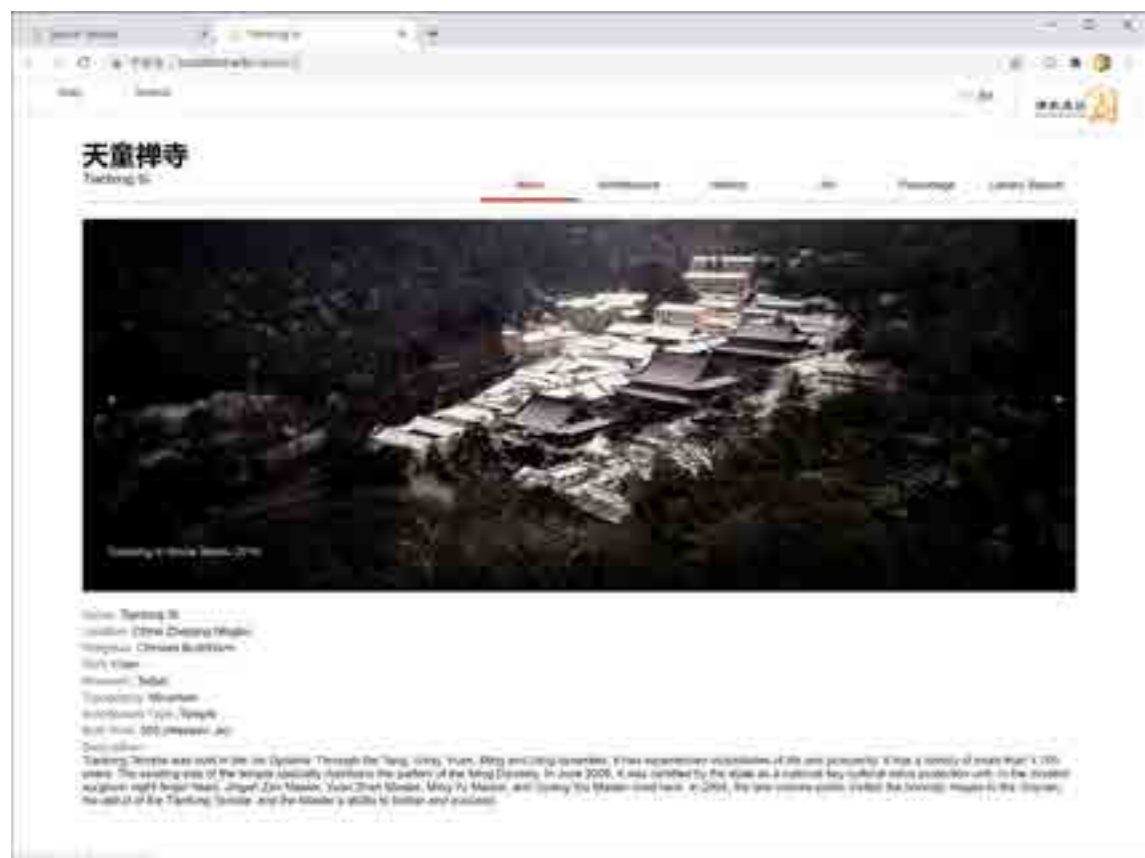
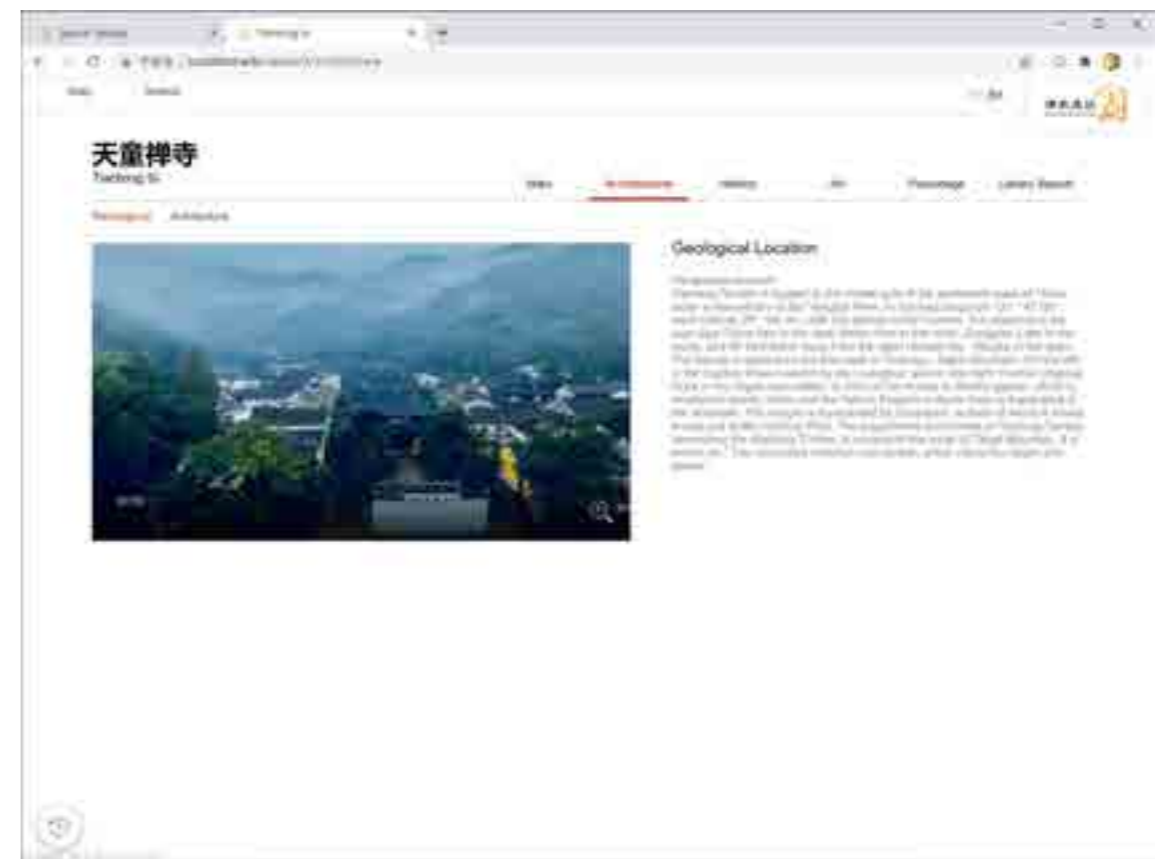
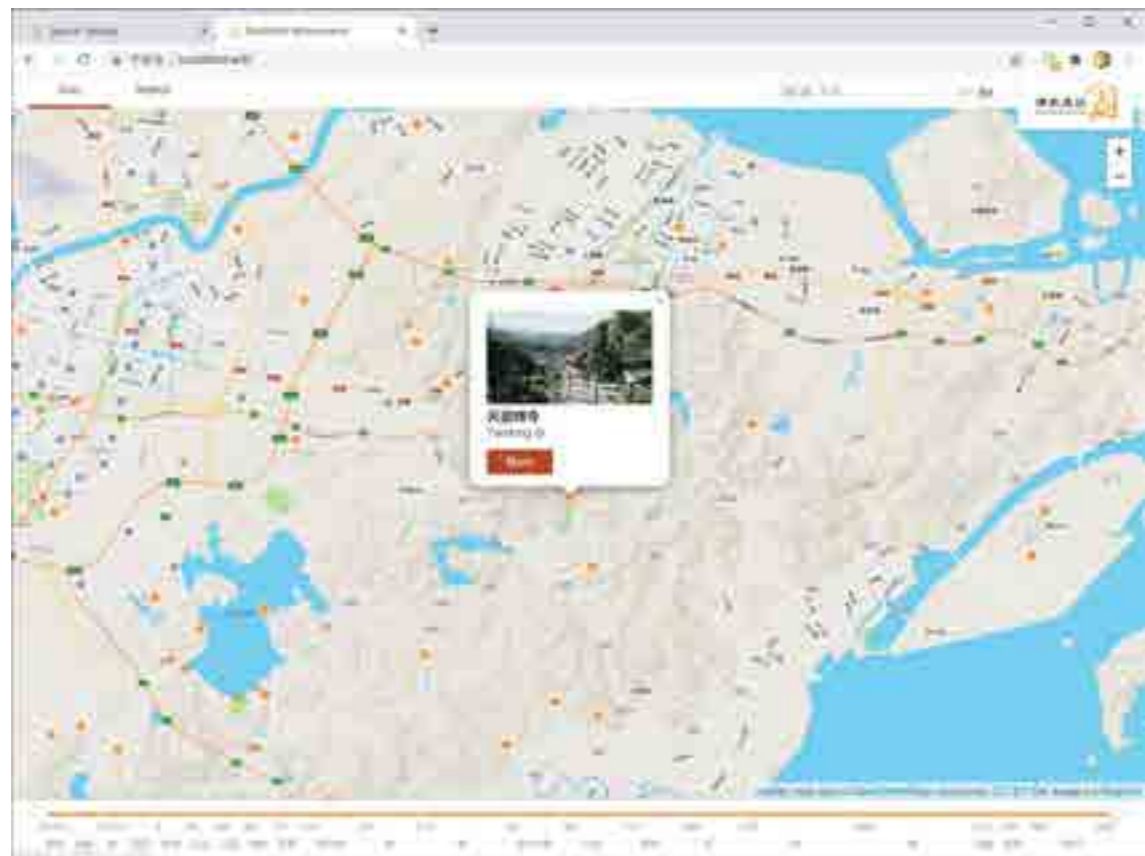


Fig.11 Archives for each monastery recorded in the database buddhist.wiki.

Fig.11 Archives for each monastery recorded in the database buddhist.wiki.

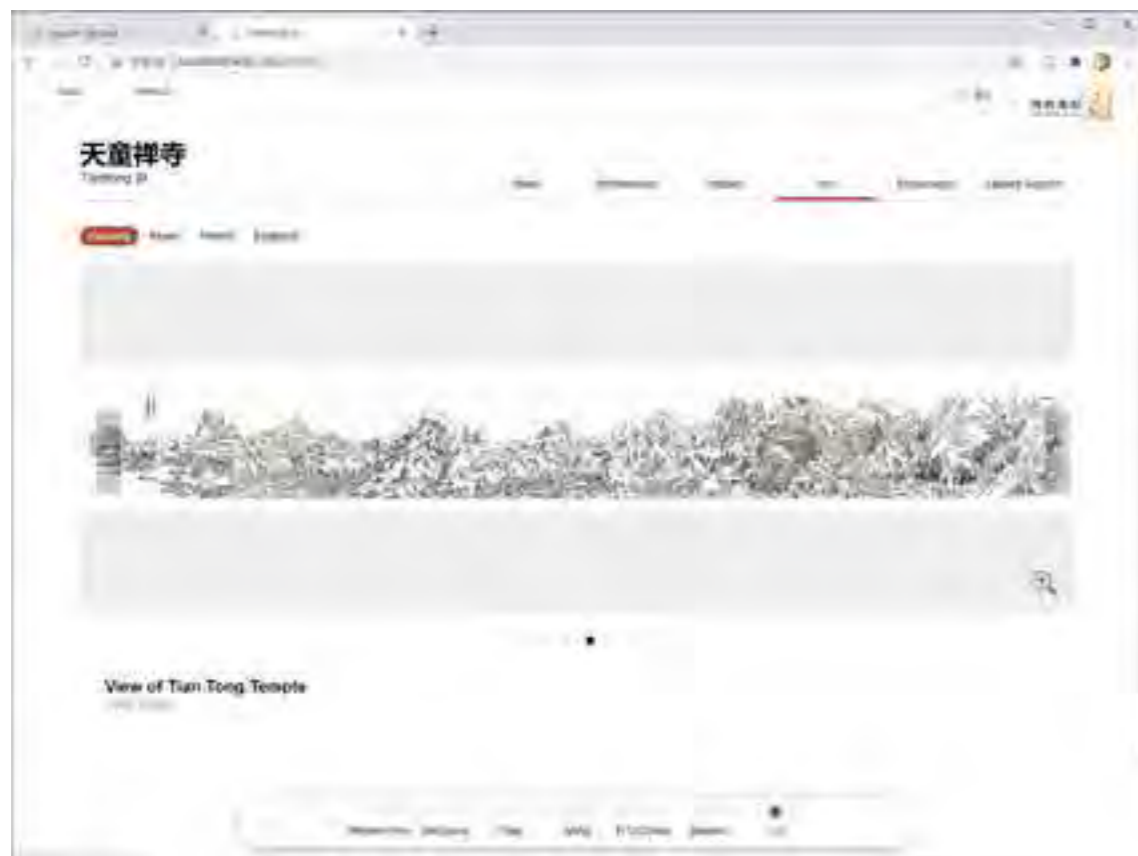
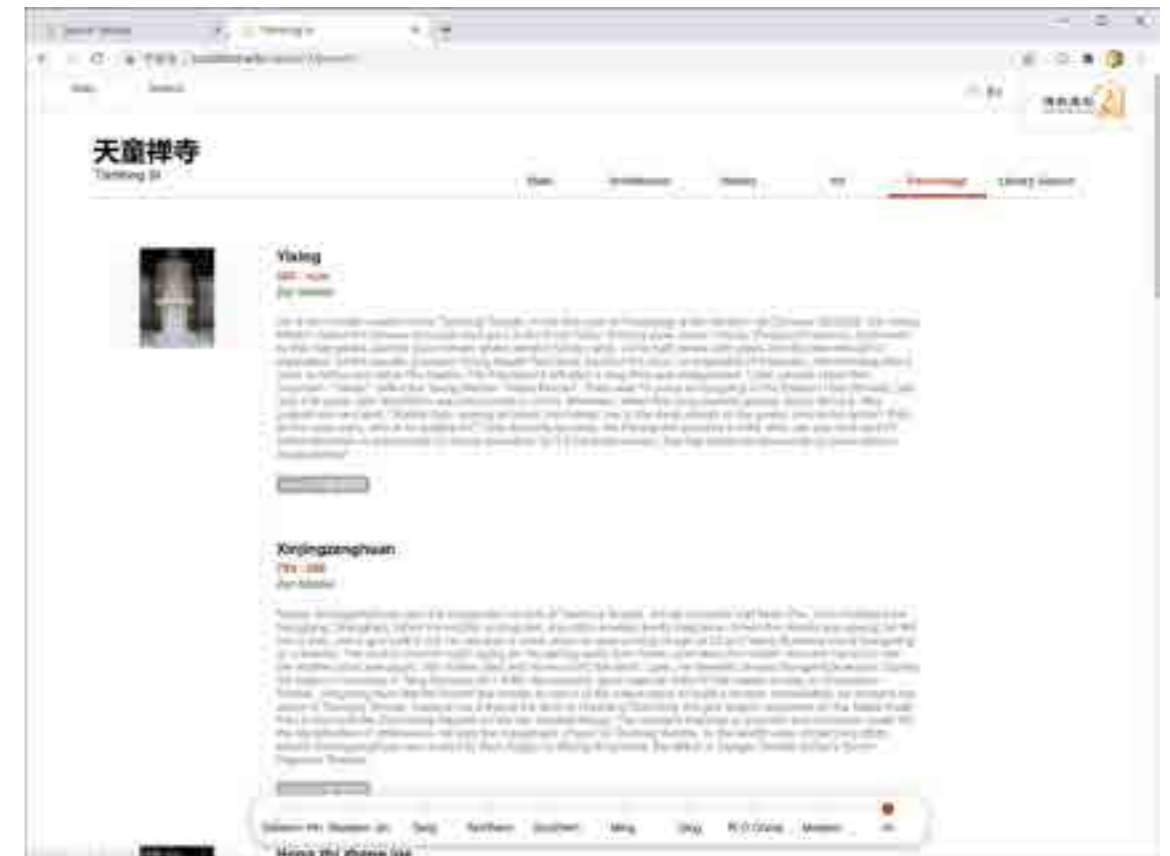
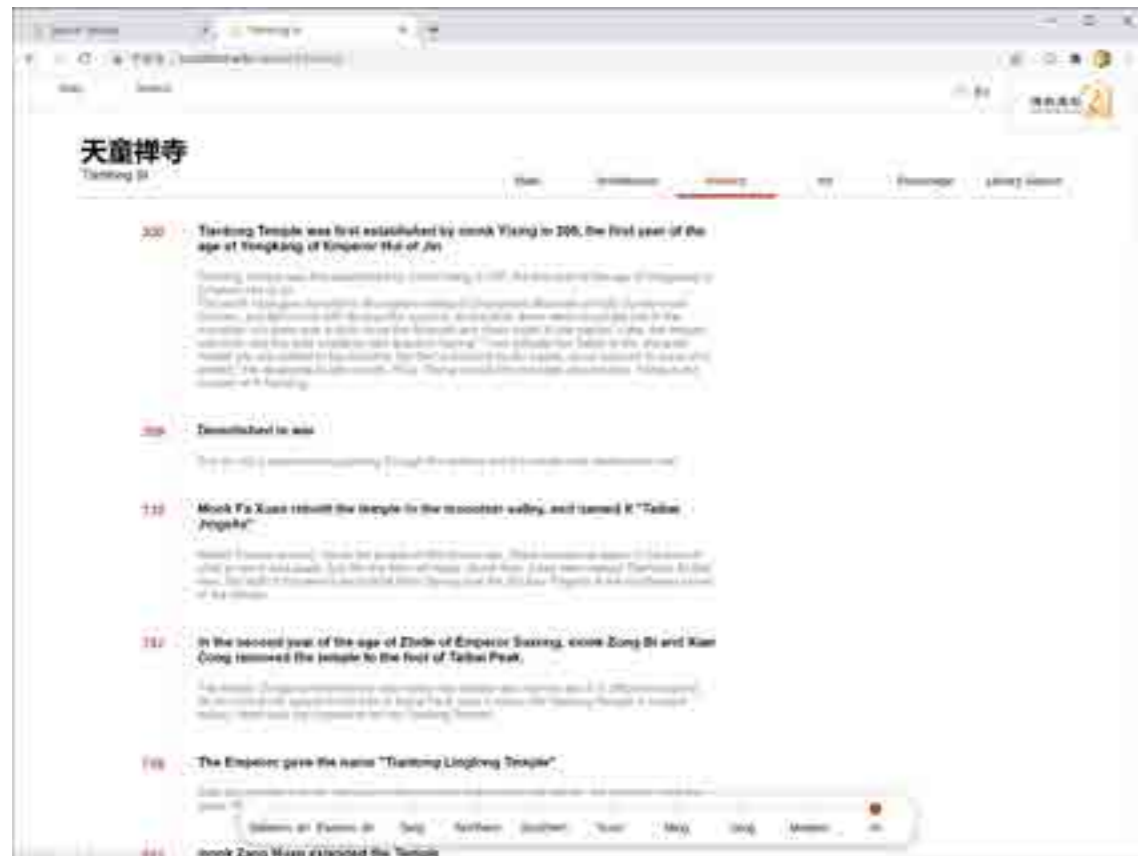


Fig.11 Archives for each monastery recorded in the database buddhist.wiki.

Fig.11 Archives for each monastery recorded in the database buddhist.wiki.

## 7. BIBLIOGRAPHY



## 7.1 Specific bibliography

- Altisent, A. *Història de Poblet*. [Poblet]: Abadía de Poblet; 1974.
- Augustine, Saint, Bishop of Hippo (345-430). *The Confessions of Saint Augustine*. Grand Rapids, MI: Christian Classics Ethereal Library.
- Boesiger, Willy. *Le Corbusier: (Oeuvre complete 1938-1946) (Vol. 4)*. Editions d'Architecture. 2015.
- Boisvert M. *A Comparison of the Early Forms of Buddhist and Christian Monastic Traditions*. Buddhist-Christian Studies. 1992.
- Bozal González, José Luis. 2016. *Iglesia del Monasterio de Santa Maria de Poblet, Una hipótesis sobre las fases de su construcción basada en sus signos de cantero*.
- Braunfels, W. and Laing, A. *Monasteries of Western Europe: the architecture of the Orders*. (Translated by Alastair Laing.). London: Thames and Hudson.1972.
- Bunsen, E. *The Angel-Messiah of Buddhists, Essenes, and Christians (ATLA monograph preservation program ATLA fiche 1987-0560)*. London: Longmans, Green; 1880.
- Cassidy-Welch M. *Monastic Spaces and Their Meanings: Thirteenth-Century English Cistercian Monasteries*. Turnhout, Belgium: Brepols; 2001.
- Clark, J. *The abbey of St. Gall as a centre of literature & art*. Cambridge [Eng.]: The University press. 1926.
- Chuta Ito, *History of Chinese architecture*, Changsha, Hunan University Press, 2014.
- Coon, L. L. *Dark Age Bodies (The Middle Ages series)*. Philadelphia: University of Pennsylvania Press.2011.
- Ding, TK. *Guoqing Si Zhi. 国清寺志*. Shanghai: East China Normal University Press; 1995.
- Edkins, J. *Chinese Buddhism: A volume of sketches, historical, descriptive, and critical (Popular ed., new and rev. ed., Trübner's oriental series)*. London: K. Paul, Trench, Trubner. 1893.
- Eliade, M. *Occultism, witchcraft, and cultural fashions: Essays in comparative religions*. Chicago: University of Chicago Press. 1976.
- Ernst Fiechter-Zollkofer, *Etwas vom St. Galler Klosterplan aus der Zeit um 820*.
- Fingesten, P. *East is East: Hinduism, Buddhism, Christianity; a comparison*. Philadelphia: Muhlenberg Press; 1956.
- Finley, J. *Christian meditation: Experiencing the presence of God (1st ed.)*. San Francisco]: Harper San Francisco. 2004.
- Foot, S. *Monastic life in Anglo-Saxon England, c. 600-900*. Cambridge, UK; New York: Cambridge University Press.2006.
- Gaud, Gaud, Henri, Leroux-Dhuys, Jean-François, & Crook, John. *Cistercian Abbeys: History and Architecture*. Köln:Könemann; 1998.
- Gernet, J. *Chine et christianisme: Action et réaction (Bibliothèque des histoires)*. Paris: Gallimard. 1982.
- Ginzberg, Louis. *Legends of the Jews Vol I: The Creation of The World - The First Things Created*, translated by H. Szold. Philadelphia: Jewish Publication Society. 1909.
- Harvey, P. *An introduction to Buddhism: Teachings, history and practices (Second ed.)*. New York: Cambridge University Press. 2013.
- Heirman, A., & Torck, Mathieu. *A pure mind in a clean body: Bodily care in the Buddhist monasteries of ancient India and China*. Gent: Ginkgo Academia Press; 2012.
- Henry P. *For the Sake of the World: The Spirit of Buddhist and Christian Monasticism*. Minneapolis: Fortress Press; 1989.
- Ho, Puay-peng. (1995). *The Ideal Monastery: Daoxuan's Description of the Central Indian Jetavana Vihara*. *East Asian History*, (10), 1-18.
- Horn, W., Born, E., Dupree, A., & Adalard. *The Plan of St. Gall: A study of the architecture & economy of & life in a paradigmatic Carolingian monastery (California studies in the history of art; 19)*. Berkeley: University of California Press. 1979.
- Kilde, Jeanne Halgren. *Sacred Power, Sacred Space: An Introduction to Christian Architecture and Worship*. New York; Oxford: Oxford University Press. 2014.
- Jullien, François. *Un Sabio No Tiene Ideas, o, El Otro de la Filosofía*. Ediciones Siruela, 2001.
- Kinder, T., & Heald, David. *Architecture of Silence: Cistercian Abbeys of France*. New York, N.Y.: H.N. Abrams; 2000.
- Kinder, T. *Cistercian Europe: Architecture of Contemplation (English ed., Cistercian studies series; no. 191)*. Grand Rapids, Mich.: Kalamazoo, Mich.: W.B. Eerdmans Pub.; Cistercian Publications; 2002.
- King, W. *Buddhism and Christianity: Some bridges of understanding*. Philadelphia: Westminster Press; 1962.
- Leighton, T. *Visions of awakening space and time: Dōgen and the Lotus sutra*. Oxford; New York: Oxford University Press; 2007.
- Lenoir, A. *Architecture monastique (Collection de documents inédits sur l'histoire de France. 3. série, Archéologie)*. Paris: Impr. Nationale; 1852.
- Linazasoro, Jose Ignacio. *La Memoria del Orden*. Madrid, Abada Editores, S. L, 24.2013.
- Lluc Torcal Sirera, ACi 56(2006)344-389.
- Merton T. *Cistercian life*. Spencer, Mass.: Cistercian Book Service; 1974.



Merton, T. *Spiritual direction & meditation*. Collegeville, Minn.: Liturgical Press; 1987.

Nhật Hạnh. *Going home: Jesus and Buddha as brothers*. New York: Riverhead Books; 1999.

Merton T. *The Wisdom of the Desert; Sayings from the Desert Fathers of the Fourth Century*. New York: New Directions; 1961.

Patrick J. Geary. *Carolingian Culture at Reichenau & St. Gall*.

Pieris A. *Love Meets Wisdom: A Christian Experience of Buddhism*. New York: Orbis Books; 1988.

Presi.S. J. I. Linzasoro. *Ediz. italiana e francese [M]*. Rome: Casa dell'Architettura,2012.

Price, L., & Horn, W. *The Plan of St. Gall in brief: An overview based on the 3-volume work by Walter Horn and Ernest Born ...* Berkeley: University of California Press. 1982.

Prip-møller, Johannes. *Chinese Buddhist Monasteries. Their Plan and its Function as a Setting for Buddhist Monastic Life*. Copenhagen, G. E. C. Gads Forlag.1937.

Portal Liaño, J. González Moreno-Navarro, J.L. *La iglesia del Real Monasterio de Santa María de Poblet: pasado y presente de un desequilibrio*.Huerta, Santiago y Fabián López Ulloa (eds.). 2013.

Qi, S., & Xi yuan, ding kan. *Tiantai shan fang wai zhi yao: 10 juan, shou 1 juan tu* (National Library of China -- Harvard-Yenching Library Chinese rare book digitization project). China]: Qi shi Xi yuan ding kan ben.1767.

Qi,Zhouhua. 齐周华 . 台岳天台山游记 [M].1719.

Ricci, M., & Trigault, N. *De Christiana expeditione apud Sinas; suscepta ab Societate Iesu*. Lvgdvi: H. Cardon.1616.

Sanderson, W. (1985). *The Plan of St. Gall Reconsidered*. *Speculum*, 60(3), 615-632.

Santacana Tort, J. *El monasterio de Poblet, (1151-1181) (Anuario de estudios medievales. Anejo; 5)*. Barcelona: Consejo Superior de Investigaciones Científicas; 1974.

Shelby, L. (1981). *Walter Horn and Ernest Born, The Plan of St. Gall: A Study of the Architecture and Economy of, and Life in a Paradigmatic Carolingian Monastery (Book Review)*.22(1), 157.

Siren Osvald. *Chinese Painting: Leading Masters and Principles*, New York, Hacker Art Books, 1975.

Stachura Norbert. *Der Plan von St. Gallen: Masseinheit, Masstab und Massangaben oder das Dilemma im Schlafsaal*. Saint-Just-la-Pendue: N. Stachura.2004.

Su, B. 宿白 . (2009). *试论唐代长安佛教寺院的等级问题* . *文物* , (1), 27-40.

Svetla Popova. *Romanesque and Gothic Architecture, Art 220. Architectural Order and Monastic Order And Their Relationship According To "The Rule of St. Benedict" And the Plan of St. Gall*. 2001.

T08n0235. 金刚经 .

T09n0262. 妙法莲华经 .

T21n1419. 佛说造像量度经 .

T14n0452. 佛说观弥勒菩萨上生兜率天经 .

T23n1435. 十诵律 .

T30n158. 菩萨善戒经 .

T40n1804. 四分律删繁补缺行事钞 .

T45n1899. 中天竺舍卫国祇洹寺图经 .

T46n1934. 国清百录 .

T48n2025. 敕修百丈清规 .

T50n2060. 续高僧传 .

T51n2085. 法显高僧传 .

Tadashi Sekino, *Chinese cultural heritage*.

Tan, Qixiang. *Zhongguo li shi di tu ji 中国历史地图集* (1st. ed.). Shanghai]: Di tu chu ban she : Xin hua shu dian Shanghai fa xing suo fa xing; 1982.

Tan, Zhihui. *Daoxuan's Vision of Jetavana Imagining a Utopian Monastery in Early Tang*. Dissertation. The University of Arizona. 2002.

The Rule of Saint Benedict.

Thomas Allom. *The Chinese Empire, Illustrated Being A Series of Views from Original Sketches, Displaying the Scenery, Architecture, Social Habits, &C., of That Ancient and Exclusive Nation: Vol. 1*. S.I.J. 1858.

Thomson, J. *Illustrations of China and its people: A series of two hundred photographs, with letterpress descriptive of the places and people represented* (2nd ed.). London: Sampson Low, Marston, Low, and Searle. 1874.

Thoreau H.D. *Walden or. Life in the Woods*. New York: For the Heritage Club; 1939.

Van Der Laan, Hans. *El Espacio Arquitectónico: Quince Lecciones Sobre La Disposición Del Hábitat Humano*. Madrid:Willem Beekhof. 2015.

Wang, W. (2017). *The Stair: An Anthropological and Symbolic Element. A research on the stairs in the Long Chang Temple (China)*. *Ge-conservación*, 11, 50-56.

Wang, Z. *Nan Song fo jiao zhi du wen hua yan jiu 南宋佛教制度文化研究* (第 1 版 . ed.). Beijing: Shang wu yin shu guan; 2012.

Wang, Z. *Zhongguo Jidu jiao shi gang 中国基督教史纲* (1st. ed., Penglai ge cong shu). Shanghai: Shanghai gu ji chu ban she. 2004.



X57n0968. 增修教苑清规 .

Yan, Y. Jiang nan fo jiao shi 江南佛教史 (1st. ed.). Shanghai: Shanghai ren min chu ban she. 2000.

Yang, Shu. 杨澍 . 唐道宣告撰两部图经中寺院建筑及其可能形象研究 . 台北 : 花木兰文化 . 2019.

Zettler,2015. A Spaces for servants and provendarii in Early Medieval Monasteries. The example of the virtual monastery on the Plan of Saint Gall. Bulletin Du Centre D'études Médiévales D'Auxerre, (Hors-série n° 8), Bulletin du Centre d'études médiévales d'Auxerre, 2015-01-22 (Hors-série n° 8).

Zhang, SQ. Wu Shan Shi Cha Tu Yu Nan Song Jiang Nan Chan Si. 五山十刹图与南宋江南禅寺 . Nanjing: Southeast University Press; 2000.

Zhiyi. The Essentials for Practicing Calming-and-Insight & Dhyāna Meditation 修习止观坐禅法要 .

Zhong, XQ. 钟晓青 . (2015). 初唐佛教图经中的佛寺布局构想 . 美术大观 , (10), 85-89.

Ziporyn, B. Emptiness and Omnipresence: An Essential Introduction to Tiantai Buddhism (World philosophies). Bloomington; Indianapolis: Indiana University Press; 2016.

## 7.2 General bibliography

Ansichten aus Japan China und Siam 普鲁士特使远东风景记 .1864.

Bai, H., & Li, D. Can Tiantai Wutai Shan ji 参天台五台山记 (第 1 版 . ed., Riben ru Hua qiu fa seng ren xing ji jiao zhu cong kan ; 3). Shijiazhuang Shi: Hua shan wen yi chu ban she. 2008.

Bégule, L. L'Abbaye de Fontenay (3. ed. revue. ed., Petites monographies des grands edifices de la France). Paris: H. Laurens.1950.

Benouville, P., & Lauzun, P. Abbaye de Flaran en Armagnac: Description et histoire. Cressé: Régionalismes PyrMonde. 2011.

Bird, I. The Yangtze valley and beyond: An account of journeys in China, chiefly in the province of Sze Chuan and among the Man-tze of the Somo territory (Open Collections Program at Harvard University. Expeditions and discoveries). London: J. Murray. 1899.

Boerschmann Ernst, Old China in Historic Photographs, Mineola, Dover Publications Inc, 1982.

Cold Mountain 寒山 (730-850), translator Red Pine. The Collected Songs of Cold Mountain. Washington: Copper Canyon Press. 2000.

Daian-ji. 大安寺緣起 .

Danxun. Yingchen Huiyilu. 倭虚 (口述) , 大光 (記錄) . 影塵回憶錄 (上) [M]. 南昌: 江西人民出版社,2015.

Deng, Chun. 邓椿 .(宋). 画继 : 10 卷 .

D'Hyères, B. Histoire de l'abbaye Cistercienne de Silvacanne en Provence d'après les documents recueillis.Imprimerie et Lithographie J. Remonet-aubin, 1891.

Ecke Gustav, Chinese Domestic Furniture in Photographs and Measured Drawings, Mineola, Dover

Publications Inc, 1986.

Faber, T. A Danish Architect in China. Hongkong: Christian Mission to Buddhists, Tao Fong Shan Christian Centre. 1994.

Fei, X. Jiangcun jing ji: Zhongguo nong min de sheng huo 江村经济 中国农民的生活 (1st.ed., Shang wu yin shu guan wen ku). Beijing: Shang wu yin shu guan. 2001.

Geil, W. Eighteen capitals of China. Philadelphia; London: J. B. Lippincott. 1911.

Gong, G. Sui Tang Chang'an cheng fo si yan jiu 隋唐长安城佛寺研究 (1st. ed., Kao gu xin shi ye cong shu). Beijing: Wen wu chu ban she. 2006.

Gutiérrez Mozo, María Elia. Arquitectura y composición. San Vicente, Editorial Club Universitario, 2013.

Helge Madsen, H. Prip-Møllers Kina. Arkitekt, missionær og fotograf i 1920erne og 30erne. Denmark: Arkitektens Forlag. 2003.

Karl Gruber, Die Gestalt der Deutschen Stadt.

J. Rudolf Rahn, Geschichte der bildenden Künste in der Schweiz, Zürich.1876.

Jacobsen, W. Der Klosterplan von St. Gallen und die karolingische Architektur: Entwicklung und Wandel von Form und Bedeutung im fränkischen Kirchenbau zwischen 751 und 840. Berlin: Deutscher Verlag für Kunstwissenschaft. 1992.

Liddell, T. China, its marvel and mystery. London: G. Allen. 1909.

Li, Le. 李乐 . 天下四绝 [M]. 北京: 现代出版社, 2014.

Melchers Bernd, Blumen aus dem alten China, Lometsch, 1956.

Loehr, M., & Fogg Art Museum. Chinese landscape woodcuts; from an imperial commentary to the tenth-century printed edition of the Buddhist canon. Cambridge, Mass.: Belknap Press of Harvard University Press. 1968.

Max Weber, General Economic History, trans. Frank H. Knight. London: Allen and Unwin, 1927.

Moon SY. Korean and American Monastic Practices: A Comparative Case Study. Lewiston: Edwin Mellen Press; 1998.

Morrison, H. Travels of a photographer in China, 1933-1946. Hong Kong; New York: Oxford University Press. 1987.

Mumm, A. Ein Tagebuch in Bildern (Harvard College Library preservation microfilm program 2001; 07579). Berlin: Graphische Gesellschaft. 1902.

Nanto Kokusai Bukkyō Bunka Kenkyūjo. 南都大安寺論叢 (Nanto Daianji ronsō) Nara-shi Kyōto-shi Daianji; Hattsubaimoto Rinsen Shoten; 1995.



Nieuhof, J. L'ambassade de la Compagnie Orientale des Provinces Unies vers l'Empereur de la Chine, ou Grand Cam de Tartarie, faite par les Sieurs Pierre de Goyer, et Jacob de Keyser, illustrée d'une tres-exacte description de la Chine: Enrichie d'un grand nombre de tailles douces Le tout recueilli par Jean Nieuhoff, mis en françois, orné, et assorti de mille belles particularitez par Jean le Carpentier, historiographe. 1665.

Porter, B., Johnson, S., & Mingjie. Kong gu you lan: Xun fang xian dai Zhongguo yin shi 空谷幽兰: 寻访现代中国隐士 (1st. ed.). Beijing Shi: Min zu chu ban she. 2001.

Pu, J. 普济 Su, YL edit 苏渊雷点校. Wu deng hui yuan 五灯会元 (1st.ed., Zhongguo fo jiao dian ji xuan kan). Beijing: Zhonghua shu ju: Xin hua shu dian Beijing fa xing suo fa xing; 1984.

Romero Redondo, A., Maria Luzón Núñez de Arenas, L. and Maria Anguita Fontecha, I. Santa María de Huerta. Monasterio Cisterciense. Zaragoza: Industrias Gráficas La Comercial S. A.. 2005.

Staunton, G., Gower, E., Macartney, G., Alexander, W., Hickey, T., Collyer, J., . . . W. Bulmer Co., printer. An authentic account of an embassy from the King of Great Britain to the Emperor of China; including cursory observations made, and information obtained in travelling through that ancient empire, and a small part of Chinese Tartary. Together with a relation of the voyage undertaken on the occasion of His Majesty's ship the Lion, and the ship Hindostan, in the East India company's service, to the Yellow sea, and Gulf of Pekin; as well as of their return to Europe.. London: G. Nicol. 1797.

Wu, Jiang. The Rule of Marginality: Hypothesizing the Transmission of the Mengshan Rite for Feeding the Hungry Ghosts in Late Imperial China. Pacific World, 3rd ser., no.20(2018). PP131-167.

Tokunin.Kōbō Daishi nenpu:[12-kan]. 弘法大师年谱 12 卷 (卷三) . 高野山壽門院 (Kōyasan Jumon'in.1833.

