

Thermocapillary effects during the melting of Phase Change Materials in microgravity: steady and oscillatory flow regimes

P. Salgado Sánchez^{1†}, J. M. Ezquerro¹, J. Fernández²
and J. Rodríguez¹

¹E-USOC, Center for Computational Simulation, Departamento de Aeronaves y Vehículos Espaciales, Escuela Técnica Superior de Ingeniería Aeronáutica y del Espacio, Universidad Politécnica de Madrid, Plaza Cardenal Cisneros 3, 28040 Madrid, Spain

²E-USOC, Center for Computational Simulation, Departamento de Matemática Aplicada a la Ingeniería Aeroespacial, Escuela Técnica Superior de Ingeniería Aeronáutica y del Espacio, Universidad Politécnica de Madrid, Plaza Cardenal Cisneros 3, 28040 Madrid, Spain

(Received xx; revised xx; accepted xx)

A detailed numerical investigation of thermocapillary effects during the melting of Phase Change Materials in microgravity is presented. The phase change transition is analysed for the high Prandtl number material n-octadecane, which is enclosed in a two-dimensional rectangular container subjected to isothermal conditions along the lateral walls. The progression of the solid/liquid front during the melting leaves a free surface, where the thermocapillary effect acts driving convection in the liquid phase. The nature of the flow found during the melting depends on the container aspect ratio, Γ , and on the Marangoni number, Ma . For large Γ , this flow initially adopts a *steady return flow* structure characterised by a single large vortex, that splits into a series of smaller vortices to create a *steady multicellular structure* (SMC) with increasing Ma . At larger values of Ma , this SMC undergoes a transition to oscillatory flow through the appearance of a *hydrothermal travelling wave* (HTW), characterised by the creation of travelling vortices near the cold boundary. For small Γ , the thermocapillary flow at small to moderate Ma is characterised by a SMC that develops initially within a thin layer near the free surface. At larger times, the SMC evolves into a large-scale *steady vortical structure*. With increasing applied Ma , a complex oscillatory mode is observed. This state, referred to as *oscillatory standing wave* (OSW), is characterised by the pulsation of the vortical structure. **Finally, for an intermediate Γ both HTW and OSW modes can be found depending on Ma .**

1. Introduction

Phase Change Materials (PCMs) are of interest in thermal management for their ability to store and release large amounts of energy near the phase transition temperature T_M . PCMs with a suitable value of T_M and a large heat of fusion can be effective in either active or passive thermal control systems and are used in a wide range of applications including air conditioning, electronics, manufacturing, food storage, construction, and the clean energy industry.

Space missions are a particularly interesting area for PCM applications because significant (undesired) temperature variations can result from the cycles of radiation exposure experienced by orbiting spacecraft or the waste heat generated by onboard systems. There is a long history of PCM use in space missions going back to the Apollo 15 Lunar

† Email address for correspondence: pablo.salgado@upm.es

Rover Vehicle, Skylab SL-1, and the Venera 8-10 missions of the Soviet Union (Lane 1983; Creel 2007). Future initiatives are also expected to benefit from the capability of PCMs to provide simple, passive and efficient thermal control. The ESA Moon Village programme, for example, will likely require managing the extreme temperature differences between the lunar day and night (Williams *et al.* 2017).

Among the range of possible materials with appropriate operating temperatures for space applications, organic PCMs like alkanes are attractive due to their stability. Their effectiveness can be limited, however, by low thermal conductivity and the resulting lag in response time. One strategy for reducing response time of the PCM device is to modify the effective thermal conductivity through the addition of more conductive material (Cabeza *et al.* 2002; Ettouney *et al.* 2004; Agyenim *et al.* 2009; Fernandes *et al.* 2012; Atal *et al.* 2016). However, with the exception of the (so-called) nano-enhanced phase change materials (NePCM) that use dispersed nanoparticles (Hosseinizadeh *et al.* 2012; Dhaidan *et al.* 2013), this approach tends to increase the associated mass and/or volume budget, which is a crucial consideration in space applications.

Even without changing conductivity, the existence of convective flows in the liquid phase can significantly enhance the performance of the PCMs. In microgravity, where buoyancy-driven convection cannot be exploited (Gau & Viskanta 1986; Roy & Sengupta 1990; Wang *et al.* 1999; Khodadadi & Zhang 2001; Shokouhmand & Kamkari 2013; Dhaidan & Khodadadi 2015), the thermocapillary effect has been proposed as a simple alternative to improve heat transfer properties since, if the design includes a free surface, the temperature gradient inherent to the operation of the PCM will induce variations in surface tension that will generate convective flow. Furthermore, the presence of this PCM-gas boundary indirectly alleviates the problem of disruptive pressure changes (and related bubbles/voids) associated with the thermal expansion of the material during its melting/solidification; the gas naturally accommodates the change in volume.

During the last few decades, thermocapillary-driven flows have attracted the interest of the scientific community in the context of many important technological processes such as crystal growth (Brice 1986), combustion (Sirignano & Glassman 1970), welding (Samanta 1987; Mills *et al.* 1998), and in other areas like the migration of bubbles (Subramanian 1992) or the spreading of drops (Erhard & Davis 1991). During crystal growth, it is now generally understood that fluid flows can interact with the solidification front, resulting in complex dynamics that critically affect the crystal quality. Such analyses have focused, for simplicity, on either cylindrical (i.e., liquid bridges or annular domains) or rectangular geometry, which is the case of interest here.

In rectangular containers, which presume the two-dimensional behaviour typical of large Prandtl number (Pr) liquids (Smith & Davis 1983), it is the stream-wise aspect ratio Γ the key parameter selecting the character of the flow. For large cavities ($\Gamma \gg 1$), the basic steady flow is the *return flow* solution, obtained by Sen & Davis (1982) using asymptotic techniques in the limit of $\Gamma^{-1} \rightarrow 0$. The validity of this solution was later checked against numerical simulations in large but finite containers by Strani *et al.* (1983), who also explored the case of deeper containers.

Motivated by the seminal experiments of Schwabe & Scharmann (1979); Chub & Wuest (1979) that observed oscillatory thermocapillary flows for the first time, Smith & Davis (1983) analysed the stability of the return flow solution using linear theory. They demonstrated the existence of oscillatory oblique (i.e., three-dimensional) *hydrothermal waves* propagating from the cold side of the cavity, and investigated their properties with varying Pr. For liquids of large Pr, these hydrothermal waves were shown to be (nearly) two-dimensional and supported by vertical gradients in the liquid domain (Smith 1986).

In the opposite case of $\Gamma \sim \mathcal{O}(1)$, the flow is generally dominated by a single vortex

(Zebib *et al.* 1985; Carpenter & Homsy 1990). The numerical work of Peltier & Biringen (1993) was the first to show oscillatory behaviour in a rectangular two-dimensional domain with $\Gamma \simeq 2.3$ for a moderate Pr of 6.8. From their results, one can conclude that the lateral heated boundaries have a strong stabilising effect on the onset of two-dimensional oscillations.

Much research continues to be done on thermocapillary flows since these pioneering investigations (see e.g., Shevtsova *et al.* (2003); Kuhlmann & Albensoeder (2008), and references therein). However, only a handful of theoretical studies (that the authors are aware of) have considered the coupling between thermocapillary flows and the dynamic boundary conditions due to the *advancing* (moving) solid/liquid front during melting or solidification in microgravity. In this work, we [aim to extend the previous knowledge by investigating](#) this problem numerically for the melting of a PCM material in weightless conditions. A systematic study is conducted in rectangular containers without considering the contribution of natural convection. Attention is focussed on the effect of applied temperatures and container geometry, which are typified by the Marangoni number and aspect ratio.

In this work, the thermocapillary flows that appear in the liquid phase during melting are considered from the perspectives of pattern formation and fluid mechanics. [This paper shares with the work of Strani *et al.* \(1983\); Peltier & Biringen \(1993\) an emphasis on the qualitative analysis of the flow, including the numerical determination of the critical onset for oscillatory convection, but with the increased complexity of a time-dependent geometry, inherent to dynamic nature of any solid/liquid phase change. In the large aspect ratio limit, the recent work of Lappa \(2018\) on the formation of hydrothermal waves in a large container during the solidification of succinonitrile \(SCN\) is one of the most relevant points of comparison.](#)

Although not directly focused on pattern formation aspects of thermocapillary flows, the recent numerical work of Madruga & Mendoza (2017*a,b*) is relevant and the first to suggest the positive effect of thermocapillary convection on heat transport during the melting of PCMs in microgravity. These predictions were recently confirmed by the parabolic flight experiments of Ezquerro *et al.* (2019, 2020), which for the first time observed the melting of n-octadecane in rectangular containers under the presence of a free-surface. Salgado Sanchez *et al.* (2020) then complemented these results by experimentally and numerically examining the effect of the container aspect ratio for $\Gamma = 1\text{--}1.66$, i.e., near the $\Gamma \sim \mathcal{O}(1)$ limit. The present work extends these results to $\Gamma \gg 1$, further tracing the transition at intermediate aspect ratios. As noted above, only a handful of theoretical studies (see, e.g., Humphries & Griggs (1977); Giangi *et al.* (2002); Swanson & Birur (2003); Xiaohong *et al.* (2012); and references therein) considered the influence of thermocapillary flows on phase changes and, to the best of our knowledge, none of them have looked at this complex problem from a pattern formation perspective.

The manuscript is structured as follows. In §2, the modelling of the phase change process is summarised. We use an enthalpy-porosity-based formulation of the Navier-Stokes equations to solve the phase change dynamics. The convergence of the numerical solutions is discussed in §2.1. In §3 and §4, the different thermocapillary flow regimes observed during the phase change are analysed [for selected](#) values in the limiting cases of large and small aspect ratio containers, respectively. These regimes are then summarised with a Ma vs Γ instability diagram in §5, including a brief description of the transition region for intermediate Γ . Final conclusions are offered in §6.

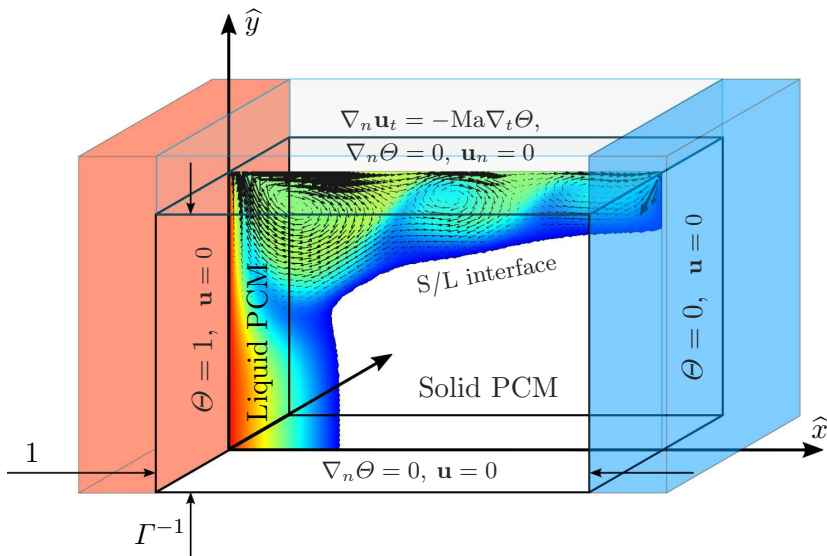


FIGURE 1. Sketch of the two-dimensional setup for the numerical model: a fixed $1 \times \Gamma^{-1}$ rectangular volume of high Prandtl number PCM ($\text{Pr} = 52.53$) is subjected to a controlled solid-liquid phase transition by applying constant (dimensionless) temperatures $\Theta = 0$ and $\Theta = 1$ on opposite lateral walls. The phase change occurs in the presence of an air layer along the upper boundary of the PCM, where the progressive melting of the solid creates a liquid-air interface. It is the Marangoni force associated with the temperature variation along this thermocapillary interface that drives thermocapillary flows in the liquid phase, modifying the phase change dynamics. The remaining boundary conditions are as indicated: adiabatic for the temperature field, and no-slip for the velocity field.

2. Mathematical formulation

The solid/liquid phase transition of a (two-dimensional) rectangular PCM volume is considered under weightless conditions. The phase change is driven by the application of constant temperatures on opposite lateral walls, and it occurs in the presence of an air layer in contact with the PCM along its upper boundary. The progressive melting of the solid phase leaves a liquid-air interface that is not isothermal and supports a variation in surface tension. This surface tension gradient is the driving force for thermocapillary convection in the liquid phase, which modifies the liquid dynamics as well as the heat transport rate during the phase change transition. A sketch of the setup for the numerical model is illustrated in figure 1, including the prescribed boundary conditions (written in dimensionless variables).

We use the following characteristic values to rescale length, time, and temperature

$$\begin{pmatrix} \mathbf{x} \\ t \\ T - T_M \end{pmatrix} \rightarrow \begin{pmatrix} \hat{\mathbf{x}} L \\ \tau (L^2/\alpha) \\ \Theta (T_H - T_M) \end{pmatrix}, \quad (2.1)$$

and the physical properties of the liquid phase for density, viscosity, heat capacity at

constant pressure and thermal conductivity

$$\begin{pmatrix} \rho \\ \mu \\ c_p \\ k \end{pmatrix} \rightarrow \begin{pmatrix} \hat{\rho} \rho_L \\ \hat{\mu} \mu_L \\ \hat{c}_p c_{pL} \\ \hat{k} k_L \end{pmatrix}, \quad (2.2)$$

where L is the length of the container, T_H the applied temperature along the heated wall, T_M the melting temperature and $\alpha = k_L/(\rho_L c_{pL})$ the liquid thermal diffusivity. Since the interior dimensions of the container are $L \times H$ (length \times height), the horizontal dimension after rescaling is unity while the container height is the inverse of its aspect ratio $\Gamma = L/H$.

The dimensionless Navier-Stokes equations for laminar and incompressible flow (Landau & Lifshitz 1987) describe the conservation of momentum and mass in the liquid phase

$$\hat{\rho} \left(\frac{\partial \mathbf{u}}{\partial \tau} + (\mathbf{u} \cdot \nabla) \mathbf{u} \right) = -\nabla p + \text{Pr} \hat{\mu} \Delta \mathbf{u}, \quad (2.3a)$$

$$\nabla \cdot \mathbf{u} = 0, \quad (2.3b)$$

where \mathbf{u} and p are the (dimensionless) velocity and pressure fields, and the Prandtl number is

$$\text{Pr} = \frac{\mu_L}{\rho_L \alpha}.$$

During the solid/liquid transition, the absorbed latent heat depends on the fraction of melted PCM through the product $f \rho c_L$, where c_L is the heat of fusion. Energy and momentum are coupled through this liquid fraction f , which can be expressed as a field depending on temperature. We model this dependence using the following step function (smoothed for numerical stability):

$$f(T) = \begin{cases} 0 & T - T_M < -\delta_T/2, \\ \frac{1}{2} + \frac{T - T_M}{2\delta_T} + \frac{1}{2\pi} \sin\left(\frac{(T - T_M)\pi}{\delta_T}\right) & |T - T_M| \leq \delta_T/2, \\ 1 & T - T_M > \delta_T/2, \end{cases} \quad (2.4)$$

which changes from 0 to 1 (symmetrically) near T_M . The small temperature δ_T characterises the interval where solid and liquid phases may coexist, the so-called *mushy region* (Egolf & Manz 1994). With the selection of n-octadecane for the PCM, as in recent microgravity experiments (Ezquerro *et al.* 2019, 2020; Salgado Sanchez *et al.* 2020), the values of δ_T reported in the literature [see, e.g., Ho & Gaoe (2009); Velez *et al.* (2015)] range from 1–4 K, depending on the experimental technique and the purity of the sample. We anticipate the choice of $\delta_T = 1$ K, consistent with Salgado Sanchez *et al.* (2020).

The conservation of thermal energy includes both the contribution of sensible and latent heats

$$\hat{\rho} \hat{c}_p \left(\frac{\partial \Theta}{\partial \tau} + \mathbf{u} \cdot \nabla \Theta \right) = \hat{k} \Delta \Theta - \text{Ste}^{-1} \hat{\rho} \left(\frac{\partial f}{\partial \tau} + \mathbf{u} \cdot \nabla f \right), \quad (2.5)$$

where Ste refers to the Stefan number

$$\text{Ste} = \frac{c_{pL}(T_H - T_M)}{c_L}.$$

The system is considered to be continuous with properties that depend on the local temperature and have appropriate limits for the solid and liquid phases. All physical properties of the PCM are expressed using the liquid fraction f as follows (subscripts L and S denote liquid and solid, respectively):

$$\widehat{\rho} = \widetilde{\rho} + (1 - \widetilde{\rho}) f, \quad (2.6a)$$

$$\widehat{\mu} = \widetilde{\mu} + (1 - \widetilde{\mu}) f, \quad (2.6b)$$

$$\widehat{c}_p = \widetilde{c}_p + (1 - \widetilde{c}_p) f, \quad (2.6c)$$

$$\widehat{k} = \widetilde{k} + (1 - \widetilde{k}) f, \quad (2.6d)$$

where

$$\widetilde{\rho} = \frac{\rho_S}{\rho_L}, \quad \widetilde{\mu} = \frac{\mu_S}{\mu_L}, \quad \widetilde{c}_p = \frac{c_{pS}}{c_{pL}}, \quad \widetilde{k} = \frac{k_S}{k_L}.$$

The parameter μ_S is taken as a virtual solid viscosity with a value several orders of magnitude greater than μ_L (Voller *et al.* 1987). This value is selected from a convergence test of the numerical simulations and is required to be such that the solid velocity effectively vanishes; see §2.1 for details.

The thermocapillary effects along the free surface are considered in the linear approximation, with the interfacial tension depending on temperature as

$$\frac{\sigma}{\sigma_0} = 1 - \text{Ca} \Theta. \quad (2.7)$$

Here, σ is the surface tension measured with respect a reference value σ_0 at T_M , and Ca is the capillary number

$$\text{Ca} = \frac{|\gamma| (T_H - T_M)}{\sigma_0}$$

characterising the variation of surface tension with temperature through the thermocapillary coefficient $\gamma = \partial\sigma/\partial T$. This temperature dependence provides the driving force for thermocapillary convection by pulling the liquid along the surface from regions of lower to higher surface tension. Along the solid PCM-gas interface, where $\Theta \leq 0$, we set $\gamma = 0$ (Ca = 0).

When a temperature gradient along the free surface generates thermocapillary convection, there is a balance between pressure, viscous stresses and surface tension. For simplicity, we assume a perfectly flat interface so that the only dependence on surface tension is through γ . The balance therefore becomes

$$\nabla_n \mathbf{u}_t = -\text{Ma} \nabla_t \Theta, \quad (2.8)$$

where the subscripts n and t refer to the normal and tangential components, and Ma stands for the Marangoni number

$$\text{Ma} = \frac{|\gamma| L (T_H - T_M)}{\mu_L \alpha},$$

which characterises the relative importance for heat transport of the thermocapillary effect compared to thermal diffusion.

The complete set of boundary conditions for the temperature and velocity fields is as follows.

(a) At the (left and right) lateral walls $\widehat{x} = 0, 1$, isothermal and no-slip conditions are applied:

$$\Theta = 1, 0; \quad \mathbf{u} = 0. \quad (2.9)$$

Melting temperature, T_M	28 °C
Liquid density, ρ_L	780 kg/m ³
Solid density, ρ_S	865 kg/m ³
Specific latent heat, c_L	243.5 kJ/kg
Liquid specific heat capacity, c_{pL}	2196 J/(kg K)
Solid specific heat capacity, c_{pS}	1934 J/(kg K)
Liquid conductivity, k_L	0.148 W/(m K)
Solid conductivity, k_S	0.358 W/(m K)
Dynamic viscosity, μ_L	3.541×10^{-3} Pa s
Thermocapillary coefficient, γ	-8.44×10^{-5} N/(m K)

TABLE 1. Physical properties of n-octadecane paraffin, reproduced from Alawadhi (2008); Dhaidan *et al.* (2013); Lide (2014).

Ma	Ste	Γ	Pr	$\tilde{\rho}$	\tilde{k}	\tilde{c}_p
6207–248298	0.009–0.361	1.5–22.8	52.53	1.11	2.42	0.88

TABLE 2. Nondimensional parameters explored, corresponding $T_H - T_M = \Delta T \in [1, 40]$ K, $H \in [0.9875, 15]$ mm and the selection of n-octadecane.

(b) At the bottom wall $\hat{y} = 0$, adiabatic and no-slip conditions are applied:

$$\nabla_n \Theta = 0; \quad \mathbf{u} = 0. \quad (2.10)$$

(c) At the free surface $\hat{y} = \Gamma^{-1}$, the balance between viscous and thermocapillary stresses(2.8) is assumed together with adiabatic and slip velocity conditions:

$$\nabla_n \mathbf{u}_t = -\text{Ma} \nabla_t \Theta; \quad \nabla_n \Theta = 0; \quad \mathbf{u}_n = 0. \quad (2.11)$$

These boundary conditions are indicated in figure 1.

We solve the dynamics of the phase change for the organic paraffin n-octadecane, whose physical properties are listed in table 1. This choice fixes the following nondimensional parameters:

$$\text{Pr} = 52.53, \quad \tilde{\rho} = 1.11, \quad \tilde{k} = 2.42, \quad \tilde{c}_p = 0.88.$$

Taking a similar approach as Peltier & Biringen (1993), Ma and Ste are varied simultaneously through the selection of the applied temperature T_H , while Γ is independently varied through the container height H . Recall that, for simplicity, the cold side is maintained at $\Theta = 0$ ($T_C = T_M$). The range of dimensionless parameters explored is summarised in table 2.

Experimental (Montanero *et al.* 2008) and numerical (Shevtsova *et al.* 2008) analyses of liquid bridges have reported that the free surface deformation caused by thermocapillary flows is proportional to Ca. For the present work on n-octadecane, which has a surface tension at 30 °C of approximately $\sigma_0 \simeq 27.54$ mN/m (Camp 1977), the Capillary number always satisfies $\text{Ca} \leq 0.12$ and the free surface deformation is expected to be on the order of microns (Montanero *et al.* 2008). We have used $T_H - T_M = \Delta T \leq 40$ K and the thermocapillary coefficient reported in table 1 for the previous calculation.

Furthermore, previous analytical treatments in rectangular cavities (Sen & Davis 1982; Strani *et al.* 1983) have found a negligible effect of the interface deformation on the

qualitative aspects of the flow structure, which is the focus of the present manuscript. The main error associated with the consideration of a fixed rectangular domain is likely related to the different volumes occupied by the solid and liquid phases. However, the recent work of Salgado Sanchez *et al.* (2020) demonstrated good agreement between experiments and analogous simulations using a fixed rectangular volume, which provides support for this simplifying assumption.

Finally, the assumption of two-dimensional dynamics is supported by the high Prandtl number of the PCM selected, for which thermocapillary flows were shown to be essentially two-dimensional (Smith & Davis 1983; Peltier & Biringen 1993; Kuhlmann & Albensoeder 2008), while the use of perfectly adiabatic boundaries is taken for consistency with previous analyses [see, e.g., Sen & Davis (1982)].

We use COMSOL Multiphysics to solve the governing equations (2.3)–(2.6) with the set of boundary conditions (2.9)–(2.11) in dimensional variables using the Finite Element Method. The initial condition for the (dimensional) temperature field is 25 °C ($< T_M$) at which the PCM is in a solid state and thus $\mathbf{u} = 0$. This introduces a mismatch with respect to the applied boundary conditions for this field, which can be approached numerically by using an inconsistent initialisation technique that relies on a Backward Euler method for one step. We note that this initial temperature is selected well below $T_M - \delta_T/2$ to account for the complete heat of fusion during the phase change. The subsequent time evolution is effected with a Backward Differentiation Formulae (BDF) scheme together with streamline (Harari & Hughes 1992) and crosswind (Codina 1993) stabilisation techniques to avoid spurious numerical oscillations.

Additional details of the numerical method, including the criteria used for selecting the maximum mesh size and the numerical parameter μ_S are discussed hereafter.

2.1. Convergence of the numerical solutions

Since the main objective of the present work is to analyse the effect of thermocapillary convection during the PCM melting, it is natural to use the melting time at which the liquid fraction is 100 % as an indicative value for testing numerical convergence.

The convergence of the numerical simulations is examined for three different mesh choices in table 3. The applied Marangoni number is fixed at $Ma = 124170$, corresponding to $Ste = 0.180$ and $\Delta T = T_H - T_M = 20$ K. Convergence is tested for two aspect ratios (a) $\Gamma = 12$ and (b) $\Gamma = 2.25$, corresponding to $H = 1.875, 10$ mm, which are representative of the dynamics in the large and small aspect ratio limits[†]. Meshes are compared and characterised by the maximum element size (as a fraction of the container length L), degrees of freedom (DoF), simulation cost (in time), melting time to achieve 50 and 100 % liquid fractions τ_{melt} , and deviations with respect to the finest mesh used.

The associated time evolutions of the liquid area for each mesh are illustrated in figure 2. In both cases, meshes a2 and b2 (highlighted by bold symbols in the table and blue curves in the figure) are found to offer a good compromise between reduced computational cost and numerical accuracy. The level of numerical error for the final melting time with these choices is shown to be below 1 %, which is acceptable given the remaining uncertainties in comparing to experiments (not considered in this work). Note that these results are consistent with the recent work of Salgado Sanchez *et al.* (2020), where numerical simulations were validated against experiments after selecting a similar mesh size.

Using the previously selected meshes, the sensitivity of numerical simulations to

[†] These values are selected to test convergence in the oscillatory regime; see §3.2 and §4.2 for further details.

(a) $\text{Ma} = 124170$, $\Gamma = 12$

Mesh #	Max. size ($\times L/67.5$)	Mesh DoF	Simulation time	$\tau_{\text{melt},\%}$ (-)	Deviation (%)
a1	1	3316	2 h 10 min	(0.0517, 0.1560)	(-4.71, 4.10)
a2	2/3	6865	3 h 8 min	(0.0526, 0.1485)	(-3.14, -0.91)
a3	1/2	11703	4 h 4 min	(0.0543, 0.1499)	—

(b) $\text{Ma} = 124170$, $\Gamma = 2.25$

Mesh #	Max. size ($\times L/67.5$)	Mesh DoF	Simulation time	$\tau_{\text{melt},\%}$ (-)	Deviation (%)
b1	2	3716	8 h 36 min	(0.1519, 0.7919)	(-10.82, -5.93)
b2	1	13021	16 h 28 min	(0.1647, 0.8430)	(-3.30, 0.12)
b3	2/3	28258	30 h 36 min	(0.1703, 0.8419)	—

TABLE 3. Results of the mesh convergence test for numerical simulations in (a) large aspect ratio $\Gamma = 12$ and (b) small aspect ratio $\Gamma = 2.25$ containers. Selected meshes a2 and b2 are highlighted in bold, with deviations in the melting time τ_{melt} for 50 and 100 % liquid fractions, calculated with respect to meshes a3 and b3.

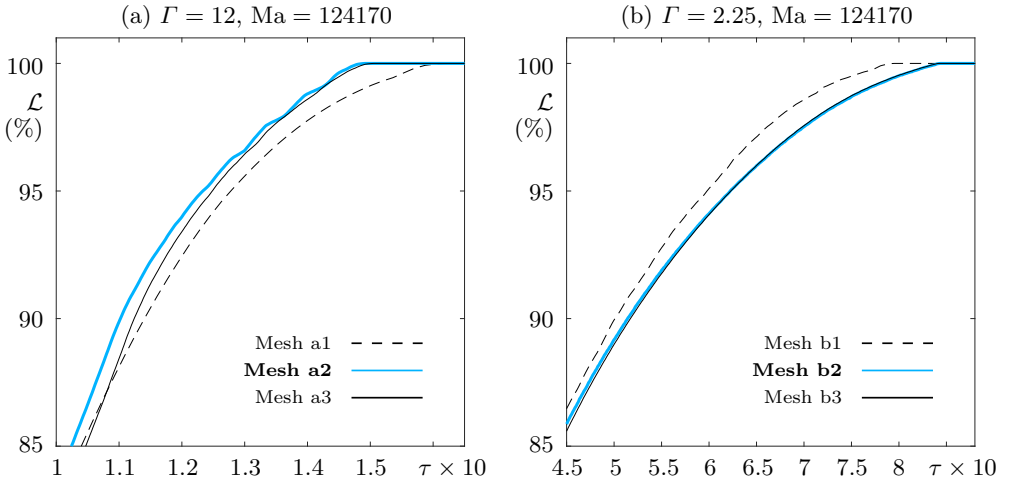


FIGURE 2. Mesh convergence test for the evolution of the liquid fraction \mathcal{L} . Simulations are performed with $\text{Ma} = 124170$ in (a) $\Gamma = 12$ and (b) $\Gamma = 2.25$ containers to test convergence in the large and small aspect ratio limits, respectively. Selected meshes are plotted in blue and highlighted in bold in the legends.

variations in the virtual solid viscosity μ_S is analysed. Table 4 contains the results for $\Gamma = 2.25$ and three different virtual solid viscosities $\mu_S = 10$, 10^3 , 10^5 Pa s. We select $\mu_S = 10^3$ Pa s since deviations remain on the order of 1 % and change very little compared to the large steps (by two orders of magnitude) taken in μ_S . This value was also selected in Salgado Sanchez *et al.* (2020).

In the remainder of this paper, we use $\mu_S = 10^3$ Pa s and $\delta_T = 1$ K, together with a

Virtual solid viscosity, μ_S (Pa s)	$\tau_{\text{melt, \%}}$ (-)	Deviation (%)
10^1	0.8519	1.05
10^3	0.8430	—
10^5	0.8350	-0.95

TABLE 4. Results of the convergence test for the virtual solid viscosity μ_S . The mesh used is b2 ($\Gamma = 2.25$) and the deviation in the total melting time τ_{melt} is calculated with respect to the selected value $\mu_S = 10^3$ Pa s.

maximum mesh size of $(2/3)\mathcal{S}$ if $\Gamma \geq 4.5$, and \mathcal{S} if $\Gamma < 4.5$ where $\mathcal{S} = L/67.5$. The time steps are set to values between $\Delta t \in [0.0005, 0.01]$ s depending on the applied Ma, and can be automatically reduced for numerical stability according to the Courant-Friedrichs-Levy (CFL) convergence condition.

In the following sections, numerical results are presented in dimensionless variables, accompanied by the associated dimensional values (given between brackets) to ease the physical interpretation.

3. Thermocapillary flows during the phase change in large aspect ratio containers

The phase change process is analysed first in large aspect ratio containers. Qualitatively similar results are obtained for $\Gamma \gtrsim 7$. We select $\Gamma = 12$ as a representative case to illustrate the different dynamics that can occur during the phase transition depending on the applied Ma. The associated thermocapillary flow can be either steady or oscillatory, which is discussed in detail in the following sections.

3.1. Steady flow regime: steady return flow (SRF) and steady multicellular structures (SMC)

In figure 3, four snapshots show the time evolution of the PCM melting process for $\Gamma = 12$ ($H = 1.875$ mm, $L = 22.5$ mm) and a (small) applied Ma = 9311 (Ste = 0.014, $\Delta T = T_H - T_M = 1.5$ K). The colourmap shows the temperature field between $\Theta = 0$ ($T = T_M$, dark blue) and $\Theta = 1$ ($T = T_M + 1.5$ K, dark red), with flow streamlines (black solid lines) superimposed.

At early times, the phase change is essentially driven by thermal diffusion. As shown at $\tau = 0.0171$, the isotherms are aligned vertically along the container except in a small region near the free surface. In this region, thermocapillary forces generate a small vortex (not included in the snapshot) that (locally) accelerates the phase change and causes the solid/liquid front to progress faster. As time passes and the solid/liquid front advances, this vortex progressively grows in size until it spans the container height. By $\tau = 0.3414$, the vortex is fully extended vertically and so is its effect on the solid/liquid front and the temperature field.

The progressive melting of the solid changes the effective aspect ratio experienced by the liquid phase. The initial vortex stretches as the solid/liquid front penetrates the cell but maintains the features of the *steady return flow* (SRF) structure, which is typical of thermocapillary-driven dynamics in large aspect ratio containers subjected to small

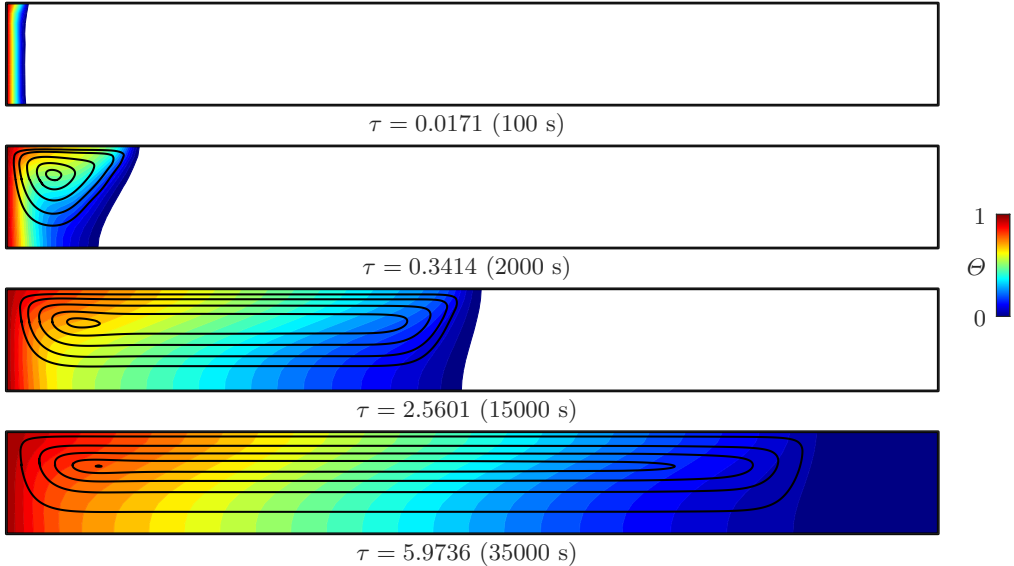


FIGURE 3. Snapshots (times indicated) showing the evolution of the PCM melting for $\Gamma = 12$ ($H = 1.875$ mm, $L = 22.5$ mm) and a (small) applied $\text{Ma} = 9311$ ($\text{Ste} = 0.014$, $\Delta T = 1.5$ K). The colourmap shows the temperature field with flow streamlines (black solid lines) superimposed. The solid volume is melted completely by $\tau_{\text{melt}} = 5.8704$ (34395 s). During the process, the thermocapillary flow in the liquid phase (coloured) exhibits a *steady return flow* (SRF) structure, characterised by a single large vortex that extends along the length of the cell.

Ma (Sen & Davis 1982). The slow evolution of the solid/liquid front continues until $\tau_{\text{melt}} = 5.8704$ (34395 s), when the solid is completely melted.

Upon comparing the final SRF structure [once the melting process is completed](#) (see the snapshot at $\tau = 5.9736$) to the analytical solution obtained by Sen & Davis (1982) or Strani *et al.* (1983), where the streamlines are more similar on the left and right sides, we may conclude that the temperature dependence of viscosity defined by equation (2.6b) effectively damps fluid motion in the mushy region near the cold side. This leads to the visible asymmetry (with respect to left-right reflection through the midline). Since δT is fixed, the relative extension of this mushy region, where the fluid velocity vanishes, increases with decreasing applied temperature difference.

The unicellular SRF structure exists over a certain interval of Ma . As soon as the applied Ma surpasses a critical value, this single vortex state loses stability to a (so-called) *steady multicellular structure* (SMC), which is characterised by a series of small steady vortices — aligned at $\hat{y} \simeq (2/3)\Gamma^{-1}$ — that spread outwards from the hot boundary. The intensity of these vortices decays (exponentially) inwards (Shevtsova *et al.* 2003).

In figure 4, six snapshots show the time evolution of the PCM subjected to a higher (moderate) $\text{Ma} = 77593$ ($\text{Ste} = 0.113$, $\Delta T = 12.5$ K), in the same container of aspect ratio $\Gamma = 12$ ($H = 1.875$ mm, $L = 22.5$ mm). The colourmap shows the temperature field between $\Theta = 0$ ($T = T_M$, dark blue) and $\Theta = 1$ ($T = T_M + 12.5$ K, dark red), with the flow streamlines (black solid lines) superimposed.

As in the case of $\text{Ma} = 9311$, the phase change is essentially driven by thermal diffusion at the beginning. Compared to figure 3, the applied Ma is roughly one order of magnitude greater, resulting in a stronger thermocapillary effect. In fact, the initial vortex near the free surface substantially accelerates the progression of the solid/liquid front and rapidly

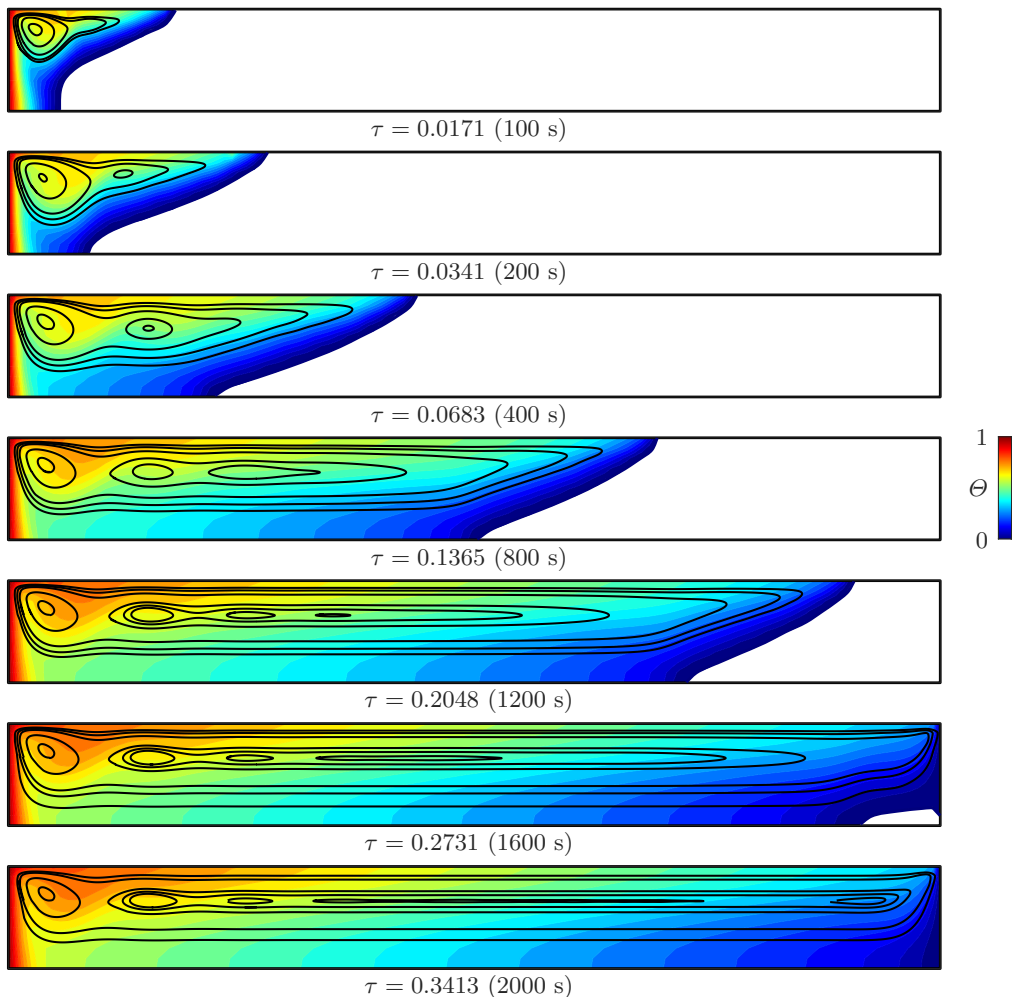


FIGURE 4. Snapshots (times indicated) showing the evolution of the PCM melting for $\Gamma = 12$ ($H = 1.875$ mm, $L = 22.5$ mm) and a (moderate) applied $\text{Ma} = 77593$ ($\text{Ste} = 0.113$, $\Delta T = 12.5$ K). The colourmap shows the temperature field with flow streamlines (black solid lines) superimposed. The solid volume is melted completely by $\tau_{\text{melt}} = 0.2859$ (1675 s). During this process, the thermocapillary flow in the liquid phase (coloured) shows a *steady multicellular structure* (SMC), which involves a series of small vortices — aligned at $\hat{y} \simeq (2/3)\Gamma^{-1}$ — that spread outwards from the hot boundary. Their intensity decays (exponentially) towards the centre of the container.

splits into two smaller vortices. Again, as the melting progresses, the effective aspect ratio of the liquid phase increases and new vortices appear in the flow. Note that, although the vortical structure evolves until it occupies the complete domain at the end of melting, individual vortices reach a steady location prior to that.

The final flow configuration is similar to that described by Shevtsova *et al.* (2003) at small to moderate Ma , where thermocapillary-buoyant convection was analysed in a large container with $\Gamma = 24.7$. These authors explained the transition from SRF to SMC in terms of the influence of the hot endwall, where a stationary wave decaying exponentially towards the centre of the container was generated. We note that Shevtsova *et al.* (2003)

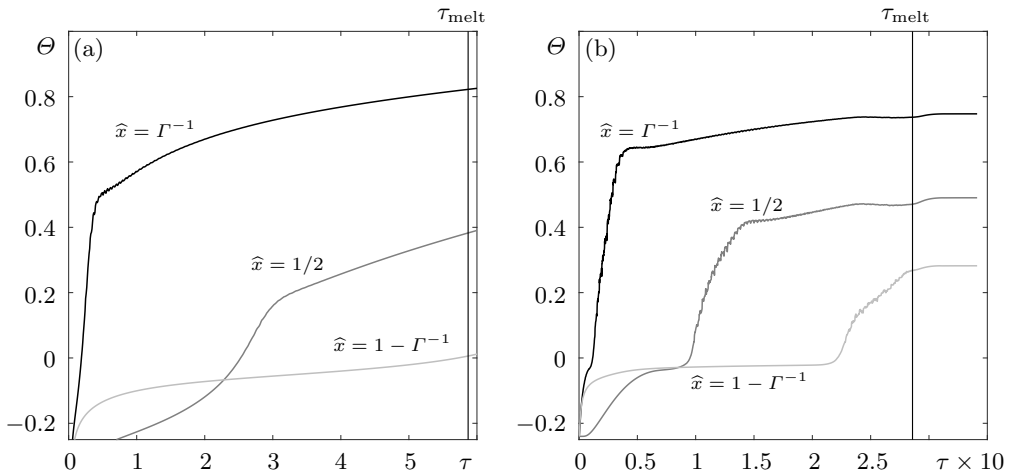


FIGURE 5. Dimensionless temperature Θ measured at selected points. The probes are distributed along the length of the PCM at horizontal positions $\hat{x} = \Gamma^{-1}$ (black), $1/2$ (dark grey) and $1 - \Gamma^{-1}$ (light grey, labelled in the panels) with the same vertical height $\hat{y} \simeq (2/3)\Gamma^{-1}$. The applied Marangoni numbers are (a) $\text{Ma} = 9311$ ($\Delta T = 1.5$ K, as in figure 3) and (b) $\text{Ma} = 77593$ ($\Delta T = 12.5$ K, as in figure 4), where SRF and SMC solutions are found in the liquid phase, respectively. The dimensionless time for the melting completion τ_{melt} is indicated by vertical lines.

did not analyse the case of zero gravity but used strictly positive values of the dynamic Bond number, defined as $\text{Bo}_{\text{dyn}} = (\rho_L g \beta H^2)/|\gamma|$, where g is the vertical gravitational acceleration and β is the liquid compressibility. Their results, however, suggested that this flow structure would persist in the limit $g \rightarrow 0$ ($\text{Bo}_{\text{dyn}} \rightarrow 0$).

For this applied Ma , the solid volume is melted completely by $\tau_{\text{melt}} = 0.2859$ (1675 s), which is one order of magnitude faster than the time observed in figure 3. The shape of the solid/liquid front, on the other hand, is more inclined than in figure 3, which is consistent with the results of Lappa (2018), where this inclination was shown to depend on Ma , with more inclined solidification fronts observed with increasing thermocapillary effects.

Despite the fact that the phase change process is dynamic, with the solid/liquid front evolving along with the associated thermocapillary flow in the liquid, we refer to the above solutions as *steady* flow structures. This is justified by the different timescales involved. The steady modes are nearly constant over timescales sufficiently short compared to that of the solid/liquid front evolution. **As it will be described below, the oscillatory modes have a period much shorter than the time for complete melting (also referred to as melting time, τ_{melt}), i.e., the required time to melt the solid phase completely.** This separation of timescales allows us to consider that the phase change is quasisteady, with the oscillatory thermocapillary flow insensitive to the change in position of the solid/liquid front over one oscillation period.

This quasisteady character is reflected in the time series of the temperature field at different measurement locations along the cell. In figure 5, the dimensionless temperature Θ measured by three probes placed at the horizontal positions $\hat{x} = \Gamma^{-1}$ (black), $1/2$ (dark grey) and $1 - \Gamma^{-1}$ (light grey, labelled in the panels) along the PCM length and $\hat{y} = (2/3)\Gamma^{-1}$ are shown. The applied Marangoni numbers are (a) $\text{Ma} = 9311$ ($\Delta T = 1.5$ K, as in figure 3) and (b) $\text{Ma} = 77593$ ($\Delta T = 12.5$ K, as in figure 4). The associated

dimensionless times for the melting completion τ_{melt} are indicated by vertical lines in both panels.

In addition to revealing the steady or oscillatory nature of the thermocapillary flow, the temperature profiles provide information about the evolution of the solid/liquid front at $\hat{y} = (2/3)\Gamma^{-1}$, which can be inferred from the times at which the local temperature crosses $\Theta = 0$, i.e., when the solid/liquid front passes this point. The time τ_{melt} can be determined from the approach to a final steady state, as seen most clearly in panel (b).

To summarise, the steady thermocapillary flow regime observed during the solid/liquid transition depends on Ma. At low Ma, the features are those of the SRF, with a large vortex stretching from the hot to the cold boundary. With increasing Ma, this large vortex undergoes a transition to an SMC consisting of various vortices aligned at $\hat{y} \simeq (2/3)\Gamma^{-1}$, with intensity decaying exponentially with distance from the hot wall (Shevtsova *et al.* 2003). The number of vortices depends on Ma and Γ . Compared to the work of Bergeon *et al.* (1998) in a fix rectangular geometry, where the selection of the number of vortices near the onset of the SMC mode was shown to depend only on Γ , the effective aspect ratio of the liquid phase here evolves during the melting process, which couples the effects of Ma and Γ during this transient evolution. Further increase of the applied Ma induces a transition to an oscillatory mode, as explained below.

3.2. Oscillatory flow regime: the hydrothermal travelling wave (HTW)

In figure 6, the evolution of the PCM phase change in a $\Gamma = 12$ container subjected to a (large) $\text{Ma} = 186224$ ($\text{Ste} = 0.271$, $\Delta T = 30$ K), is illustrated through selected snapshots. The colourmap shows the temperature field between $\Theta = 0$ ($T = T_M$, dark blue) and $\Theta = 1$ ($T = T_M + 30$ K, dark red), with flow streamlines (black solid lines) and the $\Theta = 0.5$ isotherm (white line) superimposed.

At the very beginning of the phase change process, heat transport is dominated by thermal diffusion. As soon as the solid/liquid front separates enough from the hot boundary, the thermocapillary effect drives convection near the free surface, as in figure 4. In this case, however, the local melting near the surface is fast enough that two different regions can be already distinguished in the liquid at $\tau = 0.0034$: a thermocapillary-dominated region in the vicinity of the free surface, and a conductive-dominated region near the bottom wall. Despite the shorter time, the streamlines already indicate a flow structure of similar nature to that of the SMC discussed above, with three vortices spanning the liquid domain.

As time passes, the thin thermocapillary layer grows thicker until it spans the complete cell height, while the solid/liquid front advances through the cell, as shown at $\tau = 0.0171$. From this time onwards, the solid/liquid interface maintains a similar overall shape, with approximately the same inclination (greater than that observed with smaller Ma), until reaching the cold endwall. During this transient, the existing SMC flow develops an increasing number of vortices, whose location along the container length is often nearly steady. At some instant, however, this underlying structure begins to oscillate, producing a *hydrothermal travelling wave* (HTW). With this applied Ma, the solid volume is completely melted by $\tau_{\text{melt}} = 0.0870$ (510 s).

The HTW is characterised by the cyclic creation of vortices at the cold boundary where $\Theta = 0$ (i.e., at the solid/liquid interface or the cold wall) that travel towards the hot wall. The intensity of the travelling motion decays as they move inwards. In the vicinity of the hot boundary, the flow structure is essentially *standing*. Part of this can be seen in the last three snapshots of figure 6 at $\tau = 0.0341$, 0.0683, 0.1024. The instability mechanism responsible for generating HTWs in high Pr liquids was discussed by Smith (1986), and shown to involve a (cyclic) energy transfer from the base flow to the

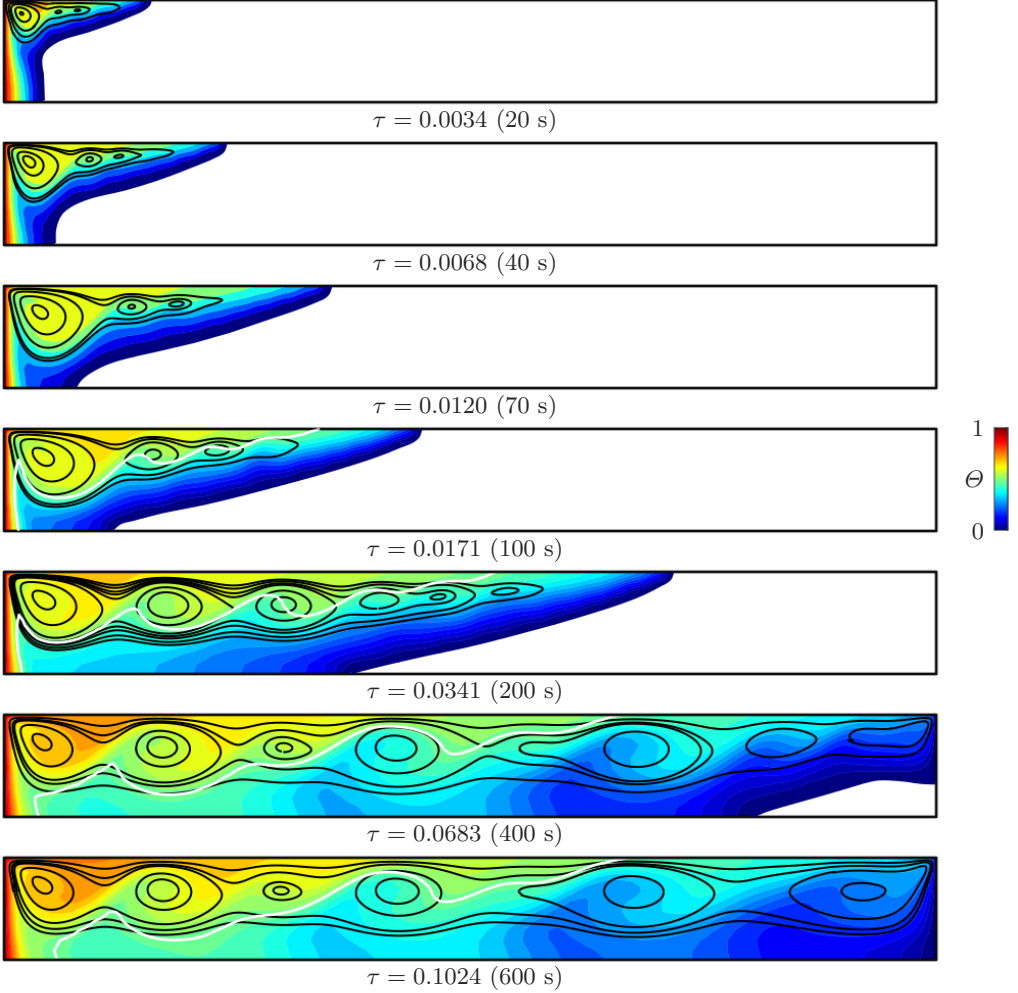


FIGURE 6. Snapshots (times indicated) showing the evolution of the PCM melting for $\Gamma = 12$ ($H = 1.875$ mm, $L = 22.5$ mm) and a (large) applied $\text{Ma} = 186224$ ($\text{Ste} = 0.271$, $\Delta T = 30$ K). The colourmap shows the temperature field with flow streamlines (black solid lines) and the $\Theta = 0.5$ isotherm (white line) superimposed. The solid volume is melted completely by $\tau_{\text{melt}} = 0.0870$ (510 s). During the process, the thermocapillary flow in the liquid phase (coloured) shows the *hydrothermal travelling wave* (HTW) oscillatory mode, characterised by the cyclic creation of vortices at the cold boundary $\Theta = 0$ (i.e., at the solid/liquid interface or the cold wall) that travel towards the hot wall. The intensity of the *travelling* vortices decays progressively as they penetrate inwards. In the vicinity of the hot boundary, the travelling velocity decreases and the flow structure remains essentially *standing*.

temperature disturbance, and vice versa; hot perturbations at the interface are cooled by an up flow from underneath and, conversely, cold perturbations are warmed by an associated down flow.

In order to understand the different features of the HTW mode, temperature profiles are measured at selected locations along the cell length at $\hat{y} = (2/3)\Gamma^{-1}$ as illustrated in figure 7. In panel (a), temperature profiles are shown at three points $\hat{x} = \Gamma^{-1}$ (black), $1/2$ (dark grey) and $1 - \Gamma^{-1}$ (light grey, labelled in the figure). By comparing to figure 5, the oscillatory nature of the thermocapillary flow is evident. Furthermore, two relevant

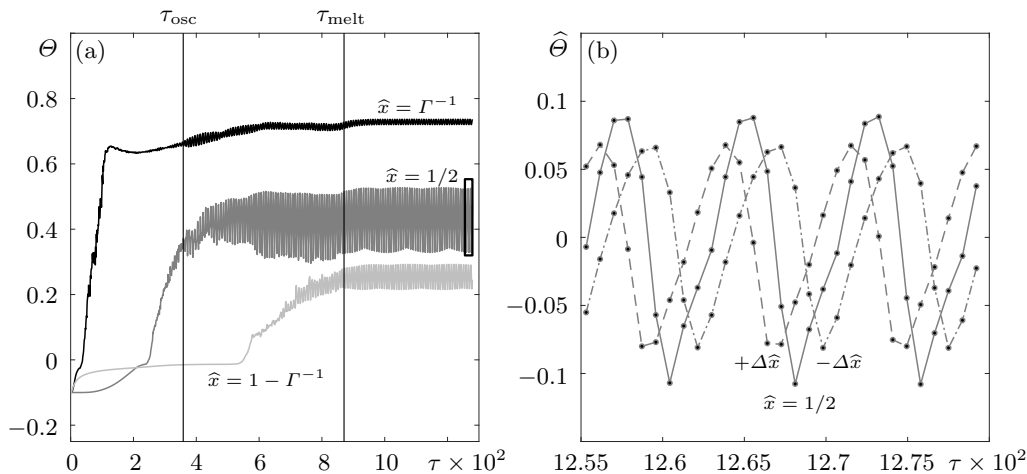


FIGURE 7. Time evolutions of the dimensionless temperature Θ at $\text{Ma} = 186224$ ($\text{Ste} = 0.271$, $\Delta T = 30$ K, as in figure 6), where the oscillatory HTW is found. (a) Temperatures Θ at three selected sounding points distributed along the cell length $\hat{x} = \Gamma^{-1}$ (black), $1/2$ (dark grey) and $1 - \Gamma^{-1}$ (light grey, labelled in the figure) at fixed vertical position $\hat{y} = (2/3)\Gamma^{-1}$. Two relevant times are indicated by vertical lines: appearance of the HTW τ_{osc} , melting completion τ_{melt} . (b) Temperature deviation $\hat{\Theta} = \Theta - \langle \Theta \rangle$ with respect to the average $\langle \Theta \rangle$ at $\hat{x} = 1/2$ (solid line) and $1/2 \pm \Delta\hat{x}$, $\Delta\hat{x} \simeq 0.04$ (dashed, dashed-dotted), showing the travelling nature of the oscillatory HTW mode.

times, indicated by vertical lines, can be inferred: the appearance of the HTW mode at τ_{osc} , revealed by the signal oscillation, and the completion of melting at τ_{melt} , revealed by the approach to a final HTW oscillatory mode solution.

By themselves, the temperature signals of panel (a) do not demonstrate the travelling nature of the HTW mode. To show this, we calculate the temperature deviation $\hat{\Theta} = \Theta - \langle \Theta \rangle$ with respect to the temporal average $\langle \Theta \rangle$ at $\hat{x} = 1/2$ (solid line) and two equidistant points $\hat{x} \pm \Delta\hat{x}$, $\Delta\hat{x} \simeq 0.04$ (dashed, dashed-dotted), shown in panel (b). The shifted times at which the maxima of the curves occur demonstrates that these waves travel from the cold to the hot side of the container. At the same time, the fact that the peaks are not exactly at the same value shows that they are not purely travelling but include some degree of time-independent spatial modulation as well (i.e., a standing or pulsating component).

A more detailed look at the HTW mode is provided by figure 8(a–f), which shows six snapshots (approximately) equally distributed in time over one oscillation period of the temperature deviation field $\hat{\Theta}$ (left) and associated flow streamlines (right). The temperature deviation shows the motion of (cold and hot) perturbations from the cold side and how they vanish as they approach the hot boundary. The streamlines, on the other hand, not only reveal the motion of the vortices from the cold side, but also certain degree of pulsating motion of the velocity field near the hot side, where the oscillatory mode becomes more of a standing wave. The wavenumber is estimated to be $kH \simeq 2$, consistent with the work of Smith & Davis (1983), which predicted $kH \rightarrow 2.47$ in the limit of $\text{Pr} \rightarrow \infty$. The simulations here capture the essentially two-dimensional behaviour of the HTW instability anticipated by these authors, who predicted a (small) propagation angle of 7.9° in the high Pr limit.

The evolution of the temperature field $\hat{\Theta}$ along $\hat{y} = (2/3)\Gamma^{-1}$ [indicated in panel (f) by the solid horizontal line] is shown in figure 8(g) over many oscillation periods. The

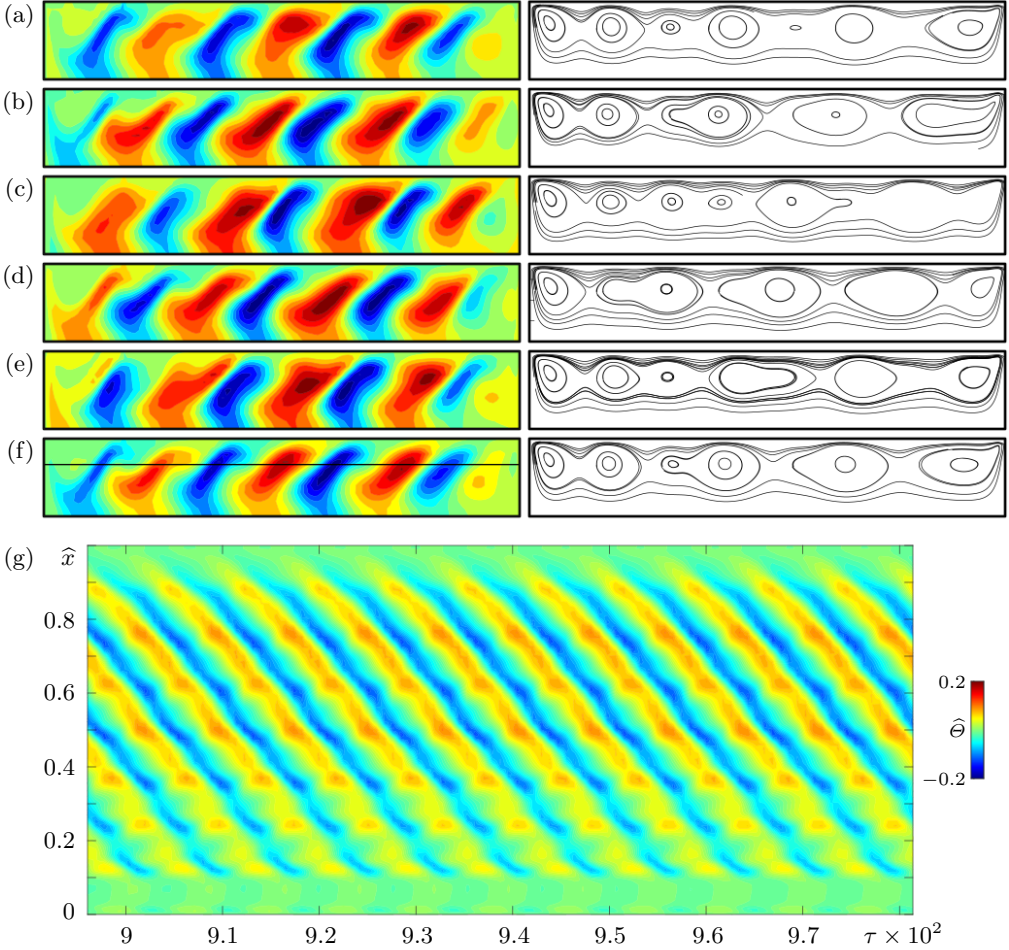


FIGURE 8. The HTW found at $\text{Ma} = 186224$ ($\text{Ste} = 0.271$, $\Delta T = 30$ K). (a–f) Temperature deviation $\hat{\Theta}$ (left panels) and flow streamlines (right panels) at equally spaced times over (approximately) one oscillation period; the time increment between panels is $\Delta\tau \simeq 1.7 \times 10^{-4}$ (1 s). (g) Time evolution of temperature deviation $\hat{\Theta}$ at the horizontal line $\hat{y} = (2/3)\Gamma^{-1}$ [indicated in panel (f)] for several oscillation periods. The colourmap scale given in (g) is preserved between panels.

travelling nature of the wave is clear. Furthermore, its mean velocity can be estimated by the slope of the maxima (or minima) in the space-time plot. A slight change in the slope of these maximal (or minimal) curves can be discerned from $\hat{x} = 1$ (cold wall) to 0 (hot wall) as the travelling wave becomes increasing more like a standing wave near the hot side.

It is informative to look at the characteristic frequency of the HTW obtained from a Fast Fourier Transform (FFT). In figure 9, (normalised) spectrograms calculated from the temperature deviation $\hat{\Theta}$ at $(\hat{x}, \hat{y}) = (1/2, (2/3)\Gamma^{-1})$ are shown for three different applied Marangoni numbers: (a) $\text{Ma} = 108630$, (b) 124149 and (c) 186224, corresponding to $\text{Ste} = 0.158, 0.180, 0.271$ and $\Delta T = 17.5, 20$ and 30 K, respectively.

In general, the spectral content of the HTW mode increases with the applied Ma . At (moderate) Ma [panel (a)], there is a single dominant spectral peak at the natural

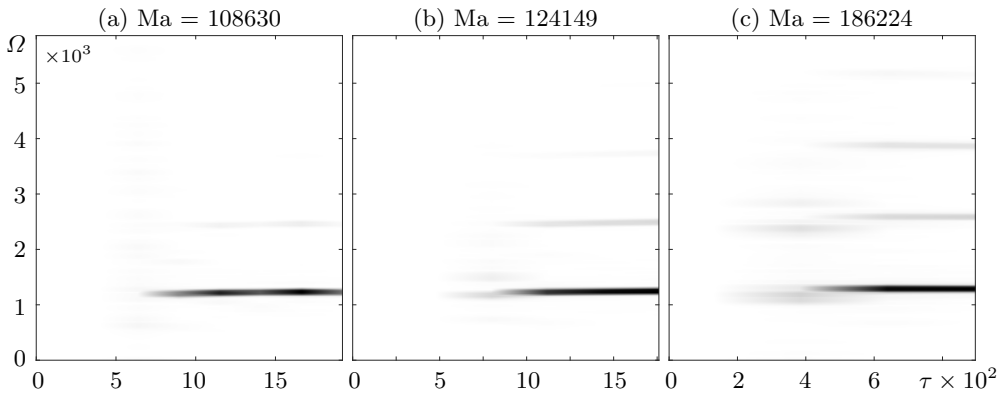


FIGURE 9. Spectrogram of the temperature deviation $\hat{\Theta} = \Theta - \langle \Theta \rangle$ ($\langle \Theta \rangle$ is the time average) measured at $(\hat{x}, \hat{y}) = (1/2, (2/3)\Gamma^{-1})$ for increasing Marangoni numbers in the HTW regime: (a) $\text{Ma} = 108630$, (b) 124149 and (c) 186224 . These values correspond to $\text{Ste} = 0.158, 0.180, 0.271$ and $\Delta T = 17.5, 20$ and 30 K. Frequencies are nondimensionalised with the thermal diffusion timescale (L^2/α).

frequency of the oscillation, $\Omega = f(L^2/\alpha) \simeq 1.17 \times 10^3$ ($f \simeq 0.2$ Hz, with units restored). Increasing the applied Ma does not substantially modify this frequency but does lead to more harmonic content in the signal. At $\text{Ma} = 124149$ [panel (b)], the frequencies $\Omega \simeq 1.17 \times 10^3, 2.34 \times 10^3$ ($f \simeq 0.2, 0.4$ Hz) are both relevant while in panel (c) at $\text{Ma} = 186224$, the third harmonic is significant as well. It can be expected that, for high enough Ma , chaotic thermocapillary flow can be found with a much broader spectral response. Here, it is evident the distinction mentioned above between the timescales of the melting process and the oscillatory modes. At $\text{Ma} = 186224$, for example, the (dimensional) oscillation period is in the order of 5 s, while it takes 510 s to observe the complete solid/liquid phase transition, showing a ratio of roughly 0.01.

The formation and propagation of HTW during solidification in large containers were recently analysed by Lappa (2018). The solidification was controlled by prescribing temperature ramps at the cold side of the container and the evolution of the oscillatory mode was traced during the process. Spectral analysis revealed the presence of a transition from the initial single-frequency HTW solution to a three-frequency mode with: (i) a first frequency similar to that of the initial HTW, (ii) a second frequency related to the temperature ramping, and (iii) a third frequency that was the difference of the other two. Our results have a simpler spectral profile since constant temperatures are applied at the boundaries. The spectra observed here, with the basic frequency of oscillation and higher harmonics, are more similar to the results of Shevtsova *et al.* (2003).

Finally, we plot the spectrogram (calculated at the completion of the phase change) against the applied Ma in figure 10(a). The increase in spectral content with applied Ma is apparent, while at lower values of Ma , there is no oscillatory behaviour at all. The vertical lines in panel (a), labelled as ‘a’, ‘b’ and ‘c’, refer to the Ma values of figure 9.

3.3. Onset of oscillatory convection

From the previous discussion, it is clear that there is a critical Marangoni number Ma_{cr} for the appearance of the HTW mode. However, in contrast to thermocapillary flow in a pure liquid phase, where the supercritical nature of the instability allows an accurate estimate of the threshold from the variation of the oscillation amplitude [see,

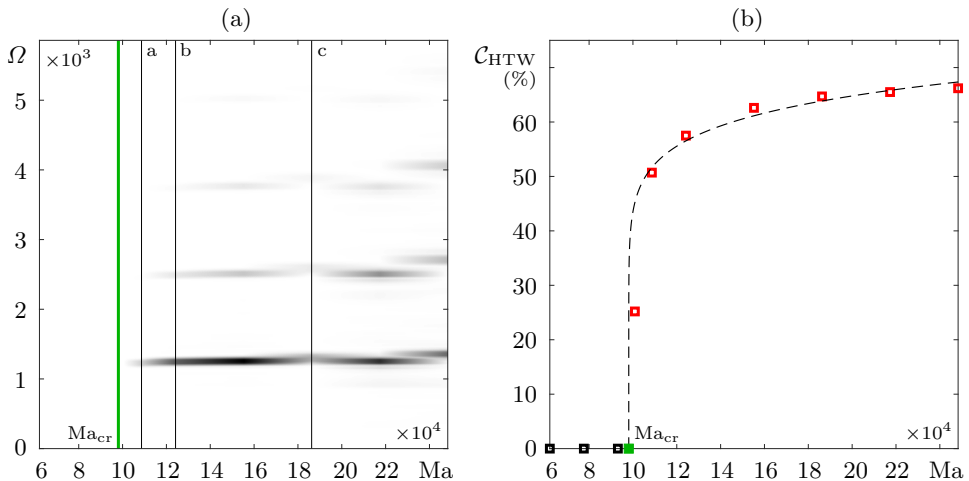


FIGURE 10. (a) Successive spectrograms of the temperature deviation $\hat{\Theta}$ measured at $(\hat{x}, \hat{y}) = (1/2, (2/3)\Gamma^{-1})$ at the completion of melting over a wide range of $Ma \in [62075, 248298]$ ($\Delta T \in [10, 40]$ K). The black vertical lines indicate the Ma of associated spectrograms shown in figure 9. (b) Contribution of the oscillatory HTW mode to the phase change \mathcal{C}_{HTW} (i.e., % of the total melting time with HTW) over the same range of Ma . Simulations are denoted by markers, which are colour-coded according to whether the thermocapillary flow is steady (black) or that of the HTW mode (red). The fit (dashed line) for these discrete measurements provides an estimate of the critical Ma (green marker) for the HTW mode, which is $Ma_{cr} = 97660$, corresponding to a $Ste_{cr} = 0.133$ and $\Delta T_{cr} = 15.73$ K. This threshold is labelled and indicated by the green vertical line in panel (a).

e.g., Preisser *et al.* (1983)], the gradual change of liquid volume due to the phase change process complicates this approach.

Generally, temperature measurements are as shown in figure 7, with long transient times needed to reach a quasisteady amplitude affected primarily by the slower evolution of the solid/liquid front during melting. To get around this problem, we propose to use the thermocapillary contribution of the HTW mode \mathcal{C}_{HTW} , defined as the total time that the oscillatory motion exists relative to the total melting time, which usually simplifies to

$$\mathcal{C}_{HTW} = \left(1 - \frac{\tau_{osc}}{\tau_{melt}}\right) \cdot 100 \text{ (in \%)} \quad (3.1)$$

In figure 10(b), the calculated \mathcal{C}_{HTW} values are plotted against the associated Ma . The markers denoting simulations are colour-coded according to whether the flow regime is steady (black) or that of the HTW mode (red). A fit of these values (dashed line) provides an estimate of the critical Ma (in green, also marked in panel (a) by a vertical green line) for the HTW mode. For $\Gamma = 12$, it is found to be

$$Ma_{cr} = 97660, \quad (3.2)$$

corresponding to $Ste_{cr} = 0.133$ and a critical temperature difference $\Delta T_{cr} = 15.73$ K.

4. Thermocapillary flows during the phase change in small aspect ratio containers

The phase change is now analysed in small aspect ratio containers. Again, qualitatively similar results are obtained for $\Gamma \lesssim 4$. We select $\Gamma = 2.25$ as a representative case to

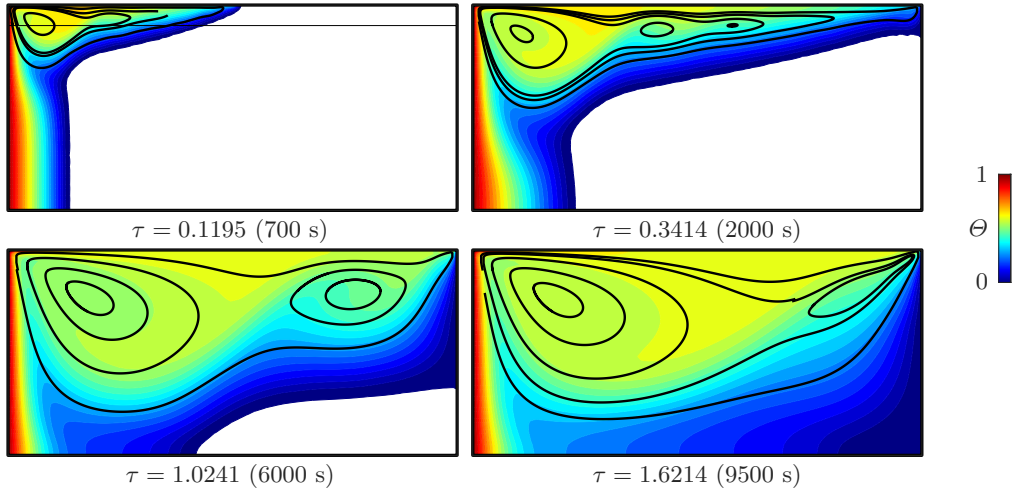


FIGURE 11. Snapshots (times indicated) showing the evolution of the PCM melting for $\Gamma = 2.25$ ($H = 10$ mm, $L = 22.5$ mm) and a (moderate) applied $\text{Ma} = 62075$ ($\text{Ste} = 0.090$, $\Delta T = 10$ K). The colourmap shows the temperature field with flow streamlines (black solid lines) superimposed. The solid volume is melted completely by $\tau_{\text{melt}} = 1.5677$ (9185 s). During the process, the thermocapillary flow in the liquid phase (coloured) exhibits a transition from a small-scale SMC to a large-scale *steady vortical structure* (SVS). As the phase change progresses, an initial series of vortices along the thin liquid layer near the free surface (where the effective local aspect ratio is large) transforms into a SVS flow with one strong vortex near the hot side and a weaker one near the cold side. The horizontal line at $\tau = 0.1195$ indicates the selected cut $\hat{y} = (9/10)\Gamma^{-1}$ used for the temperature profiles shown in figure 12.

illustrate the different dynamics that can occur during the phase transition depending on the applied Ma . As for large aspect ratio containers, the associated thermocapillary flow can be either steady or oscillatory, with each treated in separate sections below.

4.1. *Steady flow regime: from small-scale SMC states to large-scale steady vortical structures (SVS)*

In figure 11, four snapshots show the time evolution of the PCM phase change for $\Gamma = 2.25$ ($H = 10$ mm, $L = 22.5$ mm) and a (moderate) applied $\text{Ma} = 62075$ ($\text{Ste} = 0.090$, $\Delta T = 10$ K). The colourmap shows the temperature field between $\Theta = 0$ ($T = T_M$, dark blue) and $\Theta = 1$ ($T = T_M + 10$ K, dark red), with flow streamlines (black solid lines) superimposed.

At the early times of the phase change, heat transport is dominated by thermal diffusion. As soon as the solid/liquid front separates enough from the hot boundary, the thermocapillary effect drives convection in an initially thin region (compared to H) near the free surface. The melting process is locally enhanced, which accelerates the progression of the solid/liquid front near the liquid-air boundary, as shown at $\tau = 0.1195$. The effective aspect ratio within this layer is generally larger than Γ and thus, a flow structure reminiscent of a small-scale SMC is observed within the layer; this solution is typical of larger aspect ratio containers (see §3, for details). The streamlines included at $\tau = 0.3415$ illustrate this structure, which is characterised by a series of vortices that spread from the hot to the cold boundary. During this time, the cold boundary is essentially determined by the advancing solid/liquid front. The liquid near the bottom wall, on the other hand, indicates a phase change driven mainly by thermal diffusion.

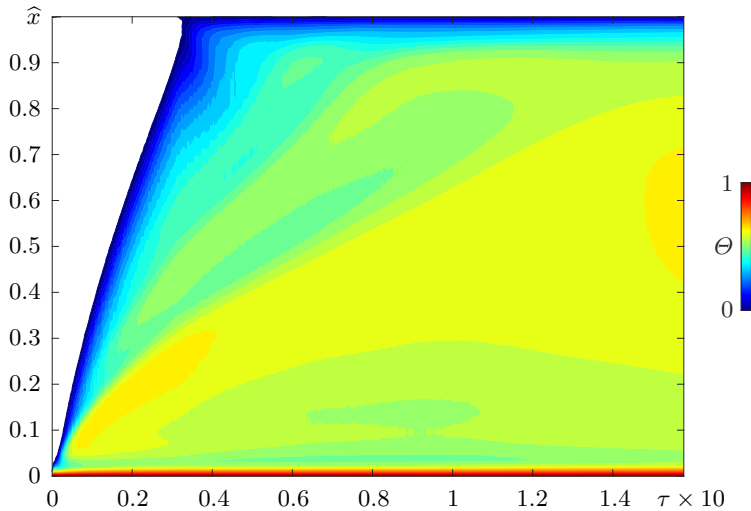


FIGURE 12. Evolution of the temperature profile at $\hat{y} = (9/10)\Gamma^{-1}$ for the complete solid/liquid transition illustrated in figure 11. The colourmap shows the temperature field and demonstrates the steady nature of the vortical structure over the complete melting process.

This is evident from the local temperature field, which shows (vertical) isotherms parallel to the lateral endwalls.

As this layer evolves, the solid/liquid front reaches the cold lateral boundary and the liquid phase depth near this boundary increases with time. This means that the effective aspect ratio for the thermocapillary flow slowly decreases and the vortices move towards the cold endwall. At some point, the smaller vortex near this boundary is absorbed by its neighbour, which reduces the number of vortices by one. This process is repeated until a final configuration of two vortices is reached, as shown at $\tau = 1.0241$. The vortical structure selected in the final configuration depends on the cell aspect ratio (Bergeon *et al.* 1998); the limiting case of one single vortex would be observed for reduced aspect ratios (Zebib *et al.* 1985; Carpenter & Homsy 1990).

At the completion of melting, which occurs by $\tau = 1.5677$ (9185 s), the flow contains two vortices of different intensity, similar to the structure discussed by Peltier & Biringen (1993), with the main vortex biased towards the hot wall, consistent as well with Carpenter & Homsy (1990). For this applied Ma , the flow remains steady and temperature oscillations are not observed. This is demonstrated in figure 12, where the time evolution of the temperature profile along the $\hat{y} = (9/10)\Gamma^{-1}$ line (marked by a solid line at $\tau = 0.1195$ in figure 11) is shown.

Not only is the steady nature of the melting process clear from the temperature field, but the quasisteady evolution of the flow structure is also evident. The initial vortex that is (nearly) centred along this line progressively occupies the left half of the cell, while the smaller vortices that form along with the SMC slowly disappear near the cold boundary and are absorbed by their neighbours. In short, the thermocapillary flow evolves from a small-scale (compared to container dimensions) SMC to a large-scale SVS.

Finally, as for $\Gamma \gg 1$, the steady nature of this thermocapillary flow becomes unstable at a certain Ma , where it gives way to an oscillatory mode. The features of this mode are presented and analysed below.

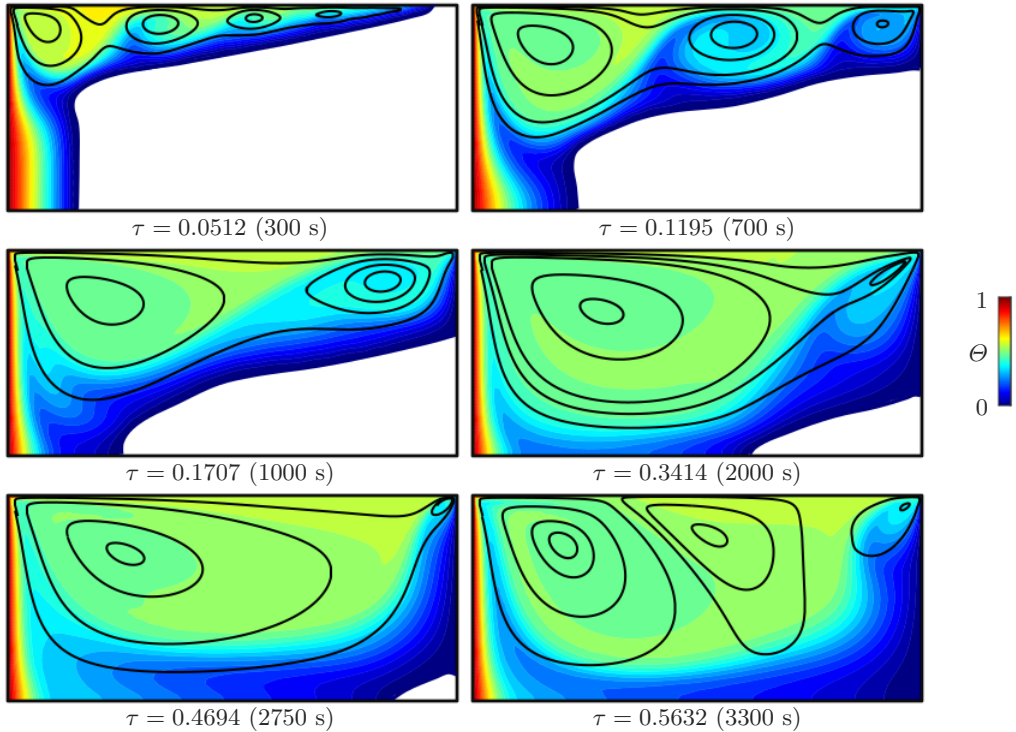


FIGURE 13. Snapshots (times indicated) showing the evolution of the PCM melting for $\Gamma = 2.25$ ($H = 10$ mm, $L = 22.5$ mm) and a (large) applied $\text{Ma} = 186224$ ($\text{Ste} = 0.271$, $\Delta T = 30$ K). The colourmap shows the temperature field with flow streamlines (black solid lines) superimposed. The solid is melted completely by $\tau_{\text{melt}} = 0.5461$ (3200 s). During the process, the thermocapillary flow in the liquid phase (coloured) is that of an *oscillatory standing wave* (OSW) mode, characterised by a periodic pulsation where the intensity of the two principal vortices cycles back and forth.

4.2. Oscillatory flow regime: the oscillatory standing wave (OSW)

In figure 13, snapshots at selected times show the evolution of the phase change for $\Gamma = 2.25$ ($H = 10$ mm, $L = 22.5$ mm) and a (large) applied $\text{Ma} = 186224$ ($\text{Ste} = 0.271$, $\Delta T = 30$ K). The colourmap shows the temperature field between $\Theta = 0$ ($T = T_M$, dark blue) and $\Theta = 1$ ($T = T_M + 30$ K, dark red), with flow streamlines (black solid lines) superimposed.

The progression of the phase change is fairly similar to that of §4.1 with the total time of the melting reduced as expected for an applied Ma that is three times larger. The flow in the liquid initially shows two regions: the thermocapillary-dominated region near the free surface, and the thermal diffusion-dominated region near the bottom wall. As the applied Ma is increased, the localised SMC contains four vortices (see the temperature field and streamlines at $\tau = 0.0512$), one more than the three vortices shown at $\tau = 0.3414$ in figure 11 for a similar solid/liquid interface location. As time passes, however, the associated thermocapillary flow does not have the simple structure of two asymmetric vortices but a more complex evolving flow structure, as illustrated at $\tau = 0.3414$, 0.4694, 0.5632.

To confirm the oscillatory (more generally, unsteady) nature of the flow, the temperature field (upper row) and the associated spectrograms (lower row) at different points of the container are shown in figure 14. For consistency with §3, these measurement points

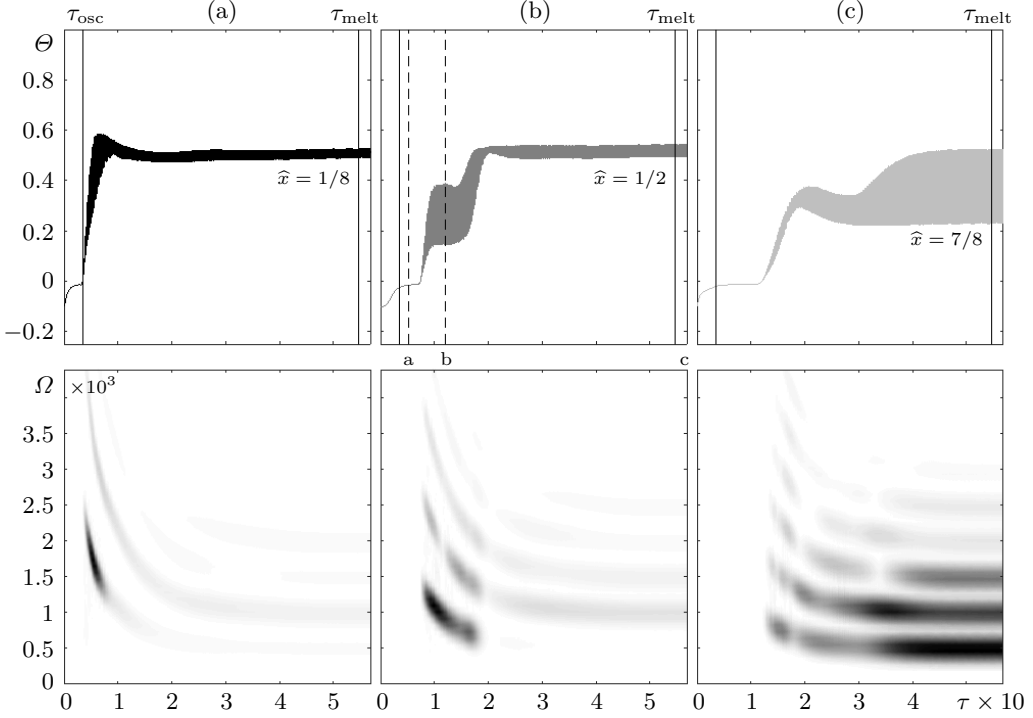


FIGURE 14. Evolution of the dimensionless temperature Θ for $\text{Ma} = 186224$ ($\Delta T = 30$ K, as in figure 13), where the OSW is found. In the upper row of panels, temperatures are shown at (a) $\hat{x} = 1/8$ (black), (b) $1/2$ (dark grey) and (c) $7/8$ (light grey, labelled in the panels) with the fixed vertical position $\hat{y} = (2/3)\Gamma^{-1}$. Two relevant times are indicated by vertical solid lines: appearance of the OSW τ_{osc} , end of melting τ_{melt} , while dashed lines mark the selected times for the oscillation periods shown in figure 15 (labelled between rows). The lower row of panels shows associated spectrograms for the temperature deviation $\hat{\Theta} = \Theta - \langle \Theta \rangle$.

are chosen along the line $\hat{y} = (2/3)\Gamma^{-1}$ at three different locations: (a) $\hat{x} = 1/8$ (black), (b) $1/2$ (dark grey) and (c) $7/8$ (light grey, labelled in the panels). Two important times are indicated by solid vertical lines: the appearance of the OSW at τ_{osc} and τ_{melt} .

Aside from the oscillatory behaviour, which is evident in these profiles, there is a significant difference compared to the results at large aspect ratios that can be seen in the associated spectrograms. For $\Gamma = 12$, the spectrograms of figure 9 show a single dominant frequency for the HTW mode that is *nearly independent* on the applied Ma or the evolution of the solid/liquid front; this is consistent with the idea that it is the (nearly constant) cold boundary region that is selecting the HTW frequency. For the OSW mode in small aspect ratio containers, in contrast, there is a notable variation of the principal frequency over time and in space. This mode has more complicated spectral behaviour due to the interaction of the different regions near the free surface and near the bottom of the container and the progressive loss of vortices from the underlying SMC type of structure. The dominant (dimensionless) frequency changes substantially during the melting process, from $\Omega \simeq 2.34 \times 10^3$ ($f \simeq 0.4$ Hz) at the appearance of oscillatory motion to $\Omega \simeq 0.41 \times 10^3$ ($f \simeq 0.07$ Hz) when melting finishes. *We note again that the timescale of the oscillatory flow, which ranges between 2–14 s, is substantially smaller compared to the melting time of 3200 s.*

The spectral content of the temperature signals varies significantly along the length of

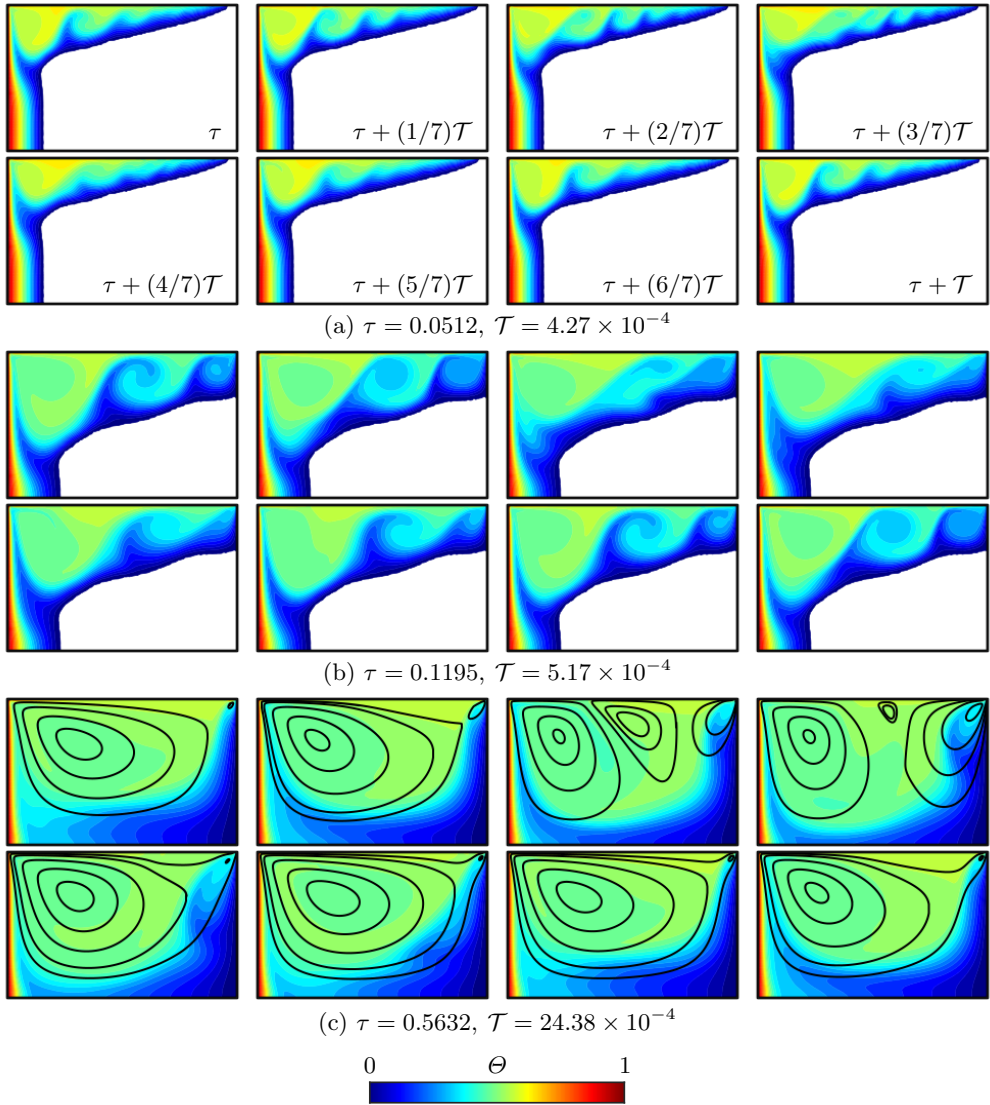


FIGURE 15. Details of the OSW mode during the phase change in a container of $\Gamma = 2.25$ subjected to $\text{Ma} = 186224$ ($\text{Ste} = 0.271$, $\Delta T = 30$ K). Temperature fields are shown at selected times (equally spaced) over an oscillation period at (a) $\tau = 0.0512$ (300 s), (b) 0.1195 (700 s) and (c) 0.5632 (3300 s). Streamlines are superimposed in the final set of snapshots.

the container too. When melting completes, the oscillations are relatively weak near the hot side, with stronger oscillations concentrated near the cold side. In fact, compared to figure 9(c), where the same $\text{Ma} = 186224$ was applied, the spectral content of the signal is much richer here with the dominant frequency of the OSW mode roughly half that of the HTW mode. They are clearly distinct instabilities.

This complex scenario can be better understood by focusing on selected oscillation periods throughout the melting process. In figure 15, equally distributed snapshots are shown during one period of oscillation centred at the times (a) $\tau = 0.0512$ (300 s), (b) 0.1195 (700 s) and (c) 0.5632 (3300 s). The corresponding oscillation frequencies (periods

are labelled in the panels) are $\Omega \simeq 2.34 \times 10^3$, 1.93×10^3 , 0.41×10^3 ($f \simeq 0.4$, 0.33 , 0.07 Hz), respectively.

At $\tau = 0.0512$, the oscillatory mode features five pulsating vortices that spread along the thin liquid layer near the interface. The progressive melting reduces the number of oscillating vortices in the structure and the associated frequency decreases gradually. At $\tau = 0.1195$, the mode is characterised by the pulsation of three vortices, whose effect on the solid/liquid front is evident in its curvature.

As time passes, this three-vortex structure is reduced to two asymmetric pulsating vortices. At this point, the cycle involves the generation of a counter flow near the free surface, which is indicated by the appearance in the streamlines of a new vortex. The oscillatory motion observed at the completion of melting is analogous to the oscillatory mode described by Peltier & Biringen (1993).

The instability mechanism can be described following Peltier & Biringen (1993). The clockwise sense of rotation of the largest vortex allows a cool stream of liquid to be siphoned away from the cold boundary (either the solid/liquid front or the endwall) along the bottom of the container. Near the hot wall, this stream is redirected upwards, creating a cool tongue that interacts with the thermocapillary surface. The cool tongue creates a large thermal gradient near the hot wall that causes the primary convection cell to compress towards this boundary and strengthen [see first and second panels of figure 15(c)]. In turn, the shear forces from this primary vortex near its cold side weaken, and a secondary vortex with the same sense of rotation appears. Between these, an additional tertiary vortex with the opposite sense of rotation appears, supported by the shear between the primary and secondary cells and the weak local temperature gradient of the interface [in an adverse sense with respect to the rotation of this cell; see third panel of (c)].

The primary and secondary vortices strengthen up to a certain point [fourth panel of (c)], where two different mechanisms come into play to recover the initial single cell structure. First, in the absence of sufficient reinforcement of liquid from the cold wall, the cool tongue near the hot wall warms up and its effect on the surface diminishes; this retraction of the cool finger can be seen between the third and fifth panels in (c). Secondly, the increased strength of the primary vortex draws hot liquid from the hot wall. The secondary vortex, on the other hand, draws cold fluid from the cold boundary and ejects it upwards towards the thermocapillary surface [see the fourth snapshot in (c)]. The surface is thus cooled locally, which reduces the driving force that maintains the secondary cell. Through this process, the secondary cell brings about its own extinction, which favours the expansion of the primary vortex and a return to the original state.

This oscillation relies on the interaction between the sensitivity of the surface to the cooling effect provided by the cold tongue and the extent to which the cool stream that is expelled from the cold boundary can influence the cold tongue. It thus makes sense that the oscillation period increases as the driving force (via the cold tongue) is effectively reduced with increasing vortex size, which explains the general observation in the spectrograms of decreasing frequencies during the phase change.

One may also expect that this oscillation can disappear during the melting process if the (nearly) horizontal solid/liquid front near the cold side moves down far enough in the cell. In other words, when the primary vortex is large enough for its influence on the thermocapillary surface to diminish. We posit that this transition from OSW to SVS was observed in container of $\Gamma = 1.5$ ($H = 15$ mm) in the present simulations, with further details given below.

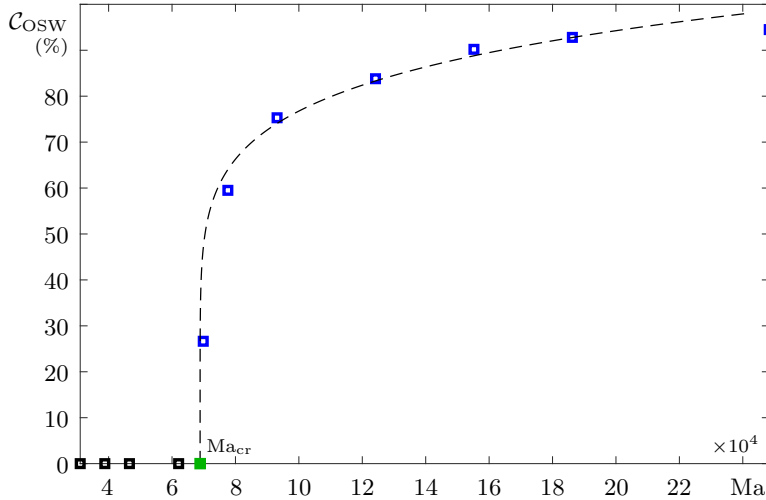


FIGURE 16. Contribution of the OSW mode to the phase change \mathcal{C}_{OSW} (i.e., % of the total melting time) for a wide range of $\text{Ma} \in [31038, 248298]$ ($\Delta T \in [5, 40]$ K). Simulations are denoted by markers, which are colour-coded according to whether the thermocapillary flow is steady (black) or that of the OSW mode (blue). The fit (dashed line) for these measurements provides an estimate of the critical Ma (green marker) for the OSW mode, which is $\text{Ma}_{\text{cr}} = 68852$, corresponding to $\text{Ste}_{\text{cr}} = 0.100$ and $\Delta T_{\text{cr}} = 11.09$ K.

4.3. Onset of oscillatory convection

Again, it is clear from these results that there is a Ma_{cr} for the appearance of the OSW mode. As in §3.3, we locate this transition by using the thermocapillary contribution of the OSW mode \mathcal{C}_{OSW} , defined as the total time that the oscillatory motion exists relative to the total melting time, which usually simplifies to

$$\mathcal{C}_{\text{OSW}} = \left(1 - \frac{\tau_{\text{osc}}}{\tau_{\text{melt}}}\right) \cdot 100 \text{ (in \%)} \quad (4.1)$$

In figure 16, \mathcal{C}_{OSW} is plotted against Ma . Simulations are colour-coded according to whether the flow is steady (black) or that of the OSW mode (blue). The fit (dashed line) to these measured values provides an estimate of the critical value (in green) for the OSW mode. For $\Gamma = 2.25$, it is found to be

$$\text{Ma}_{\text{cr}} = 68852, \quad (4.2)$$

corresponding to $\text{Ste}_{\text{cr}} = 0.100$ and a critical temperature difference of $\Delta T_{\text{cr}} = 11.09$ K.

Thus, not only does the evolution of the thermocapillary flow depend on the aspect ratio, but the onset values are different. We now discuss the combined effect of Ma and Γ .

5. Overview of the thermocapillary flow regimes during the PCM phase change

The analyses of §3 and §4 have examined the different thermocapillary flows that are observed in the liquid phase of a PCM with a free surface during its melting process in microgravity.

In large aspect ratio containers, the thermocapillary flow at small Ma is initially

characterised by a large vortex that spans the liquid domain, with the typical SRF structure (Sen & Davis 1982; Strani *et al.* 1983). Increasing Ma destabilizes this large vortex to a series of vortices appearing in a SMC. By increasing Ma even more, this SMC undergoes a transition to a periodic HTW, which is characterised by the cyclic creation of vortices near the cold side that travel inwards to the hot side. The time when this HTW mode first appears during the phase change depends on the applied Ma . During the time these travelling waves exist, they affect heat transport and contribute to the phase change process. By calculating their contribution to the phase change, one can estimate the critical Ma .

In small aspect ratio containers, on the other hand, the thermocapillary flow at small to moderate Ma is initially characterised by the transition from a small-scale SMC, located in a thin layer near the free surface where the local aspect ratio is larger than Γ , to a large-scale SVS. Upon increasing Ma , a complex oscillatory mode appears, characterised by the pulsation of the underlying vortical structure. In fact, as this structure evolves during the phase change by reducing the number of its vortices, the frequency of the oscillation also decreases. We refer to this mode as OSW, which is qualitatively different than the HTW. Again, the associated critical Ma can be estimated by plotting the percentage of time that it exists relative to the total melting time.

To complete these analyses, sets of simulations were performed over a wide range of $Ma \in (6000, 248298]$ ($\Delta T \in (1, 40]$ K) in rectangular cells of ten different Γ , covering the interval $\Gamma \in [1.5, 22.8]$, which includes small, intermediate and large values. Figure 17 summarises the different thermocapillary flow regimes observed during the phase change in terms of (a) Ma and Γ , and (b) ΔT and H (for a fixed $L = 22.5$ mm). The simulation results are colour-coded according to whether the observed flow was steady (black), an HTW mode (red) or an OSW mode (blue). The critical boundary for oscillatory flow is marked by a solid green line.

This figure illustrates the distinction between large and small aspect ratio containers already discussed, and suggests how the thermocapillary flow during the phase change changes between them. In the transition regime, simulations were performed with a rectangular cell of $\Gamma = 5.29$ ($H = 4.25$ mm, $L = 22.5$ mm). At low Ma , the flow was steady and a small-scale SMC appears. Upon increasing Ma , this vortical structure becomes unstable to the HTW mode. During the phase change, HTWs usually appear for a limited duration during the melting and disappear again so that the final thermocapillary flow is a SVS. At certain Ma , the evolution of the flow becomes completely steady, with the initial small-scale SMC developing directly into a large-scale SVS. This steady regime, however, persists only over a small range of Ma and becomes unstable to the OSW mode at larger values.

An explanation for this transition regime can be taken from the work of Peltier & Birneng (1993), where thermocapillary flows were analysed in rectangular two-dimensional domains with aspect ratios between 2.3 and 3.8 for a $Pr = 7.78$ fluid. Figure 3 of that reference is especially relevant, where the instability map in terms of Γ and Ma is presented. Regions showing a double-valued critical onset (zero amplitude curves) are obtained so that, for fixed Γ , transitions from steady to oscillatory and back to steady solutions are observed with increasing Ma (or vice versa).

In the present work, since the melting front constitutes a moving boundary for the liquid phase, this transition can be understood as a change in effective aspect ratio of the liquid. We note that regardless of Γ , the initial effective aspect ratio tends to zero. In large containers, this effective aspect ratio rapidly takes a large value, and thus, the preferred flow is the HTW mode. In small aspect ratio containers, the effective ratio is

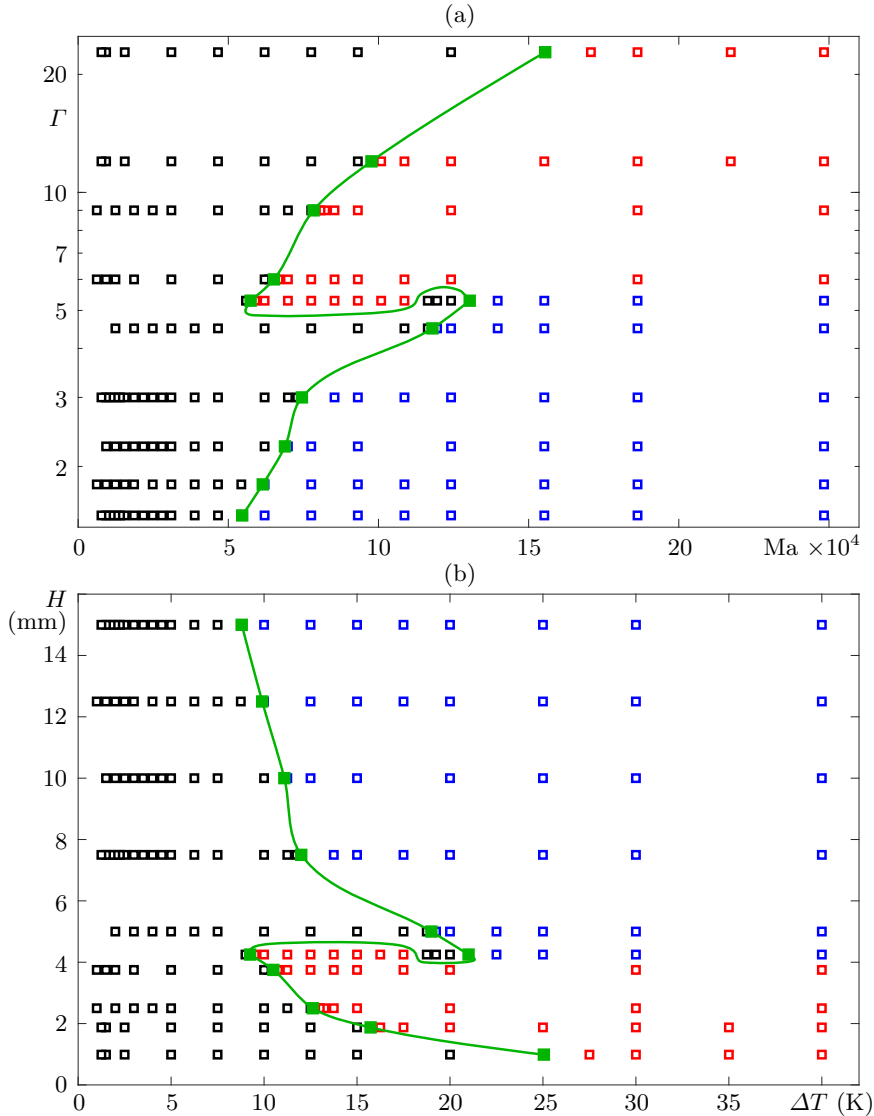


FIGURE 17. Overview of the type of thermocapillary flow observed during the PCM phase change as a function of (a) Ma and Γ , and (b) ΔT (in K) and H (in mm); recall that $L = 22.5$ mm. Distinct modes are marked in different colours: steady flow (black), HTW (red) and OSW (blue). The critical boundary for oscillatory flow is marked by a solid green line. Note the logarithmic scale used in the vertical axis of panel (a).

more limited and takes a maximum value where we consistently observe the selection of SMC states, then later decreases towards Γ .

For intermediate containers, the effective ratio evolves in a more complex manner, potentially exhibiting various maxima and minima during the process. One may imagine that the instantaneous value of the effective aspect ratio selects the preferred oscillatory mode (either OSW or HTW) with the stability of the system changing as it passes a critical value. This picture is consistent with the results obtained for $\Gamma = 5.29$. At low Ma , the relative evolution between the conductive-dominated and thermocapillary-

dominated regions of the domain selects the SMC first. This steady structure is later destabilised to the HTW mode, which persists within a finite range of Ma . For increasing values, a last transition from an SVS to an OSW mode is observed, again as the effective aspect ratio transitions across the corresponding critical values.

In the smallest aspect ratio considered, $\Gamma = 1.5$, the thermocapillary flow also undergoes two transitions from steady to oscillatory, and from oscillatory back to steady. This was anticipated in §4.2 when discussing the sensitivity of the OSW mode to the influence of the cold tongue on the thermocapillary surface, and can be explained in a similar way. In this case, the effective aspect ratio crosses the same (OSW) instability boundary twice.

Finally, it is worth clarifying that we have referred to any phase change transition as *oscillatory* if it involved *oscillatory flows at any lapse during melting*. This is also behind the term “oscillatory mode contribution” to the phase change and is consistent with the overall enhancement of thermocapillary convection on heat transport that was demonstrated by the works of Ezquerro *et al.* (2019, 2020); Salgado Sanchez *et al.* (2020), and that is apparent in the present results.

6. Conclusions

A detailed numerical investigation of thermocapillary flows during the melting of Phase Change Materials in microgravity is presented.

The phase change transition is modelled using an enthalpy-porosity-based formulation of the Navier-Stokes equations (Voller *et al.* 1987), and analysed for the high Prandtl number organic paraffin n-octadecane ($Pr = 52.53$) due to its relevance to recent microgravity experiments (Ezquerro *et al.* 2019, 2020; Salgado Sanchez *et al.* 2020). The PCM is enclosed in a rectangular (two-dimensional) container with isothermal conditions along the left and right lateral walls. The progressive evolution of the solid/liquid front during the melting process leaves a free surface along which a temperature variation exists. The associated gradient of surface tension drives thermocapillary convection in the liquid phase. In this manuscript, the different thermocapillary flows found during the melting process are analysed, following the usual division according to aspect ratio.

In large Γ containers, analysed in §3, the thermocapillary flow at small Ma is initially characterised by a large vortex that spans the liquid domain, with the classical features of a *steady return flow*. Increasing Ma destabilises this large vortex, which is replaced by a series of vortices in a *steady multicellular structure* (SMC). By further increasing Ma , this SMC state undergoes a transition to a *hydrothermal travelling wave* (HTW), which is characterised by the periodic creation of vortices near the cold side that travel inwards to the hot side. The appearance of this HTW mode during the phase change depends on the applied Ma , and these travelling waves exist during a certain portion of the total melting time, during which they *contribute* to the phase change process. By calculating this contribution, one can estimate the critical Ma for the appearance of the HTW mode.

In small aspect ratio containers, analysed in §4, the thermocapillary flow at small to moderate Ma is initially characterised by the transition from a small-scale SMC state, which develops in a thin layer near the free surface where the local aspect ratio is larger than Γ , to a large-scale *steady vortical structure* (SVS). By increasing Ma , a complex oscillatory mode appears, which is characterised by the pulsation of the underlying vortical structure. As this structure evolves during the phase change by reducing the number of its vortices, the natural frequency of the oscillation also decreases. We refer to this state as an *oscillatory standing wave* (OSW) mode due to its clear qualitative differences with respect to the HTW. Again, plotting the associated oscillatory contribution provides an estimate of the critical Ma for the OSW mode.

Finally, in §5, results are summarised in terms of Ma and Γ , delineating the different thermocapillary flow regimes observed during the phase change process, and establishing the stability boundaries for the HTW and OSW modes. The transition regime separating them is also analysed, with the choice of $\Gamma \simeq 5.3$. At low Ma , the flow is steady, with the appearance of a small-scale SMC. With increasing Ma , this vortical structure becomes unstable to the HTW mode. During the phase change, HTW modes typically appear for a limited portion of the melting time and disappear again prior to the emergence of the final thermocapillary flow state, which is again an SVS mode. At a certain Ma , the phase change becomes fully (quasi)steady with the initial small-scale SMC developing directly into a large-scale SVS state. This behaviour occurs only over a small range of Ma and becomes unstable to the OSW mode at larger values.

Several aspects of the results described here suggest themselves for further investigation, an effort that will be undertaken separately. First, further simulations will be performed to investigate the transition region in more detail and accurately locate the instability boundaries, and to determine if a suitable definition of the effective (transient) aspect ratio for the liquid phase during the melting process can be used to understand them. On the experimental side, we are currently developing a ground-based setup that will allow us to make systematic measurements of the phase change process in different organic paraffins, including n-octadecane, under the presence of a controlled thermocapillary interface. It is expected that these experiments will confirm some of the behaviour found in the simulations presented here and allow for a refinement of the model. An extension of the numerical model to three dimensions is also planned. Finally, these investigations would most benefit from a comparison with (future) microgravity experiments covering the entire PCM melting cycle. Such experiments could confirm the existence of the thermocapillary flows described here and, in particular, investigate the transition between HTW and OSW modes.

Declaration of interest. The authors report no conflict of interest.

Acknowledgement. This work was supported by the Spanish User Support and Operations Centre (E-USOC) and the Escuela Técnica Superior de Ingeniería Aeronáutica y del Espacio at the Universidad Politécnica de Madrid. We thank the research group of Ciencias y Operaciones Aeroespaciales for their invaluable efforts and, in particular, professor J. Porter for the helpful discussions and the English revision of the manuscript.

REFERENCES

- AGYENIM, F., EAMES, P. & SMYTH, M. 2009 A comparison of heat transfer enhancement in a medium temperature thermal energy storage heat exchanger using fins. *Solar Energy* **83**, 1509–1520.
- ALAWADHI, E. M. 2008 Thermal analysis of a building brick containing phase change material. *Energy and Buildings* **40**, 351–357.
- ATAL, A., WANG, Y., HARSHA, M. & SENGUPTA, S. 2016 Effect of porosity of conducting matrix on a phase change energy storage device. *Journal of Heat and Mass Transfer* **93**, 9–16.
- BERGEON, A., HENRY, D., BENHADID, H. & TUCKERMAN, L. S. 1998 Marangoni convection in binary mixtures with Soret effect. *Journal of Fluid Mechanics* **375**, 143–177.
- BRICE, J. C. 1986 *Crystal growth*. Blackie and Son.
- CABEZA, L.F., MEHLING, H., HIEBLER, S. & ZIEGLER, F. 2002 Heat transfer enhancement in water when used as PCM in thermal energy storage. *Applied Thermal Engineering* **22**, 1141–1151.

- CAMP, D. W. 1977 National technical paper 1071-1080. *NASA Technical Reports* .
- CARPENTER, B. M. & HOMSY, G. M. 1990 High Marangoni number convection in a square cavity: Part II. *Physics of Fluids* **2**, 137–149.
- CHUB, C.H. & WUEST, W. 1979 Experiments on the transition from the steady to the oscillatory marangoni-convection of a floating zone under reduced gravity effect. *Acta Astronautica* **6**, 1073–1082.
- CODINA, R. 1993 A discontinuity-capturing crosswind-dissipation for the finite element solution of the convection-diffusion equation. *Computer Methods in Applied Mechanics and Engineering* **110**, 325–342.
- CREEL, R. 2007 Apollo rover lessons learned: Applying thermal control experiences on apollo lunar rover project to rovers for future space exploration.
- DHAIDAN, N. S. & KHODADADI, J. M. 2015 Melting and convection of phase change materials in different shape containers: A review. *Renewable and Sustainable Energy Reviews* **43**, 449–477.
- DHAIDAN, N. S., KHODADADI, J. M., AL-HATTAB, T. A. & AL-MASHAT, S. M. 2013 Experimental and numerical investigation of melting of NePCM inside an annular container under a constant heat flux including the effect of eccentricity. *International Journal of Heat and Mass Transfer* **67**, 455–468.
- EGOLF, P. W. & MANZ, H. 1994 Theory and modeling of phase change materials with and without mushy regions. *International Journal of Heat and Mass Transfer* **37**, 2917–2924.
- ERHARD, P. & DAVIS, S. H. 1991 Nonisothermal spreading of liquid drops on horizontal planes. *Journal of Fluid Mechanics* **229**, 365.
- ETTOUNEY, H. M., ALATIQUI, I., AL-SHALI, M. & AL-ALI, S. A. 2004 Heat transfer enhancement by metal screens and metal spheres in phase change energy storage systems. *Renewable Energy* **29**, 841–860.
- EZQUERRO, J. M., BELLO, A., SALGADO SANCHEZ, P., LAVERON-SIMAVILLA, A. & LAPUERTA, V. 2019 The Thermocapillary Effects in Phase Change Materials in Microgravity experiment: design, preparation and execution of a parabolic flight experiment. *Acta Astronautica* **162**, 185–196.
- EZQUERRO, J. M., SALGADO SANCHEZ, P., BELLO, A., RODRIGUEZ, J., LAPUERTA, V. & LAVERON-SIMAVILLA, A. 2020 Experimental evidence of thermocapillarity in Phase Change Materials in microgravity: measuring the effect of marangoni convection in solid/liquid phase transitions. *International Communications of Heat and Mass Transfer* **113**, 104529.
- FERNANDES, D., PITIE, F., CACERES, G. & BAEYENS, J. 2012 Thermal energy storage: “how previous findings determine current research priorities”. *Energy* **39**, 246–257.
- GAU, C. & VISKANTA, R. 1986 Melting and solidification of a pure metal on a vertical wall. *Transactions of the ASME* **108**, 174–181.
- GIANGI, M., STELLA, F., LEONARDI, E. & DE VAHL DAVIS, G. 2002 A numerical study of solidification in the presence of a free surface under microgravity conditions. *Numerical Heat Transfer Part A: Applications* **57**, 457–473.
- HARARI, I. & HUGHES, T. 1992 What are C and h?: Inequalities for the analysis and design of finite element methods. *Computer Methods in Applied Mechanics and Engineering* **97**, 157–192.
- HO, C. J. & GAOE, J. Y. 2009 Preparation and thermophysical properties of nanoparticle-in-paraffin emulsion as phase change material. *International Communications in Heat and Mass Transfer* **36**, 467–470.
- HOSSEINIZADEH, S. F., DARZI, A. A. RABIENATAJ & TAN, F. L. 2012 Numerical investigations of unconstrained melting of nano-enhanced phase change material (NEPCM) inside a spherical container. *International Journal of Thermal Sciences* **51**, 77–83.
- HUMPHRIES, W. R. & GRIGGS, E. I. 1977 A design handbook for phase change thermal control and energy storage devices. *Renewable and Sustainable Energy Reviews* .
- KHODADADI, J. M. & ZHANG, Y. 2001 Effects of buoyancy-driven convection on melting within spherical containers. *International Journal of Heat and Mass Transfer* **44**, 1605–1618.
- KUHLMANN, H. C. & ALBENSOEDER, S. 2008 Three-dimensional flow instabilities in a thermocapillary-driven cavity. *Physical Review E* **77**, 036303.
- LANDAU, L. D. & LIFSHITZ, E. M. 1987 *Fluid Mechanics*. Pergamon books Ltd.

- LANE, G. A. 1983 *Solar Heat Storage: Latent Heat Material - Volume 1: Background and Scientific Principles*.
- LAPPA, M. 2018 On the formation and propagation of hydrothermal waves in liquid layers with phase change. *Computers and Fluids* **172**, 741–760.
- LIDE, D. R. 2014 *Handbook of Chemistry and Physics*.
- MADRUGA, S. & MENDOZA, C. 2017a Enhancement of heat transfer rate on phase change materials with thermocapillary flows. *European Physical Journal Special Topics* **226**, 1169–1176.
- MADRUGA, S. & MENDOZA, C. 2017b Heat transfer performance and melting dynamic of a phase change material subjected to thermocapillary effects. *International Journal of Heat and Mass Transfer* **109**, 501–510.
- MILLS, K. C., KEENE, B. J., BROOKS, R. F. & SHIRALI, A. 1998 Marangoni effects in welding. *Philosophical Transactions of the Royal Society of London A* **356**, 911–925.
- MONTANERO, J. M., FERRERO, C. & SHEVTSOVA, V. M. 2008 Experimental study of the free surface deformation due to thermal convection in liquid bridges. *Experiments and Fluids* **45**, 1087–1101.
- PELTIER, L. J. & BIRINGEN, S. 1993 Time-dependent thermocapillary convection in a rectangular cavity: numerical results for a moderate Prandtl number fluid. *Journal of Fluid Mechanics* **257**, 339–357.
- PREISSER, F., SCHWABE, D. & SCHARMANN, A. 1983 Steady and oscillatory thermocapillary convection in liquid columns with free cylindrical surface. *Journal of Fluid Mechanics* **126**, 545–567.
- ROY, S. K. & SENGUPTA, S. 1990 Gravity-assisted melting in a spherical enclosure: effects of natural convection. *International Journal of Heat and Mass Transfer* **33**, 1135–1147.
- SALGADO SANCHEZ, P., EZQUERRO, J. M., PORTER, J., FERNANDEZ, J. & TINAO, I. 2020 Effect of thermocapillary convection on the melting of Phase Change Materials in microgravity: experiments and simulations. *International Journal of Heat and Mass Transfer* **154**, 119717.
- SAMANTA, S. K. 1987 *Interdisciplinary issues in materials processing and manufacturing*. New York: American Society of Mechanical Engineers.
- SCHWABE, D. & SCHARMANN, A. 1979 Some evidence for the existence and magnitude of a critical marangoni number for the onset of oscillatory flow in crystal growth melts. *Journal of Crystal Growth* **46**, 125–131.
- SEN, A. K. & DAVIS, S. H. 1982 Steady thermocapillary flows in two-dimensional slots. *Journal of Fluid Mechanics* **121**, 163–186.
- SHEVTSOVA, V., MIALDUN, A., FERRERA, C., ERMAKOV, M., CABEZAS, M. G. & MONTANERO, J. M. 2008 Subcritical and oscillatory dynamic surface deformations in non-cylindrical liquid bridges. *Fluid Dynamics and Material Processing* **4**, 43–54.
- SHEVTSOVA, V., NEPOMNYASHCHY, A. & LEGROS, J. C. 2003 Thermocapillary-buoyancy convection in a shallow cavity heated from the side. *Physical Review E* **67**, 066308.
- SHOKOUHMAND, H. & KAMKARI, B. 2013 Experimental investigation on melting heat transfer characteristics of lauric acid in a rectangular thermal storage unit. *Experimental Thermal and Fluid Science* **50**, 201–212.
- SIRIGNANO, W. A. & GLASSMAN, I. 1970 Flame spreading above liquid fuels: Surface tension driven flows. *Combustion Science and Technology* **1**, 307.
- SMITH, M. K. 1986 Instability mechanisms in dynamic thermocapillary liquid layers. *Physics of Fluids* **29**, 3182.
- SMITH, M. K. & DAVIS, S. H. 1983 Instabilities of dynamic thermocapillary liquid layers. Part 1. Convective instabilities. *Journal of Fluid Mechanics* **132**, 119–144.
- STRANI, M., PIVA, R. & GRAZIANI, G. 1983 Thermocapillary convection in a rectangular cavity: asymptotic theory and numerical simulation. *Journal of Fluid Mechanics* **130**, 347–376.
- SUBRAMANIAN, R. S. 1992 *The Motion of bubbles and drops in reduced gravity*. IN *Transport Processes in bubbles, Drops and particles*. Hemisphere.
- SWANSON, T. D. & BIRUR, G. C. 2003 Nasa thermal control technologies for robotic spacecraft. *Applied Thermal Engineering* .
- VELEZ, C., KHAYET, M. & ORTIZ, J. M. 2015 Temperature-dependent thermal properties

of solid/liquid phase change even-numbered n-alkanes: n-hexadecane, n-octadecane and n-eicosane. *Applied Energy* **143**, 383–394.

VOLLER, V. R., CROSS, M. & MARKATOS, N. C. 1987 An enthalpy method for convection/diffusion phase change. *International Journal for Numerical Methods in Engineering* **24**, 271–284.

WANG, Y., AMIRI, A. & VAFAI, K. 1999 An experimental investigation of the melting process in a rectangular enclosure. *International Journal of Heat and Mass Transfer* **42**, 3659–3672.

WILLIAMS, J. P., PAIGE, D. A., GREENHAGEN, B. T. & SEFTON-NASH, E. 2017 The global surface temperatures of the moon as measured by the diviner lunar radiometer experiment. *Icarus* **283**, 300–325.

XIAOHONG, G., XIANGE, S., MIAO, Z. & DAWEI, T. 2012 Influence of void ratio on thermal stress of pcm canister for heat pipe receiver. *Applied Thermal Engineering* **94**, 615–621.

ZEBIB, A., HOMSAY, G. M. & MEIBURG, E. 1985 High Marangoni number convection in a square cavity. *Physics of Fluids* **28**, 3467–3476.